

# Diagonal control using the SVD and the Jacobian Matrix

Dehaeze Thomas

January 11, 2021

# Contents

<b>1</b>	<b>Gravimeter - Simscape Model</b>	<b>3</b>
1.1	Introduction	3
1.2	Gravimeter Model - Parameters	3
1.3	System Identification	4
1.4	Decoupling using the Jacobian	7
1.5	Decoupling using the SVD	8
1.6	Verification of the decoupling using the “Gershgorin Radii”	10
1.7	Verification of the decoupling using the “Relative Gain Array”	11
1.8	Obtained Decoupled Plants	11
1.9	Diagonal Controller	11
1.10	Closed-Loop system Performances	15
1.11	Robustness to a change of actuator position	17
1.12	Choice of the reference frame for Jacobian decoupling	18
1.12.1	Decoupling of the mass matrix	19
1.12.2	Decoupling of the stiffness matrix	20
1.12.3	Combined decoupling of the mass and stiffness matrices	21
1.12.4	Conclusion	22
1.13	SVD decoupling performances	23
<b>2</b>	<b>Stewart Platform - Simscape Model</b>	<b>25</b>
2.1	Simscape Model - Parameters	26
2.2	Identification of the plant	27
2.3	Decoupling using the Jacobian	29
2.4	Decoupling using the SVD	30
2.5	Verification of the decoupling using the “Gershgorin Radii”	31
2.6	Verification of the decoupling using the “Relative Gain Array”	32
2.7	Obtained Decoupled Plants	33
2.8	Diagonal Controller	33
2.9	Closed-Loop system Performances	36

In this document, the use of the Jacobian matrix and the Singular Value Decomposition to render a physical plant diagonal dominant is studied. Then, a diagonal controller is used.

These two methods are tested on two plants:

- In Section 1 on a 3-DoF gravimeter
- In Section 2 on a 6-DoF Stewart platform

# 1 Gravimeter - Simscape Model

## 1.1 Introduction

In this part, diagonal control using both the SVD and the Jacobian matrices are applied on a gravimeter model:

- Section 1.2: the model is described and its parameters are defined.
- Section 1.3: the plant dynamics from the actuators to the sensors is computed from a Simscape model.
- Section 1.4: the plant is decoupled using the Jacobian matrices.
- Section 1.5: the Singular Value Decomposition is performed on a real approximation of the plant transfer matrix and further use to decouple the system.
- Section 1.6: the effectiveness of the decoupling is computed using the Gershorin radii
- Section 1.7: the effectiveness of the decoupling is computed using the Relative Gain Array
- Section 1.8: the obtained decoupled plants are compared
- Section 1.9: the diagonal controller is developed
- Section 1.10: the obtained closed-loop performances for the two methods are compared
- Section 1.11: the robustness to a change of actuator position is evaluated
- Section 1.12: the choice of the reference frame for the evaluation of the Jacobian is discussed
- Section 1.13: the decoupling performances of SVD is evaluated for a low damped and an highly damped system

## 1.2 Gravimeter Model - Parameters

The model of the gravimeter is schematically shown in Figure 1.1.

The parameters used for the simulation are the following:

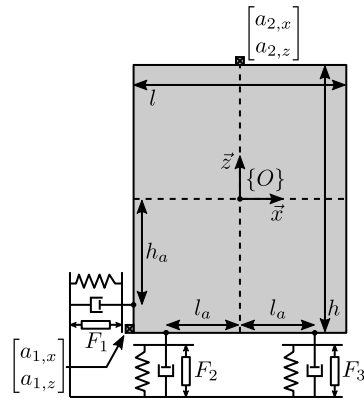


Figure 1.1: Model of the gravimeter

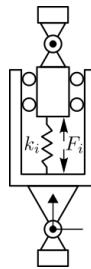


Figure 1.2: Model of the struts

```

Matlab
l = 1.0; % Length of the mass [m]
h = 1.7; % Height of the mass [m]

la = l/2; % Position of Act. [m]
ha = h/2; % Position of Act. [m]

m = 400; % Mass [kg]
I = 115; % Inertia [kg m^2]

k = 15e3; % Actuator Stiffness [N/m]
c = 2e1; % Actuator Damping [N/(m/s)]

deq = 0.2; % Length of the actuators [m]

g = 0; % Gravity [m/s^2]

```

### 1.3 System Identification

```

Matlab
%% Name of the Simulink File
mdl = 'gravimeter';

%% Input/Output definition
clear io; io_i = 1;
io(io_i) = linio([mdl, '/F1'], 1, 'openinput'); io_i = io_i + 1;
io(io_i) = linio([mdl, '/F2'], 1, 'openinput'); io_i = io_i + 1;
io(io_i) = linio([mdl, '/F3'], 1, 'openinput'); io_i = io_i + 1;
io(io_i) = linio([mdl, '/Acc_side'], 1, 'openoutput'); io_i = io_i + 1;
io(io_i) = linio([mdl, '/Acc_side'], 2, 'openoutput'); io_i = io_i + 1;
io(io_i) = linio([mdl, '/Acc_top'], 1, 'openoutput'); io_i = io_i + 1;

```

```
io(io_i) = linio([mdl, '/Acc_top'], 2, 'openoutput'); io_i = io_i + 1;
G = linearize(mdl, io);
G.InputName = {'F1', 'F2', 'F3'};
G.OutputName = {'Ax1', 'Ay1', 'Ax2', 'Ay2'};
```

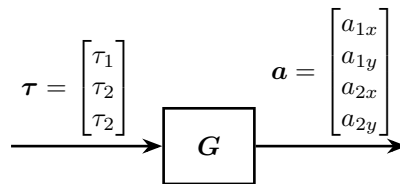
The inputs and outputs of the plant are shown in Figure 1.3.

More precisely there are three inputs (the three actuator forces):

$$\boldsymbol{\tau} = \begin{bmatrix} \tau_1 \\ \tau_2 \\ \tau_2 \end{bmatrix} \quad (1.1)$$

And 4 outputs (the two 2-DoF accelerometers):

$$\mathbf{a} = \begin{bmatrix} a_{1x} \\ a_{1y} \\ a_{2x} \\ a_{2y} \end{bmatrix} \quad (1.2)$$



**Figure 1.3:** Schematic of the gravimeter plant

We can check the poles of the plant:

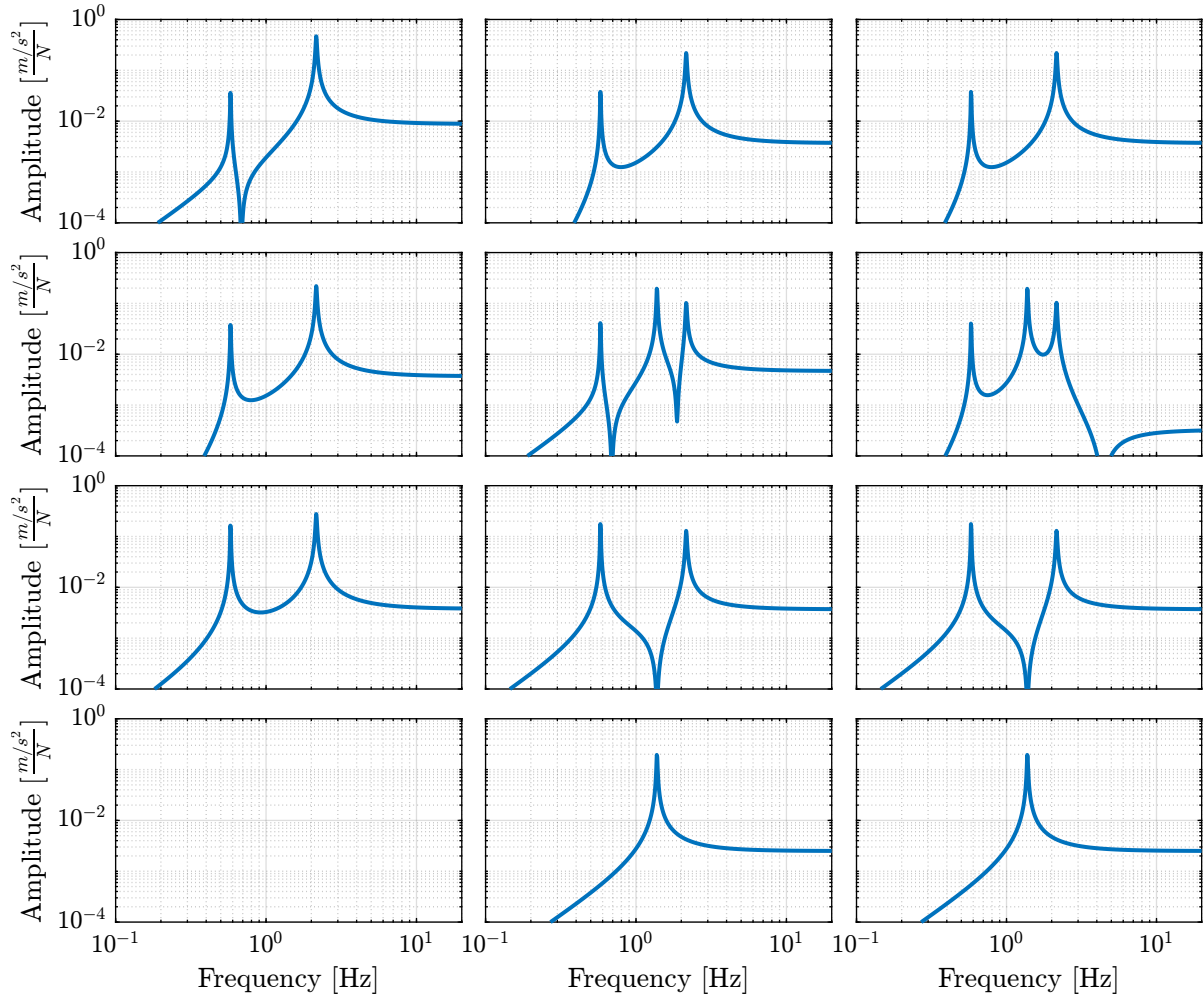
```
-0.12243+13.551i
-0.12243-13.551i
-0.05+8.6601i
-0.05-8.6601i
-0.0088785+3.6493i
-0.0088785-3.6493i
```

As expected, the plant has 6 states (2 translations + 1 rotation)

```
Matlab
size(G)
```

```
Results
State-space model with 4 outputs, 3 inputs, and 6 states.
```

The bode plot of all elements of the plant are shown in Figure 1.4.



**Figure 1.4:** Open Loop Transfer Function from 3 Actuators to 4 Accelerometers

## 1.4 Decoupling using the Jacobian

Consider the control architecture shown in Figure 1.5.

The Jacobian matrix  $J_\tau$  is used to transform forces applied by the three actuators into forces/torques applied on the gravimeter at its center of mass:

$$\begin{bmatrix} \tau_1 \\ \tau_2 \\ \tau_3 \end{bmatrix} = J_\tau^{-T} \begin{bmatrix} F_x \\ F_y \\ M_z \end{bmatrix} \quad (1.3)$$

The Jacobian matrix  $J_a$  is used to compute the vertical acceleration, horizontal acceleration and rotational acceleration of the mass with respect to its center of mass:

$$\begin{bmatrix} a_x \\ a_y \\ a_{R_z} \end{bmatrix} = J_a^{-1} \begin{bmatrix} a_{x1} \\ a_{y1} \\ a_{x2} \\ a_{y2} \end{bmatrix} \quad (1.4)$$

We thus define a new plant as defined in Figure 1.5.

$$\mathbf{G}_x(s) = J_a^{-1} \mathbf{G}(s) J_\tau^{-T}$$

$\mathbf{G}_x(s)$  correspond to the  $3 \times 3$  transfer function matrix from forces and torques applied to the gravimeter at its center of mass to the absolute acceleration of the gravimeter's center of mass (Figure 1.5).

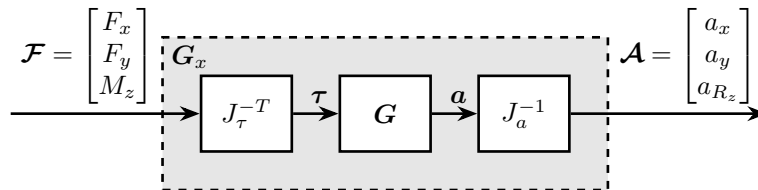


Figure 1.5: Decoupled plant  $\mathbf{G}_x$  using the Jacobian matrix  $J$

The Jacobian corresponding to the sensors and actuators are defined below:

```

Matlab
Ja = [1 0 -h/2
      0 1 1/2
      1 0 h/2
      0 1 0];

Jt = [1 0 -ha
      0 1 la
      0 1 -la];

```

And the plant  $\mathbf{G}_x$  is computed:

```

Matlab
Gx = pinv(Ja)*G*pinv(Jt');
Gx.InputName = {'Fx', 'Fy', 'Mz'};
Gx.OutputName = {'Dx', 'Dy', 'Rz'};

```

```
size(Gx)
State-space model with 3 outputs, 3 inputs, and 6 states.
```

Results

The diagonal and off-diagonal elements of  $G_x$  are shown in Figure 1.6.

It is shown at the system is:

- decoupled at high frequency thanks to a diagonal mass matrix (the Jacobian being evaluated at the center of mass of the payload)
- coupled at low frequency due to the non-diagonal terms in the stiffness matrix, especially the term corresponding to a coupling between a force in the x direction to a rotation around z (due to the torque applied by the stiffness 1).

The choice of the frame in this the Jacobian is evaluated is discussed in Section 1.12.

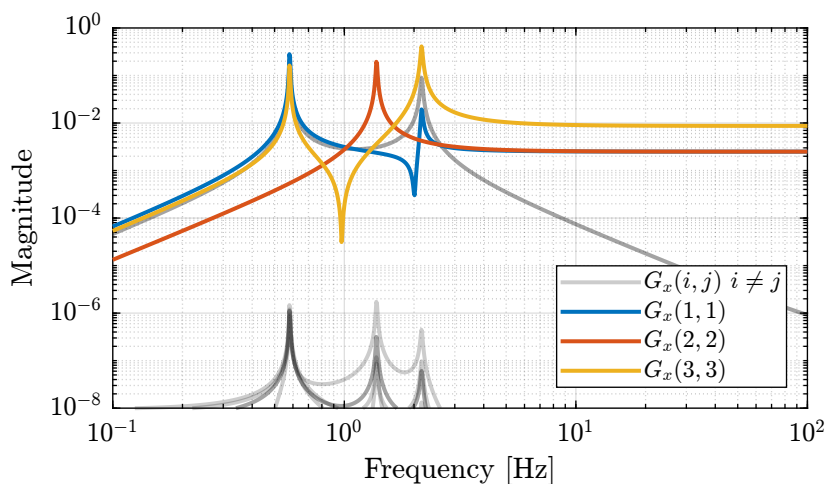


Figure 1.6: Diagonal and off-diagonal elements of  $G_x$

## 1.5 Decoupling using the SVD

In order to decouple the plant using the SVD, first a real approximation of the plant transfer function matrix as the crossover frequency is required.

Let's compute a real approximation of the complex matrix  $H_1$  which corresponds to the the transfer function  $G(j\omega_c)$  from forces applied by the actuators to the measured acceleration of the top platform evaluated at the frequency  $\omega_c$ .

```
wc = 2*pi*10; % Decoupling frequency [rad/s]
H1 = evalfr(G, j*wc);
```

Matlab



The real approximation is computed as follows:

```
Matlab
D = pinv(real(H1'*H1));
H1 = pinv(D*real(H1'*diag(exp(j*angle(diag(H1*D*H1.'))/2)))));
```

**Table 1.1:** Real approximate of  $G$  at the decoupling frequency  $\omega_c$

0.0092	-0.0039	0.0039
-0.0039	0.0048	0.00028
-0.004	0.0038	-0.0038
8.4e-09	0.0025	0.0025

Now, the Singular Value Decomposition of  $H_1$  is performed:

$$H_1 = U\Sigma V^H$$

```
Matlab
[U,S,V] = svd(H1);
```

**Table 1.2:**  $U$  matrix

-0.78	0.26	-0.53	-0.2
0.4	0.61	-0.04	-0.68
0.48	-0.14	-0.85	0.2
0.03	0.73	0.06	0.68

**Table 1.3:**  $V$  matrix

-0.79	0.11	-0.6
0.51	0.67	-0.54
-0.35	0.73	0.59

The obtained matrices  $U$  and  $V$  are used to decouple the system as shown in Figure 1.7.

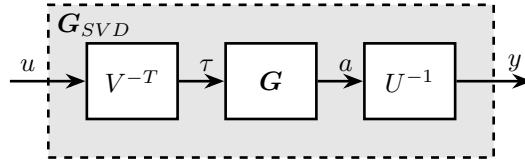
The decoupled plant is then:

$$\mathbf{G}_{SVD}(s) = U^{-1}\mathbf{G}(s)V^{-H}$$

```
Matlab
Gsvd = inv(U)*G*inv(V');
```

```
Results
size(Gsvd)
State-space model with 4 outputs, 3 inputs, and 6 states.
```

The 4th output (corresponding to the null singular value) is discarded, and we only keep the  $3 \times 3$  plant:

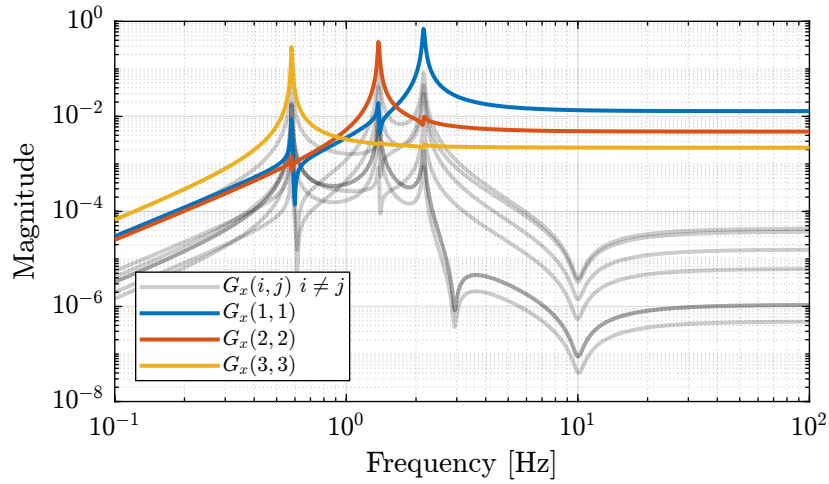


**Figure 1.7:** Decoupled plant  $G_{SVD}$  using the Singular Value Decomposition

```
Gsvd = Gsvd(1:3, 1:3);
```

Matlab

The diagonal and off-diagonal elements of the “SVD” plant are shown in Figure 1.8.



**Figure 1.8:** Diagonal and off-diagonal elements of  $G_{svd}$

## 1.6 Verification of the decoupling using the “Gershgorin Radii”

The “Gershgorin Radii” is computed for the coupled plant  $G(s)$ , for the “Jacobian plant”  $G_x(s)$  and the “SVD Decoupled Plant”  $G_{SVD}(s)$ :

The “Gershgorin Radii” of a matrix  $S$  is defined by:

$$\zeta_i(j\omega) = \frac{\sum_{j \neq i} |S_{ij}(j\omega)|}{|S_{ii}(j\omega)|}$$

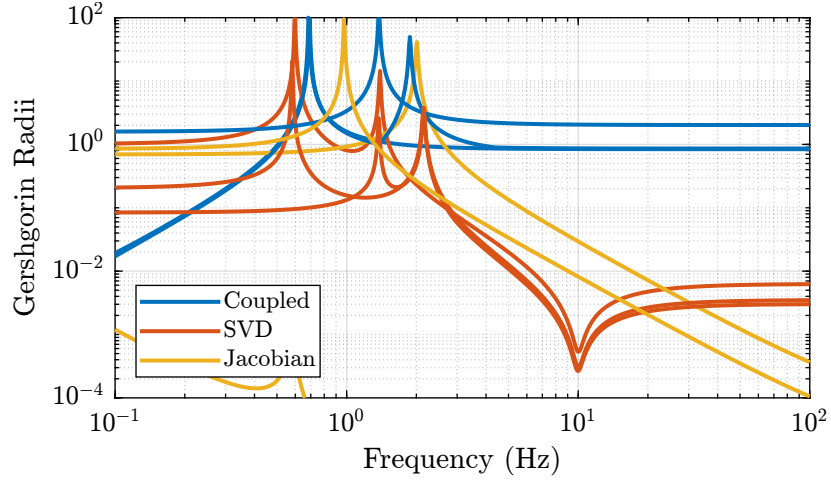


Figure 1.9: Gershgorin Radii of the Coupled and Decoupled plants

## 1.7 Verification of the decoupling using the “Relative Gain Array”

The relative gain array (RGA) is defined as:

$$\Lambda(G(s)) = G(s) \times (G(s)^{-1})^T \quad (1.5)$$

where  $\times$  denotes an element by element multiplication and  $G(s)$  is an  $n \times n$  square transfer matrix.

The obtained RGA elements are shown in Figure 1.10.

The RGA-number is also a measure of diagonal dominance:

$$\text{RGA-number} = \|\Lambda(G) - I\|_{\text{sum}} \quad (1.6)$$

## 1.8 Obtained Decoupled Plants

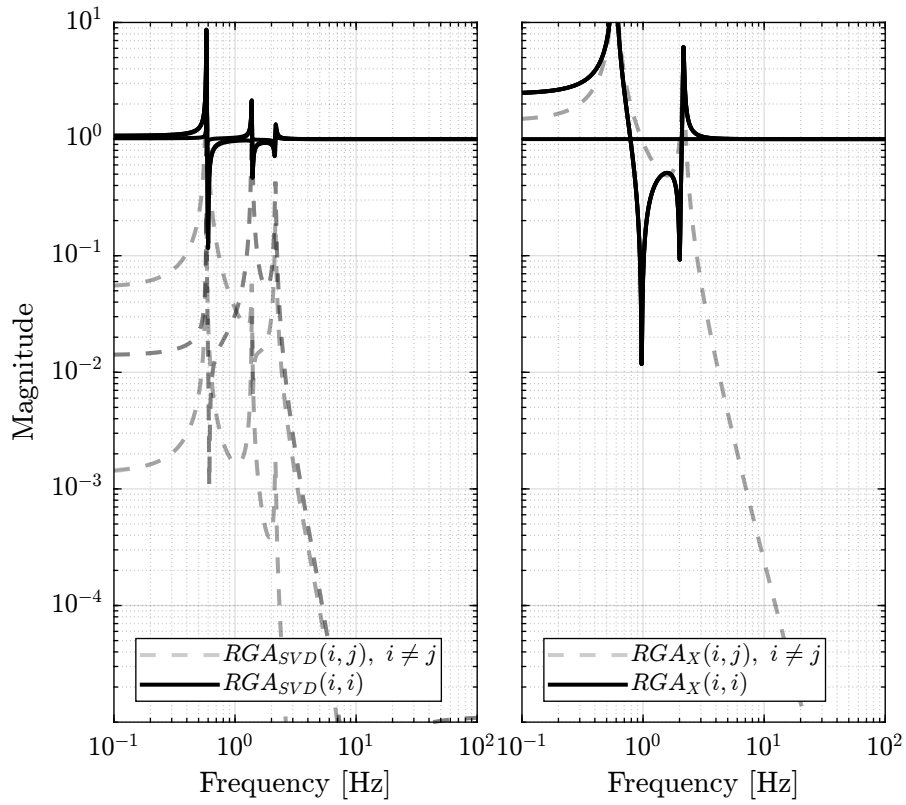
The bode plot of the diagonal and off-diagonal elements of  $G_{SVD}$  are shown in Figure 1.12.

Similarly, the bode plots of the diagonal elements and off-diagonal elements of the decoupled plant  $G_x(s)$  using the Jacobian are shown in Figure 1.13.

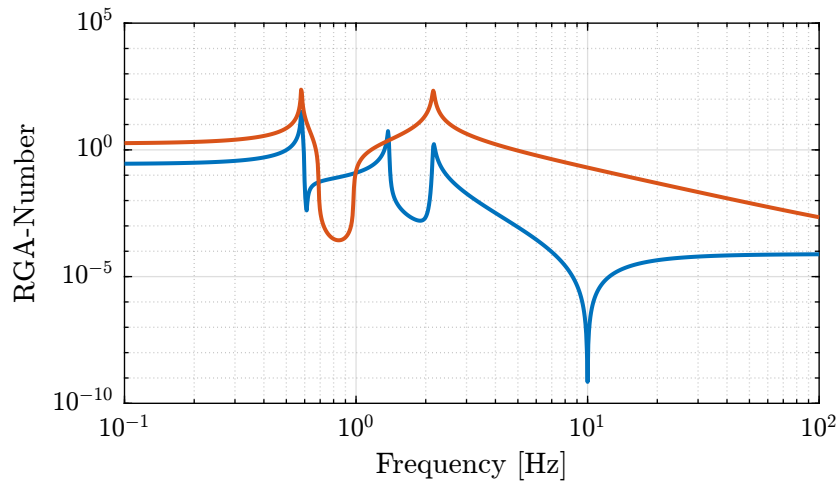
## 1.9 Diagonal Controller

The control diagram for the centralized control is shown in Figure 1.14.

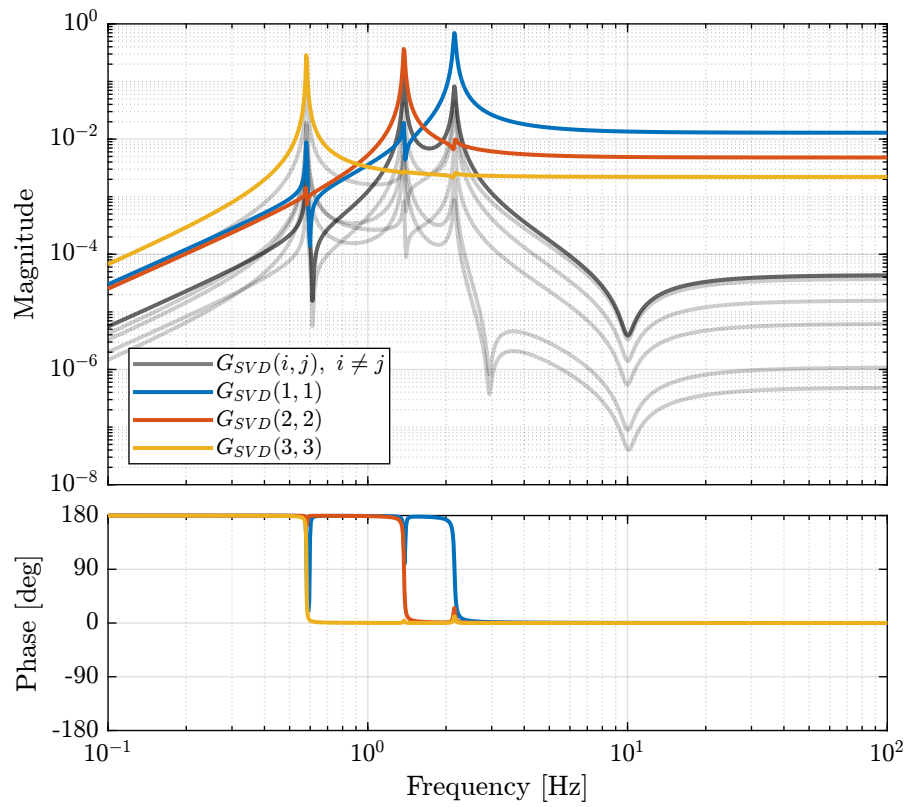
The controller  $K_c$  is “working” in an cartesian frame. The Jacobian is used to convert forces in the cartesian frame to forces applied by the actuators.



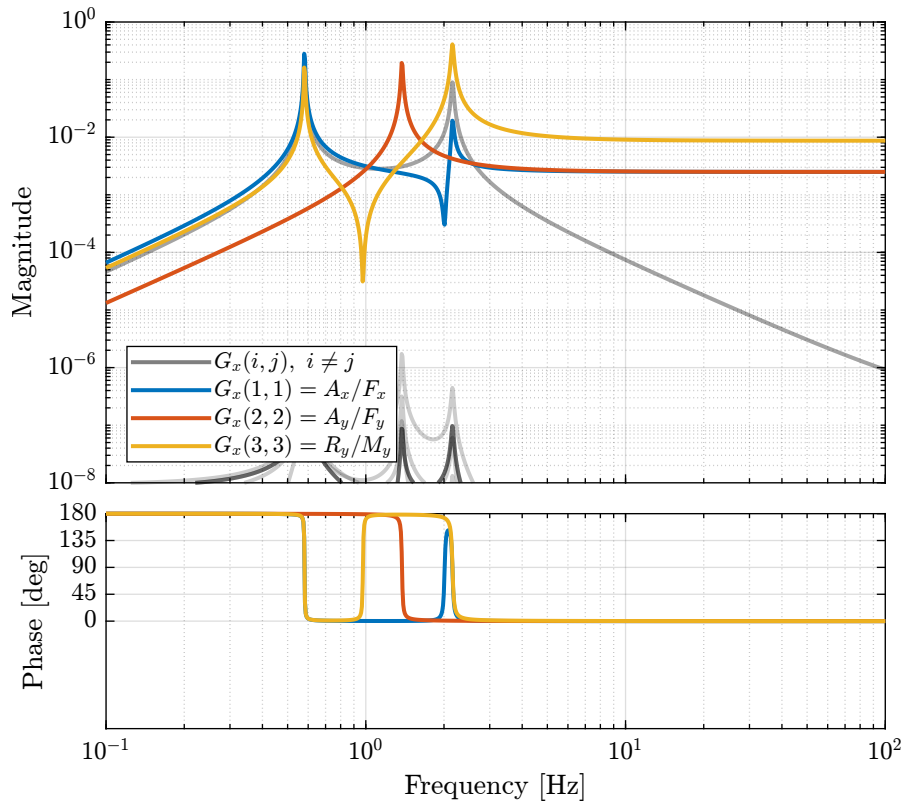
**Figure 1.10:** Obtained norm of RGA elements for the SVD decoupled plant and the Jacobian decoupled plant



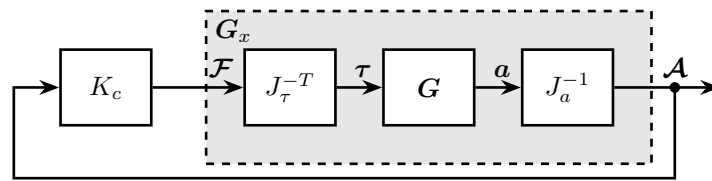
**Figure 1.11:** RGA-Number for the Gravimeter



**Figure 1.12:** Decoupled Plant using SVD

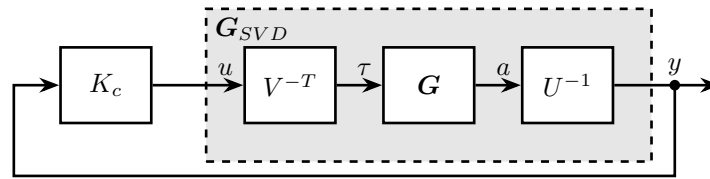


**Figure 1.13:** Gravimeter Platform Plant from forces (resp. torques) applied by the legs to the acceleration (resp. angular acceleration) of the platform as well as all the coupling terms between the two (non-diagonal terms of the transfer function matrix)



**Figure 1.14:** Control Diagram for the Centralized control

The SVD control architecture is shown in Figure 1.15. The matrices  $U$  and  $V$  are used to decoupled the plant  $G$ .



**Figure 1.15:** Control Diagram for the SVD control

We choose the controller to be a low pass filter:

$$K_c(s) = \frac{G_0}{1 + \frac{s}{\omega_0}}$$

$G_0$  is tuned such that the crossover frequency corresponding to the diagonal terms of the loop gain is equal to  $\omega_c$

```
Matlab
wc = 2*pi*10; % Crossover Frequency [rad/s]
w0 = 2*pi*0.1; % Controller Pole [rad/s]
```

```
Matlab
K_cen = diag(1./diag(abs(evalfr(Gx, j*wc))))*(1/abs(evalfr(1/(1 + s/w0), j*wc)))/(1 + s/w0);
L_cen = K_cen*Gx;
G_cen = feedback(G, pinv(Jt')*K_cen*pinv(Ja));
```

```
Matlab
K_svd = diag(1./diag(abs(evalfr(Gsvd, j*wc))))*(1/abs(evalfr(1/(1 + s/w0), j*wc)))/(1 + s/w0);
L_svd = K_svd*Gsvd;
U_inv = inv(U);
G_svd = feedback(G, inv(V')*K_svd*U_inv(1:3, :));
```

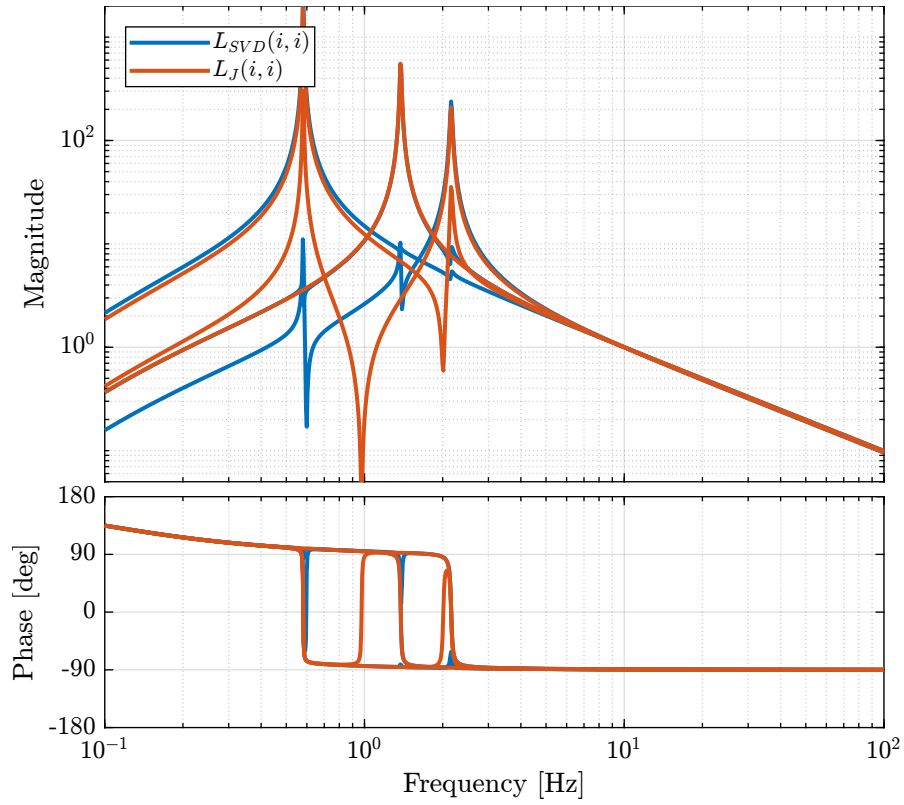
The obtained diagonal elements of the loop gains are shown in Figure 1.16.

## 1.10 Closed-Loop system Performances

Let's first verify the stability of the closed-loop systems:

```
Matlab
isstable(G_cen)
```

```
Results
ans =
logical
1
```



**Figure 1.16:** Comparison of the diagonal elements of the loop gains for the SVD control architecture and the Jacobian one



```
isstable(G_svd)                                Matlab
```

```
ans =  
logical  
1                                             Results
```

The obtained transmissibility in Open-loop, for the centralized control as well as for the SVD control are shown in Figure 1.17.

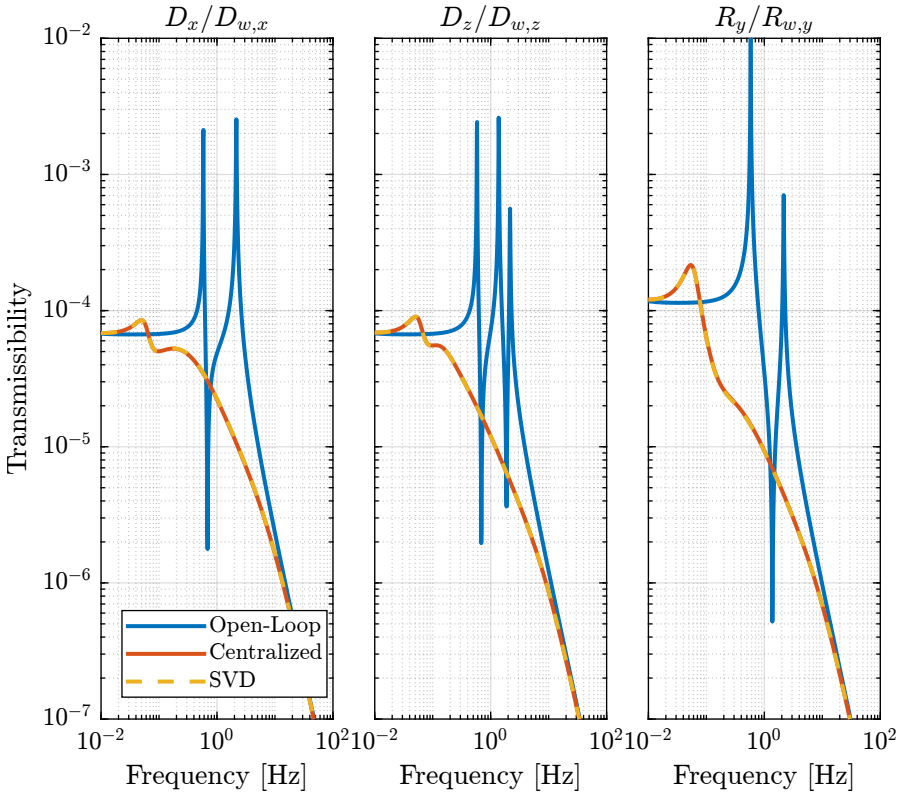


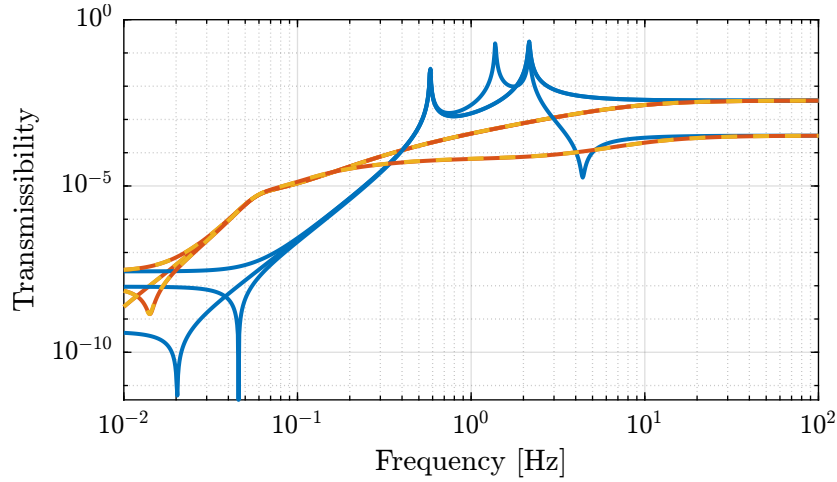
Figure 1.17: Obtained Transmissibility

### 1.11 Robustness to a change of actuator position

Let say we change the position of the actuators:

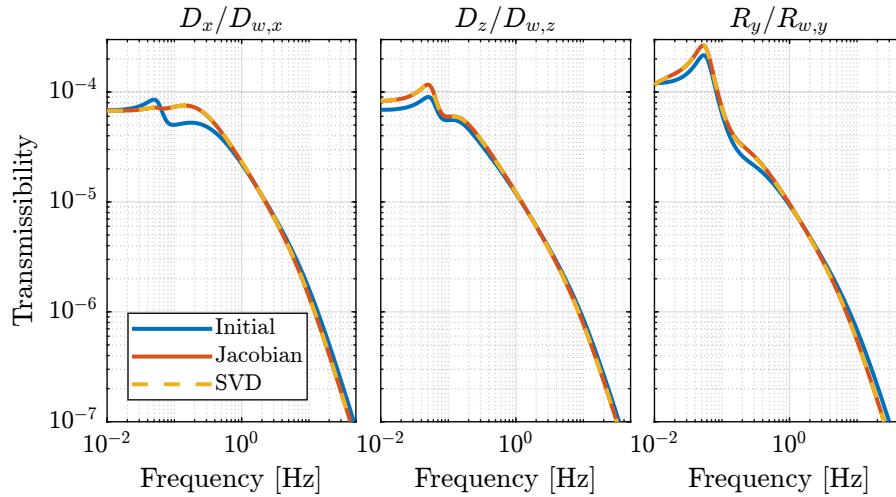
```
la = 1/2*0.7; % Position of Act. [m]  
ha = h/2*0.7; % Position of Act. [m]                                             Matlab
```

The new plant is computed, and the centralized and SVD control architectures are applied using the previously computed Jacobian matrices and  $U$  and  $V$  matrices.



**Figure 1.18:** Obtain coupling terms of the transmissibility matrix

The closed-loop system are still stable in both cases, and the obtained transmissibility are equivalent as shown in Figure 1.19.



**Figure 1.19:** Transmissibility for the initial CL system and when the position of actuators are changed

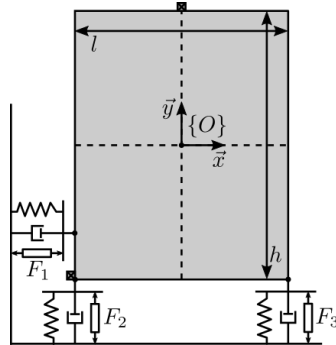
## 1.12 Choice of the reference frame for Jacobian decoupling

If we want to decouple the system at low frequency (determined by the stiffness matrix), we have to compute the Jacobian at a point where the stiffness matrix is diagonal. A displacement (resp. rotation) of the mass at this particular point should induce a **pure** force (resp. torque) on the same point due to stiffnesses in the system. This can be verified by geometrical computations.

If we want to decouple the system at high frequency (determined by the mass matrix), we have to compute the Jacobians at the Center of Mass of the suspended solid. Similarly to the stiffness analysis, when considering only the inertia effects (neglecting the stiffnesses), a force (resp. torque) applied at this point (the center of mass) should induce a **pure** acceleration (resp. angular acceleration).

Ideally, we would like to have a decoupled mass matrix and stiffness matrix at the same time. To do so, the actuators (springs) should be positioned such that the stiffness matrix is diagonal when evaluated at the CoM of the solid.

### 1.12.1 Decoupling of the mass matrix



**Figure 1.20:** Choice of  $\{O\}$  such that the Mass Matrix is Diagonal

```
Matlab
la = l/2; % Position of Act. [m]
ha = h/2; % Position of Act. [m]
```

```
Matlab
%% Name of the Simulink File
mdl = 'gravimeter';

%% Input/Output definition
clear io; io_i = 1;
io(io_i) = linio([mdl, '/F1'], 1, 'openinput'); io_i = io_i + 1;
io(io_i) = linio([mdl, '/F2'], 1, 'openinput'); io_i = io_i + 1;
io(io_i) = linio([mdl, '/F3'], 1, 'openinput'); io_i = io_i + 1;
io(io_i) = linio([mdl, '/Acc_side'], 1, 'openoutput'); io_i = io_i + 1;
io(io_i) = linio([mdl, '/Acc_side'], 2, 'openoutput'); io_i = io_i + 1;
io(io_i) = linio([mdl, '/Acc_top'], 1, 'openoutput'); io_i = io_i + 1;
io(io_i) = linio([mdl, '/Acc_top'], 2, 'openoutput'); io_i = io_i + 1;

G = linearize(mdl, io);
G.InputName = {'F1', 'F2', 'F3'};
G.OutputName = {'Ax1', 'Ay1', 'Ax2', 'Ay2'};
```

Decoupling at the CoM (Mass decoupled)

```
Matlab
JMa = [1 0 -h/2
        0 1 l/2
        1 0 h/2
        0 1 0];

JMt = [1 0 -ha
        0 1 la
        0 1 -la];
```

```

Matlab
GM = pinv(JMa)*G*pinv(JMt');
GM.InputName = {'Fx', 'Fy', 'Mz'};
GM.OutputName = {'Dx', 'Dy', 'Rz'};

```

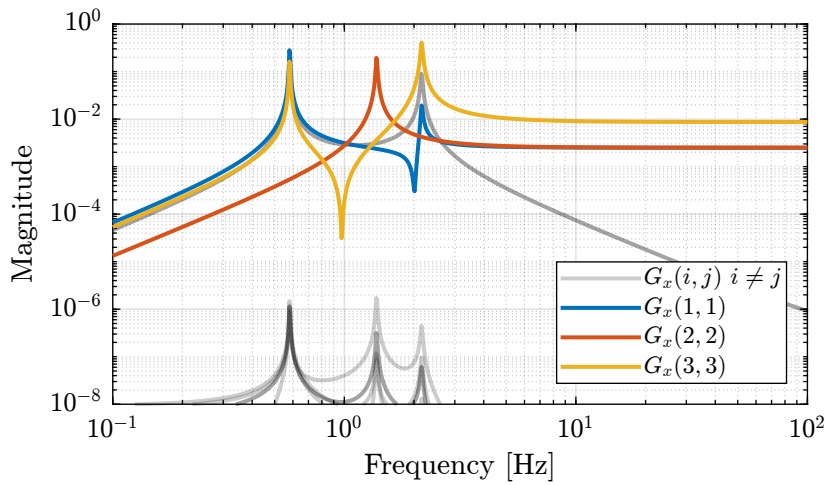


Figure 1.21: Diagonal and off-diagonal elements of the decoupled plant

### 1.12.2 Decoupling of the stiffness matrix

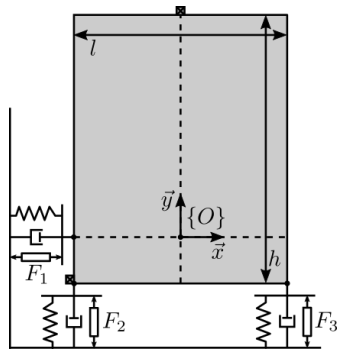


Figure 1.22: Choice of {O} such that the Stiffness Matrix is Diagonal

Decoupling at the point where K is diagonal ( $x = 0, y = -h/2$  from the schematic {O} frame):

```

Matlab
JKa = [1 0 0
        0 1 -1/2
        1 0 -h
        0 1 0];

JKt = [1 0 0
        0 1 -1a
        0 1 1a];

```

And the plant  $G_x$  is computed:

```

GK = pinv(JKa)*G*pinv(JKt');
GK.InputName = {'Fx', 'Fy', 'Mz'};
GK.OutputName = {'Dx', 'Dy', 'Rz'};

```

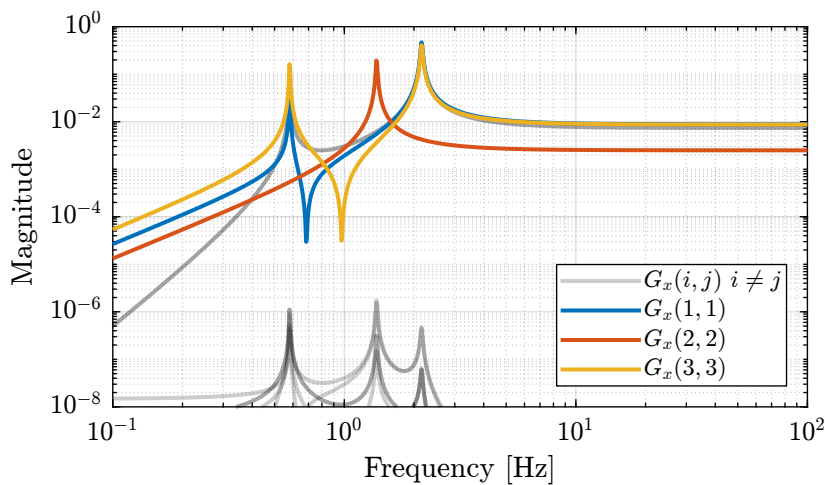


Figure 1.23: Diagonal and off-diagonal elements of the decoupled plant

### 1.12.3 Combined decoupling of the mass and stiffness matrices

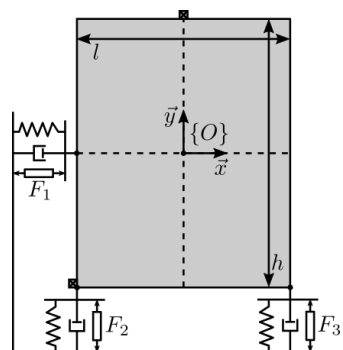


Figure 1.24: Ideal location of the actuators such that both the mass and stiffness matrices are diagonal

To do so, the actuator position should be modified

```

la = l/2; % Position of Act. [m]
ha = 0; % Position of Act. [m]

```

```

%% Name of the Simulink File
mdl = 'gravimeter';

%% Input/Output definition
clear io; io_i = 1;
io(io_i) = linio([mdl, '/F1'], 1, 'openinput'); io_i = io_i + 1;
io(io_i) = linio([mdl, '/F2'], 1, 'openinput'); io_i = io_i + 1;

```

```

io(io_i) = linio([mdl, '/F3'], 1, 'openinput'); io_i = io_i + 1;
io(io_i) = linio([mdl, '/Acc_side'], 1, 'openoutput'); io_i = io_i + 1;
io(io_i) = linio([mdl, '/Acc_side'], 2, 'openoutput'); io_i = io_i + 1;
io(io_i) = linio([mdl, '/Acc_top'], 1, 'openoutput'); io_i = io_i + 1;
io(io_i) = linio([mdl, '/Acc_top'], 2, 'openoutput'); io_i = io_i + 1;

G = linearize(mdl, io);
G.InputName = {'F1', 'F2', 'F3'};
G.OutputName = {'Ax1', 'Ay1', 'Ax2', 'Ay2'};

```

```

Matlab
JMa = [1 0 -h/2
        0 1 1/2
        1 0 h/2
        0 1 0];

JMt = [1 0 -ha
        0 1 la
        0 1 -la];

```

```

Matlab
GKM = pinv(JMa)*G*pinv(JMt');
GKM.InputName = {'Fx', 'Fy', 'Mz'};
GKM.OutputName = {'Dx', 'Dy', 'Rz'};

```

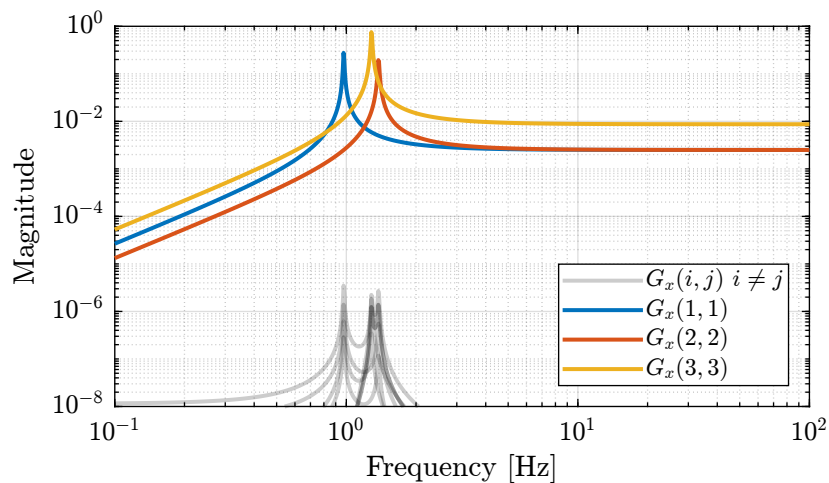


Figure 1.25: Diagonal and off-diagonal elements of the decoupled plant

### 1.12.4 Conclusion

Ideally, the mechanical system should be designed in order to have a decoupled stiffness matrix at the CoM of the solid.

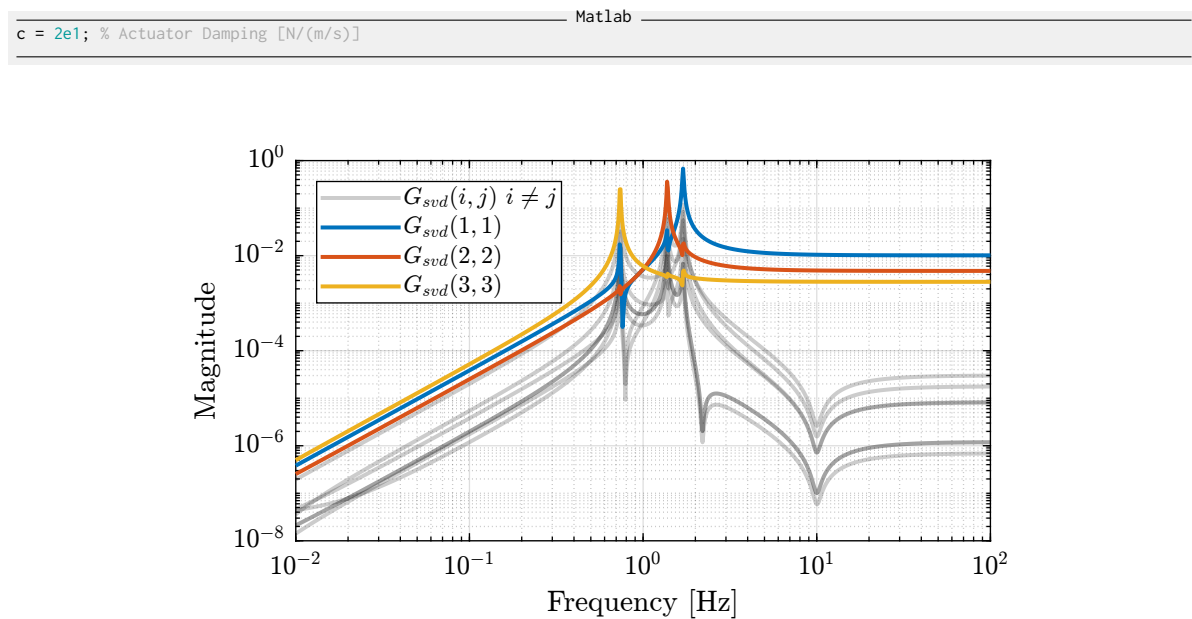
If not the case, the system can either be decoupled as low frequency if the Jacobian are evaluated at a point where the stiffness matrix is decoupled. Or it can be decoupled at high frequency if the Jacobians are evaluated at the CoM.

## 1.13 SVD decoupling performances

As the SVD is applied on a **real approximation** of the plant dynamics at a frequency  $\omega_0$ , it is foreseen that the effectiveness of the decoupling depends on the validity of the real approximation.

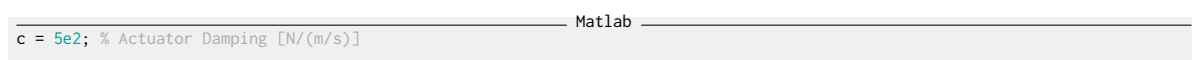
Let's do the SVD decoupling on a plant that is mostly real (low damping) and one with a large imaginary part (larger damping).

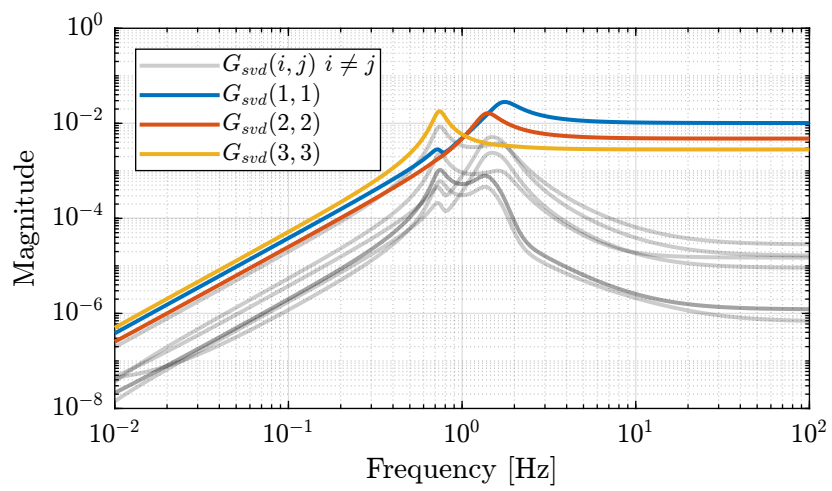
Start with small damping, the obtained diagonal and off-diagonal terms are shown in Figure 1.26.



**Figure 1.26:** Diagonal and off-diagonal term when decoupling with SVD on the gravimeter with small damping

Now take a larger damping, the obtained diagonal and off-diagonal terms are shown in Figure 1.27.





**Figure 1.27:** Diagonal and off-diagonal term when decoupling with SVD on the gravimeter with high damping

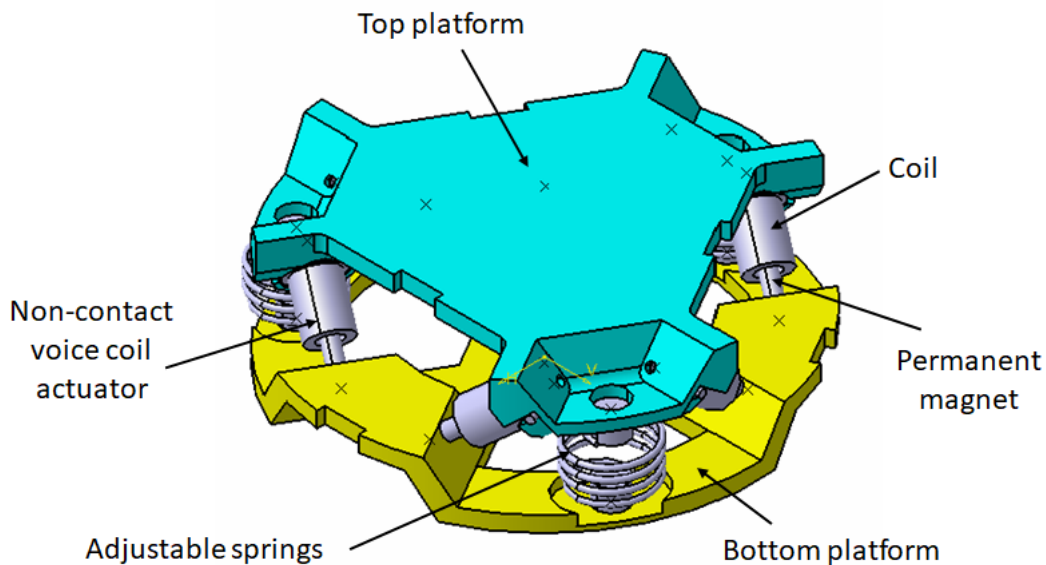


## 2 Stewart Platform - Simscape Model

In this analysis, we wish to applied SVD control to the Stewart Platform shown in Figure 2.1.

Some notes about the system:

- 6 voice coils actuators are used to control the motion of the top platform.
- the motion of the top platform is measured with a 6-axis inertial unit (3 acceleration + 3 angular accelerations)
- the control objective is to isolate the top platform from vibrations coming from the bottom platform



**Figure 2.1:** Stewart Platform CAD View

The analysis of the SVD/Jacobian control applied to the Stewart platform is performed in the following sections:

- Section 2.1: The parameters of the Simscape model of the Stewart platform are defined
- Section 2.2: The plant is identified from the Simscape model and the system coupling is shown
- Section 2.3: The plant is first decoupled using the Jacobian
- Section 2.4: The decoupling is performed thanks to the SVD. To do so a real approximation of

the plant is computed.

- Section 2.5: The effectiveness of the decoupling with the Jacobian and SVD are compared using the Gershorin Radii
- Section 2.6:
- Section 2.7: The dynamics of the decoupled plants are shown
- Section 2.8: A diagonal controller is defined to control the decoupled plant
- Section 2.9: Finally, the closed loop system properties are studied

## 2.1 Simscape Model - Parameters

```
Matlab  
open('drone_platform.slx');
```

Definition of spring parameters:

```
Matlab  
kx = 0.5*1e3/3; % [N/m]  
ky = 0.5*1e3/3;  
kz = 1e3/3;  
  
cx = 0.025; % [Nm/rad]  
cy = 0.025;  
cz = 0.025;
```

We suppose the sensor is perfectly positioned.

```
Matlab  
sens_pos_error = zeros(3,1);
```

Gravity:

```
Matlab  
g = 0;
```

We load the Jacobian (previously computed from the geometry):

```
Matlab  
load('jacobian.mat', 'Aa', 'Ab', 'As', 'l', 'J');
```

We initialize other parameters:

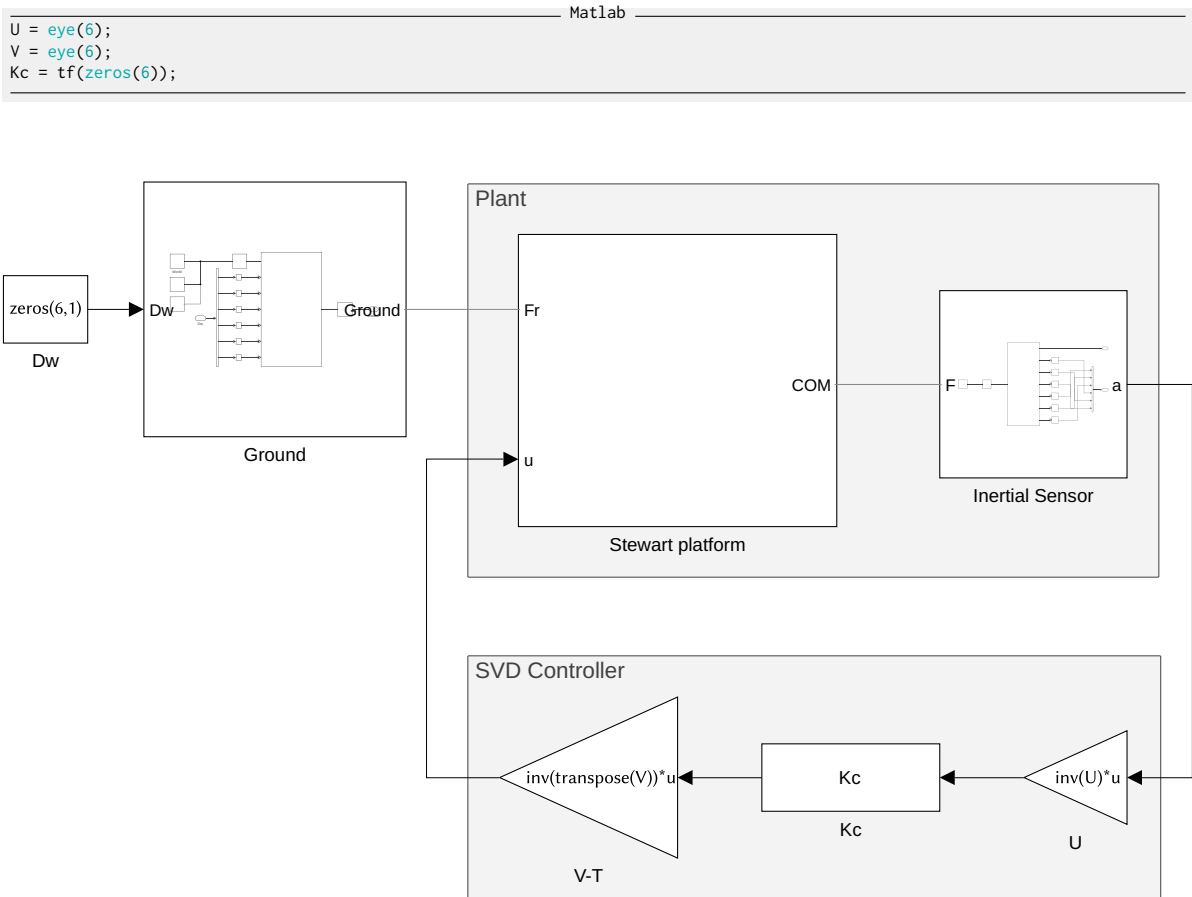


Figure 2.2: General view of the Simscape Model

## 2.2 Identification of the plant

The plant shown in Figure 2.4 is identified from the Simscape model.

The inputs are:

- $D_w$  translation and rotation of the bottom platform (with respect to the center of mass of the top platform)
- $\tau$  the 6 forces applied by the voice coils

The outputs are the 6 accelerations measured by the inertial unit.

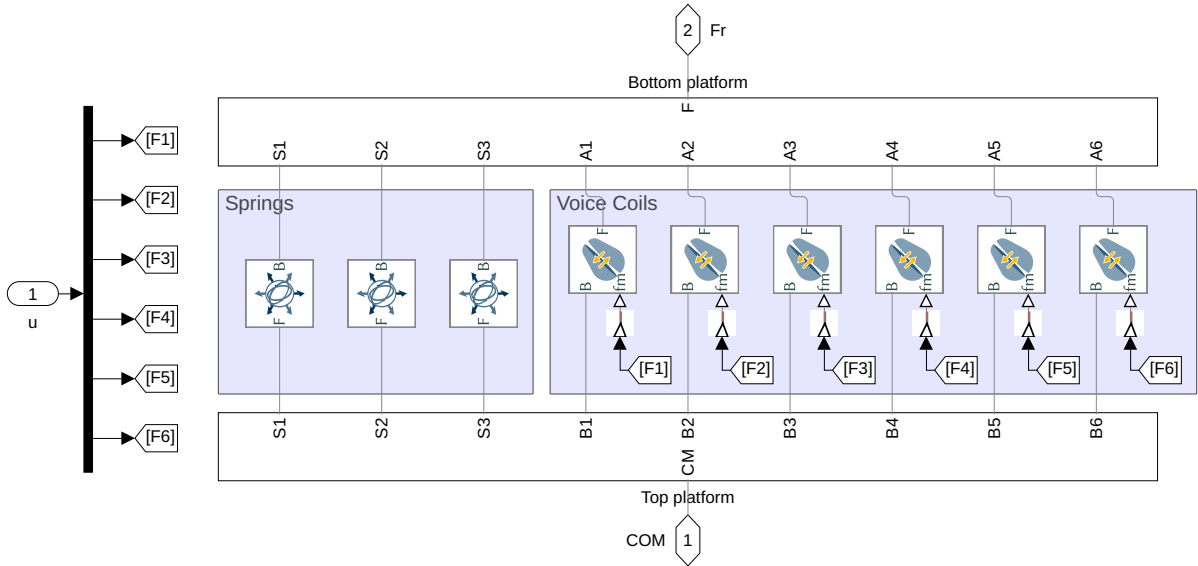
Matlab

```

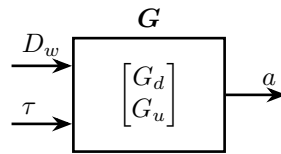
%% Name of the Simulink File
mdl = 'drone_platform';

%% Input/Output definition
clear io; io_i = 1;
io(io_i) = linio([mdl, '/Dw'], 1, 'openinput'); io_i = io_i + 1; % Ground Motion
io(io_i) = linio([mdl, '/V-T'], 1, 'openinput'); io_i = io_i + 1; % Actuator Forces
io(io_i) = linio([mdl, '/Inertial Sensor'], 1, 'openoutput'); io_i = io_i + 1; % Top platform acceleration

```



**Figure 2.3:** Simscape model of the Stewart platform



**Figure 2.4:** Considered plant  $G = \begin{bmatrix} G_d \\ G_u \end{bmatrix}$ .  $D_w$  is the translation/rotation of the support,  $\tau$  the actuator forces,  $a$  the acceleration/angular acceleration of the top platform

```

G = linearize mdl, io);
G.InputName = {'Dwx', 'Dwy', 'Dwz', 'Rwx', 'Rwy', 'Rwz', ...
              'F1', 'F2', 'F3', 'F4', 'F5', 'F6'};
G.OutputName = {'Ax', 'Ay', 'Az', 'Arx', 'Ary', 'Arz'};

% Plant
Gu = G(:, {'F1', 'F2', 'F3', 'F4', 'F5', 'F6'});
% Disturbance dynamics
Gd = G(:, {'Dwx', 'Dwy', 'Dwz', 'Rwx', 'Rwy', 'Rwz'});

```

There are 24 states (6dof for the bottom platform + 6dof for the top platform).

```

Matlab
size(G)

Results
State-space model with 6 outputs, 12 inputs, and 24 states.

```

The elements of the transfer matrix  $\mathbf{G}$  corresponding to the transfer function from actuator forces  $\tau$  to the measured acceleration  $a$  are shown in Figure 2.5.

One can easily see that the system is strongly coupled.

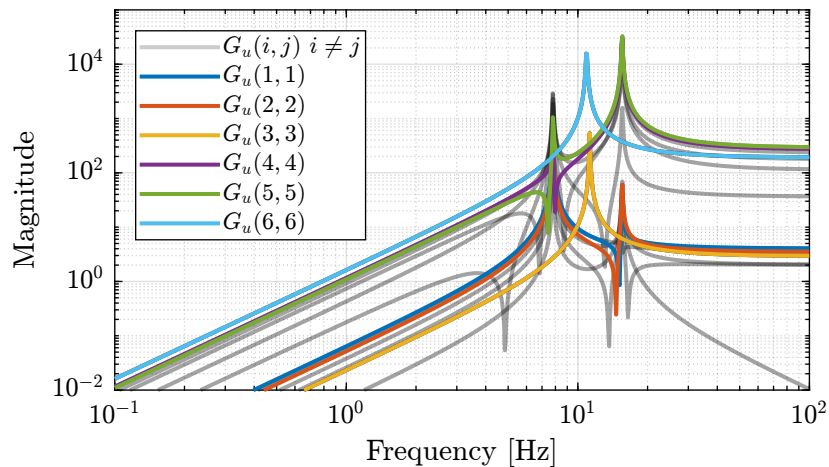


Figure 2.5: Magnitude of all 36 elements of the transfer function matrix  $G_u$

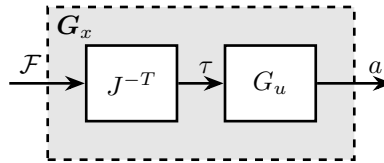
## 2.3 Decoupling using the Jacobian

Consider the control architecture shown in Figure 2.6. The Jacobian matrix is used to transform forces/torques applied on the top platform to the equivalent forces applied by each actuator.

The Jacobian matrix is computed from the geometry of the platform (position and orientation of the actuators).

**Table 2.1:** Computed Jacobian Matrix

0.811	0.0	0.584	-0.018	-0.008	0.025
-0.406	-0.703	0.584	-0.016	-0.012	-0.025
-0.406	0.703	0.584	0.016	-0.012	0.025
0.811	0.0	0.584	0.018	-0.008	-0.025
-0.406	-0.703	0.584	0.002	0.019	0.025
-0.406	0.703	0.584	-0.002	0.019	-0.025



**Figure 2.6:** Decoupled plant  $G_x$  using the Jacobian matrix  $J$

We define a new plant:

$$G_x(s) = G(s)J^{-T}$$

$G_x(s)$  correspond to the transfer function from forces and torques applied to the top platform to the absolute acceleration of the top platform.

```
Matlab
Gx = Gu*inv(J');
Gx.InputName = {'Fx', 'Fy', 'Fz', 'Mx', 'My', 'Mz'};
```

## 2.4 Decoupling using the SVD

In order to decouple the plant using the SVD, first a real approximation of the plant transfer function matrix as the crossover frequency is required.

Let's compute a real approximation of the complex matrix  $H_1$  which corresponds to the the transfer function  $G_u(j\omega_c)$  from forces applied by the actuators to the measured acceleration of the top platform evaluated at the frequency  $\omega_c$ .

```
Matlab
wc = 2*pi*30; % Decoupling frequency [rad/s]
H1 = evalfr(Gu, j*wc);
```

The real approximation is computed as follows:

```
Matlab
D = pinv(real(H1'*H1));
H1 = inv(D*real(H1'*diag(exp(j*angle(diag(H1*D*H1.'))/2)))));
```

Note that the plant  $G_u$  at  $\omega_c$  is already an almost real matrix. This can be seen on the Bode plots where the phase is close to 1. This can be verified below where only the real value of  $G_u(\omega_c)$  is shown

**Table 2.2:** Real approximate of  $G$  at the decoupling frequency  $\omega_c$

4.4	-2.1	-2.1	4.4	-2.4	-2.4
-0.2	-3.9	3.9	0.2	-3.8	3.8
3.4	3.4	3.4	3.4	3.4	3.4
-367.1	-323.8	323.8	367.1	43.3	-43.3
-162.0	-237.0	-237.0	-162.0	398.9	398.9
220.6	-220.6	220.6	-220.6	220.6	-220.6

**Table 2.3:** Real part of  $G$  at the decoupling frequency  $\omega_c$

4.4	-2.1	-2.1	4.4	-2.4	-2.4
-0.2	-3.9	3.9	0.2	-3.8	3.8
3.4	3.4	3.4	3.4	3.4	3.4
-367.1	-323.8	323.8	367.1	43.3	-43.3
-162.0	-237.0	-237.0	-162.0	398.9	398.9
220.6	-220.6	220.6	-220.6	220.6	-220.6

Now, the Singular Value Decomposition of  $H_1$  is performed:

$$H_1 = U\Sigma V^H$$

```
Matlab  
[U,~,V] = svd(H1);
```

**Table 2.4:** Obtained matrix  $U$

-0.005	7e-06	6e-11	-3e-06	-1	0.1
-7e-06	-0.005	-9e-09	-5e-09	-0.1	-1
4e-08	-2e-10	-6e-11	-1	3e-06	-3e-07
-0.002	-1	-5e-06	2e-10	0.0006	0.005
1	-0.002	-1e-08	2e-08	-0.005	0.0006
-4e-09	5e-06	-1	6e-11	-2e-09	-1e-08

The obtained matrices  $U$  and  $V$  are used to decouple the system as shown in Figure 2.7.

The decoupled plant is then:

$$G_{SVD}(s) = U^{-1}G_u(s)V^{-H}$$

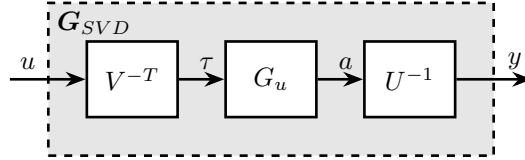
```
Matlab  
Gsvd = inv(U)*Gu*inv(V');
```

## 2.5 Verification of the decoupling using the “Gershgorin Radii”

The “Gershgorin Radii” is computed for the coupled plant  $G(s)$ , for the “Jacobian plant”  $G_x(s)$  and the “SVD Decoupled Plant”  $G_{SVD}(s)$ :

**Table 2.5:** Obtained matrix  $V$

-0.2	0.5	-0.4	-0.4	-0.6	-0.2
-0.3	0.5	0.4	-0.4	0.5	0.3
-0.3	-0.5	-0.4	-0.4	0.4	-0.4
-0.2	-0.5	0.4	-0.4	-0.5	0.3
0.6	-0.06	-0.4	-0.4	0.1	0.6
0.6	0.06	0.4	-0.4	-0.006	-0.6

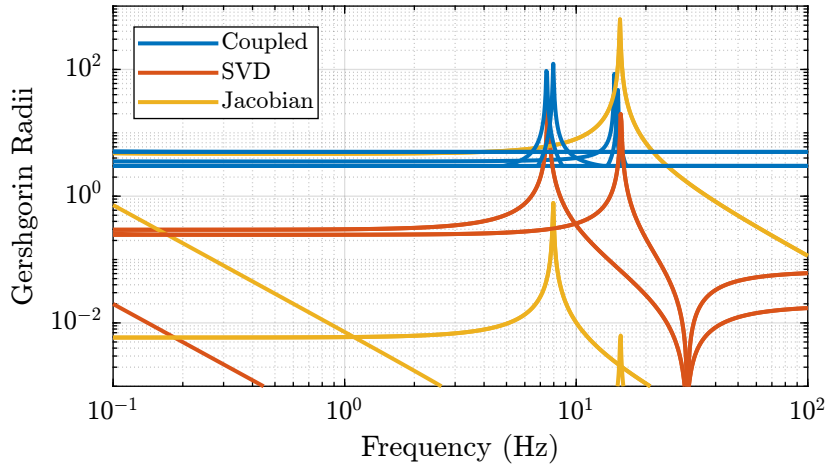


**Figure 2.7:** Decoupled plant  $G_{SVD}$  using the Singular Value Decomposition

The ‘‘Gershgorin Radii’’ of a matrix  $S$  is defined by:

$$\zeta_i(j\omega) = \frac{\sum_{j \neq i} |S_{ij}(j\omega)|}{|S_{ii}(j\omega)|}$$

This is computed over the following frequencies.



**Figure 2.8:** Gershgorin Radii of the Coupled and Decoupled plants

## 2.6 Verification of the decoupling using the ‘‘Relative Gain Array’’

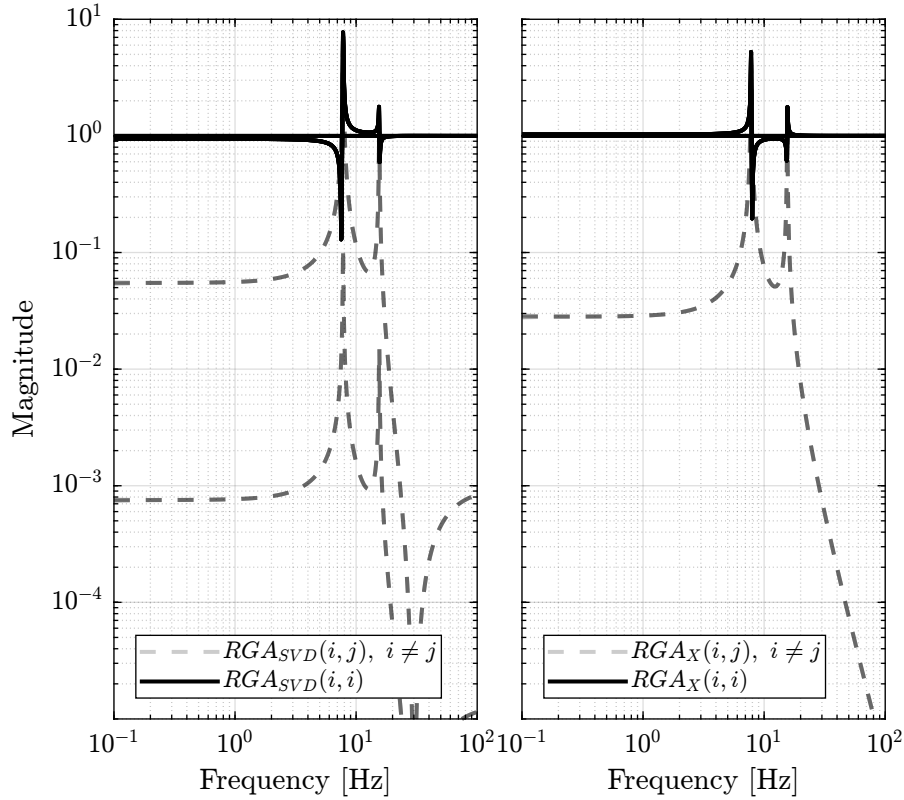
The relative gain array (RGA) is defined as:

$$\Lambda(G(s)) = G(s) \times (G(s)^{-1})^T \quad (2.1)$$



where  $\times$  denotes an element by element multiplication and  $G(s)$  is an  $n \times n$  square transfer matrix.

The obtained RGA elements are shown in Figure 2.9.



**Figure 2.9:** Obtained norm of RGA elements for the SVD decoupled plant and the Jacobian decoupled plant

## 2.7 Obtained Decoupled Plants

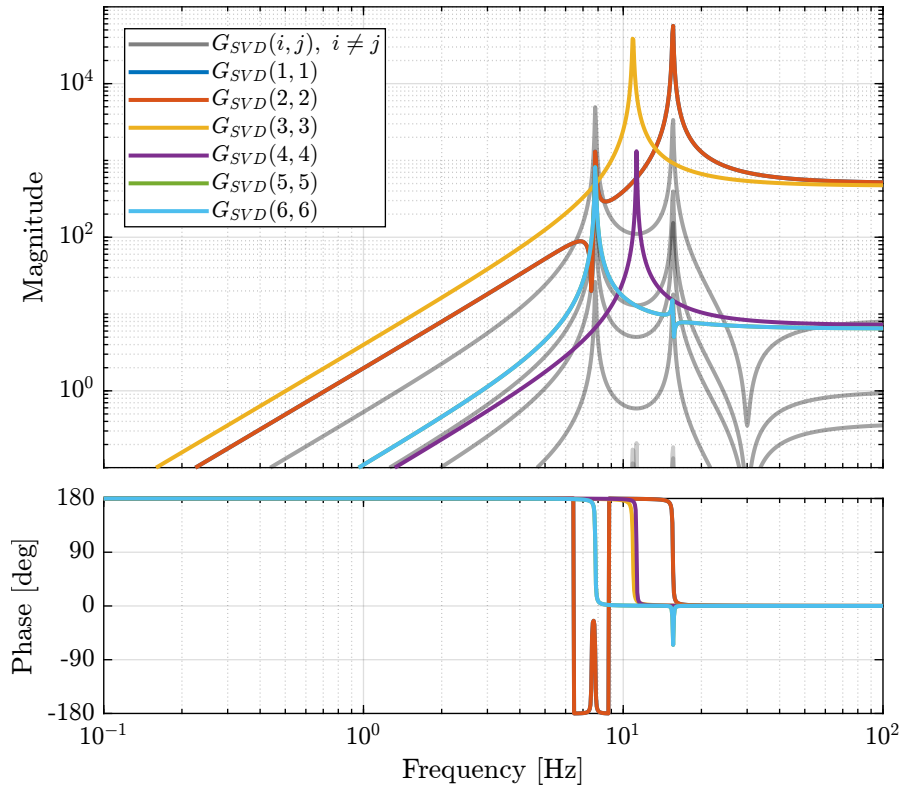
The bode plot of the diagonal and off-diagonal elements of  $G_{SVD}$  are shown in Figure 2.10.

Similarly, the bode plots of the diagonal elements and off-diagonal elements of the decoupled plant  $G_x(s)$  using the Jacobian are shown in Figure 2.11.

## 2.8 Diagonal Controller

The control diagram for the centralized control is shown in Figure 2.12.

The controller  $K_c$  is “working” in an cartesian frame. The Jacobian is used to convert forces in the cartesian frame to forces applied by the actuators.



**Figure 2.10:** Decoupled Plant using SVD

The SVD control architecture is shown in Figure 2.13. The matrices  $U$  and  $V$  are used to decouple the plant  $G$ .

We choose the controller to be a low pass filter:

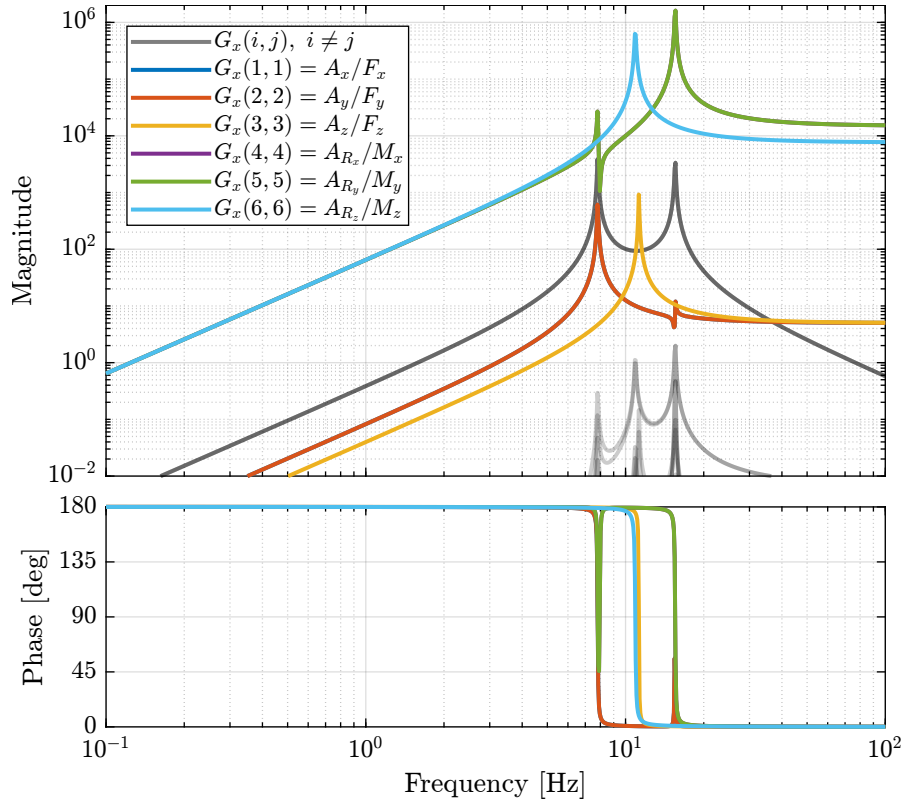
$$K_c(s) = \frac{G_0}{1 + \frac{s}{\omega_0}}$$

$G_0$  is tuned such that the crossover frequency corresponding to the diagonal terms of the loop gain is equal to  $\omega_c$

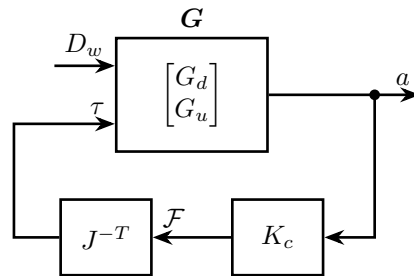
```
Matlab
wc = 2*pi*80; % Crossover Frequency [rad/s]
w0 = 2*pi*0.1; % Controller Pole [rad/s]
```

```
Matlab
K_cen = diag(1./diag(abs(evalfr(Gx, j*wc))))*(1/abs(evalfr(1/(1 + s/w0), j*wc)))/(1 + s/w0);
L_cen = K_cen*Gx;
G_cen = feedback(G, pinv(J')*K_cen, [7:12], [1:6]);
```

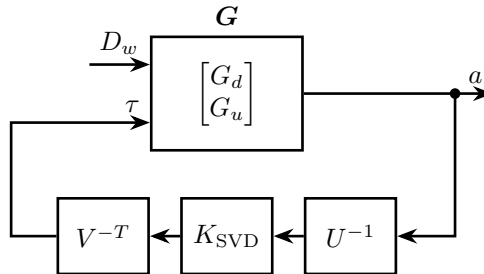
```
Matlab
K_svd = diag(1./diag(abs(evalfr(Gsvd, j*wc))))*(1/abs(evalfr(1/(1 + s/w0), j*wc)))/(1 + s/w0);
L_svd = K_svd*Gsvd;
G_svd = feedback(G, inv(V')*K_svd*inv(U), [7:12], [1:6]);
```



**Figure 2.11:** Stewart Platform Plant from forces (resp. torques) applied by the legs to the acceleration (resp. angular acceleration) of the platform as well as all the coupling terms between the two (non-diagonal terms of the transfer function matrix)

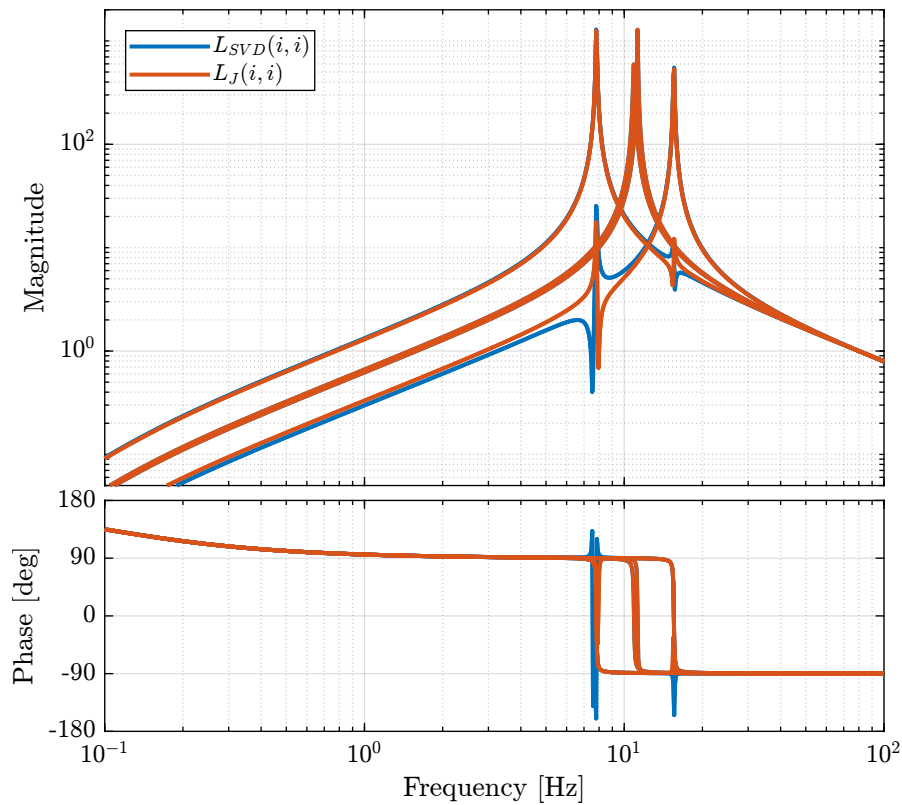


**Figure 2.12:** Control Diagram for the Centralized control



**Figure 2.13:** Control Diagram for the SVD control

The obtained diagonal elements of the loop gains are shown in Figure 2.14.



**Figure 2.14:** Comparison of the diagonal elements of the loop gains for the SVD control architecture and the Jacobian one

## 2.9 Closed-Loop system Performances

Let's first verify the stability of the closed-loop systems:

```
isstable(G_cen)                                Matlab
```

```
ans =
logical
1                                Results
```

```
isstable(G_svd)                                Matlab
```

```
ans =
logical
1
```

The obtained transmissibility in Open-loop, for the centralized control as well as for the SVD control are shown in Figure 2.15.

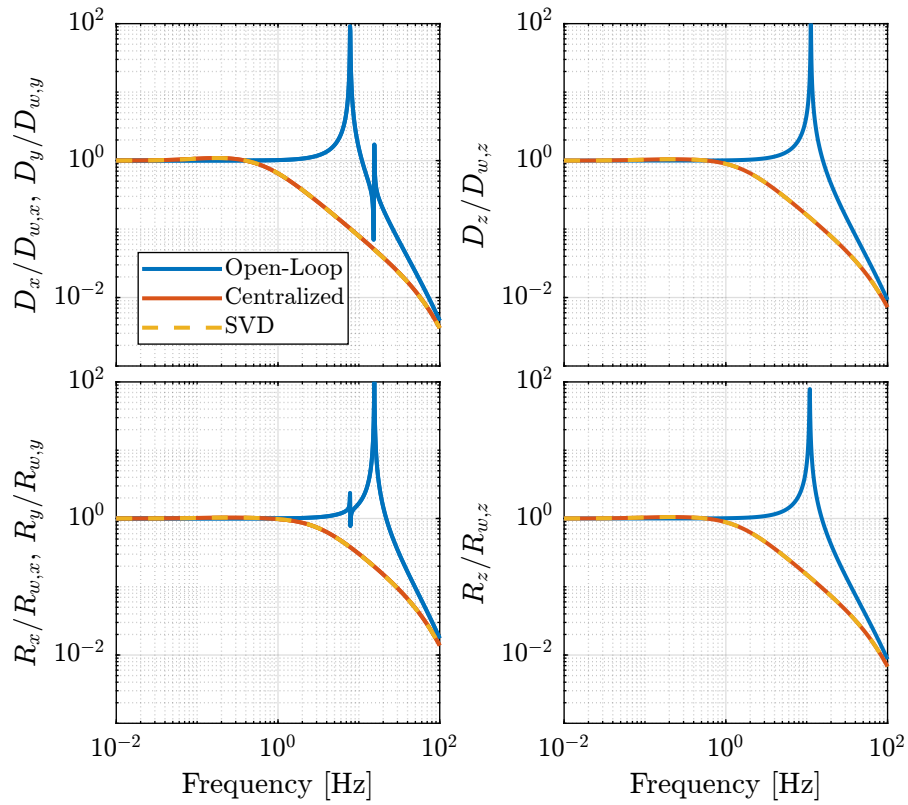


Figure 2.15: Obtained Transmissibility