

Diagonal control using the SVD and the Jacobian Matrix

Dehaeze Thomas

March 5, 2021

Contents

1	Gravimeter - Simscape Model	4
1.1	Introduction	4
1.2	Gravimeter Model - Parameters	4
1.3	System Identification	5
1.4	Decoupling using the Jacobian	8
1.5	Decoupling using the SVD	9
1.6	Verification of the decoupling using the “Gershgorin Radii”	11
1.7	Verification of the decoupling using the “Relative Gain Array”	12
1.8	Obtained Decoupled Plants	12
1.9	Diagonal Controller	12
1.10	Closed-Loop system Performances	16
1.11	Robustness to a change of actuator position	18
1.12	Choice of the reference frame for Jacobian decoupling	21
1.12.1	Decoupling of the mass matrix	21
1.12.2	Decoupling of the stiffness matrix	22
1.12.3	Combined decoupling of the mass and stiffness matrices	23
1.12.4	Conclusion	25
1.13	SVD decoupling performances	25
2	Parallel Manipulator with Collocated actuator/sensor pairs	27
2.1	Model	27
2.2	The Jacobian Matrix	29
2.3	The Stiffness Matrix	31
2.4	Equations of motion - Frame of the legs	31
2.5	Equations of motion - “Center of mass” $\{M\}$	33
2.6	Equations of motion - “Center of stiffness” $\{K\}$	34
2.7	Conclusion	36
3	SVD / Jacobian / Model decoupling comparison	37
3.1	Test Model	37
3.2	Jacobian Decoupling	39
3.3	Modal Decoupling	40
3.4	SVD Decoupling	42
3.5	Comparison	43
3.5.1	Jacobian Decoupling	43
3.5.2	Modal Decoupling	44
3.5.3	SVD Decoupling	46
3.6	Further Notes	46
3.6.1	Robustness of the decoupling strategies?	46
3.6.2	Other decoupling strategies	46
3.7	Conclusion	46
4	Diagonal Stiffness Matrix for a planar manipulator	48
4.1	Model and Assumptions	48

4.2	Objective	49
4.3	Conditions for Diagonal Stiffness	49
4.4	Example 1 - Planar manipulator with 3 actuators	50
4.5	Example 2 - Planar manipulator with 4 actuators	52
5	Diagonal Stiffness Matrix for a general parallel manipulator	54
5.1	Model and Assumptions	54
5.2	Objective	55
5.3	Analytical formula of the stiffness matrix	55
5.4	Example 1 - 6DoF manipulator (3D)	57
5.5	Example 2 - Stewart Platform	59
6	Stiffness and Mass Matrices in the Leg's frame	60
6.1	Equations	60
6.2	Stiffness matrix	60
6.3	Mass matrix	61
6.4	Planar Example	61
7	Stewart Platform - Simscape Model	63
7.1	Simscape Model - Parameters	64
7.2	Identification of the plant	65
7.3	Decoupling using the Jacobian	67
7.4	Decoupling using the SVD	68
7.5	Verification of the decoupling using the "Gershgorin Radii"	69
7.6	Verification of the decoupling using the "Relative Gain Array"	70
7.7	Obtained Decoupled Plants	71
7.8	Diagonal Controller	71
7.9	Closed-Loop system Performances	74

In this document, the use of the Jacobian matrix and the Singular Value Decomposition to render a physical plant diagonal dominant is studied. Then, a diagonal controller is used.

These two methods are tested on two plants:

- In Section 1 on a 3-DoF gravimeter
- In Section 7 on a 6-DoF Stewart platform

1 Gravimeter - Simscape Model

1.1 Introduction

In this part, diagonal control using both the SVD and the Jacobian matrices are applied on a gravimeter model:

- Section 1.2: the model is described and its parameters are defined.
- Section 1.3: the plant dynamics from the actuators to the sensors is computed from a Simscape model.
- Section 1.4: the plant is decoupled using the Jacobian matrices.
- Section 1.5: the Singular Value Decomposition is performed on a real approximation of the plant transfer matrix and further use to decouple the system.
- Section 1.6: the effectiveness of the decoupling is computed using the Gershorin radii
- Section 1.7: the effectiveness of the decoupling is computed using the Relative Gain Array
- Section 1.8: the obtained decoupled plants are compared
- Section 1.9: the diagonal controller is developed
- Section 1.10: the obtained closed-loop performances for the two methods are compared
- Section 1.11: the robustness to a change of actuator position is evaluated
- Section 1.12: the choice of the reference frame for the evaluation of the Jacobian is discussed
- Section 1.13: the decoupling performances of SVD is evaluated for a low damped and an highly damped system

1.2 Gravimeter Model - Parameters

The model of the gravimeter is schematically shown in Figure 1.1.

The parameters used for the simulation are the following:

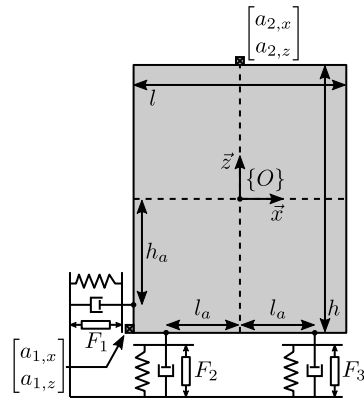


Figure 1.1: Model of the gravimeter

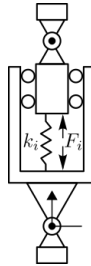


Figure 1.2: Model of the struts

```

Matlab
l = 1.0; % Length of the mass [m]
h = 1.7; % Height of the mass [m]

la = l/2; % Position of Act. [m]
ha = h/2; % Position of Act. [m]

m = 400; % Mass [kg]
I = 115; % Inertia [kg m^2]

k = 15e3; % Actuator Stiffness [N/m]
c = 2e1; % Actuator Damping [N/(m/s)]

deq = 0.2; % Length of the actuators [m]

g = 0; % Gravity [m/s^2]

```

1.3 System Identification

```

Matlab
%% Name of the Simulink File
mdl = 'gravimeter';

%% Input/Output definition
clear io; io_i = 1;
io(io_i) = linio([mdl, '/F1'], 1, 'openinput'); io_i = io_i + 1;
io(io_i) = linio([mdl, '/F2'], 1, 'openinput'); io_i = io_i + 1;
io(io_i) = linio([mdl, '/F3'], 1, 'openinput'); io_i = io_i + 1;
io(io_i) = linio([mdl, '/Acc_side'], 1, 'openoutput'); io_i = io_i + 1;
io(io_i) = linio([mdl, '/Acc_side'], 2, 'openoutput'); io_i = io_i + 1;
io(io_i) = linio([mdl, '/Acc_top'], 1, 'openoutput'); io_i = io_i + 1;

```

```
io(io_i) = linio([mdl, '/Acc_top'], 2, 'openoutput'); io_i = io_i + 1;
G = linearize(mdl, io);
G.InputName = {'F1', 'F2', 'F3'};
G.OutputName = {'Ax1', 'Ay1', 'Ax2', 'Ay2'};
```

The inputs and outputs of the plant are shown in Figure 1.3.

More precisely there are three inputs (the three actuator forces):

$$\boldsymbol{\tau} = \begin{bmatrix} \tau_1 \\ \tau_2 \\ \tau_2 \end{bmatrix} \quad (1.1)$$

And 4 outputs (the two 2-DoF accelerometers):

$$\mathbf{a} = \begin{bmatrix} a_{1x} \\ a_{1y} \\ a_{2x} \\ a_{2y} \end{bmatrix} \quad (1.2)$$

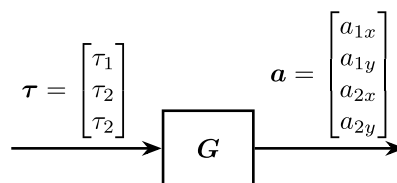


Figure 1.3: Schematic of the gravimeter plant

We can check the poles of the plant:

```
-0.12243+13.551i
-0.12243-13.551i
-0.05+8.6601i
-0.05-8.6601i
-0.0088785+3.6493i
-0.0088785-3.6493i
```

As expected, the plant has 6 states (2 translations + 1 rotation)

```
Matlab
size(G)
```

```
Results
State-space model with 4 outputs, 3 inputs, and 6 states.
```

The bode plot of all elements of the plant are shown in Figure 1.4.

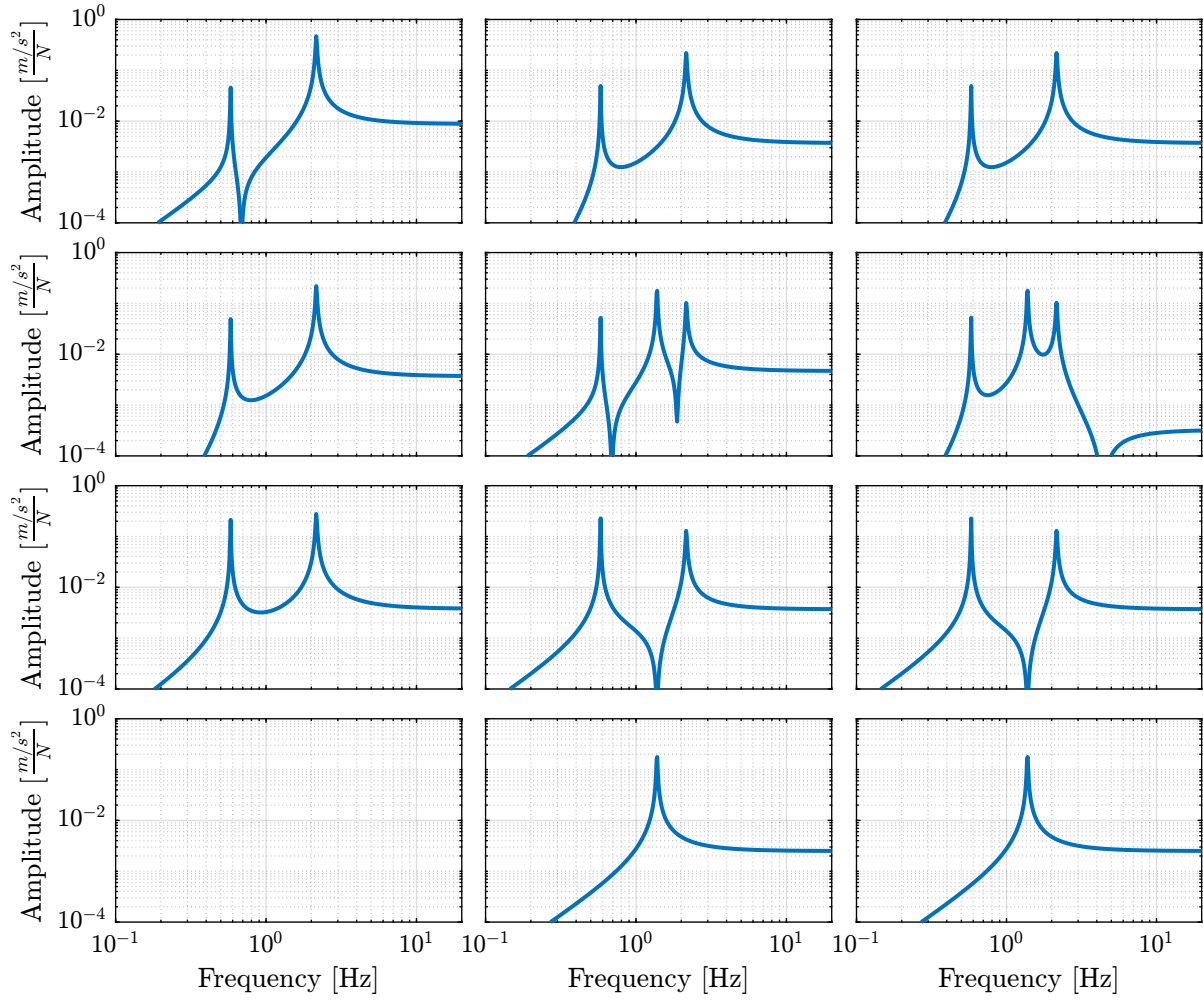


Figure 1.4: Open Loop Transfer Function from 3 Actuators to 4 Accelerometers

1.4 Decoupling using the Jacobian

Consider the control architecture shown in Figure 1.5.

The Jacobian matrix J_τ is used to transform forces applied by the three actuators into forces/torques applied on the gravimeter at its center of mass:

$$\begin{bmatrix} \tau_1 \\ \tau_2 \\ \tau_3 \end{bmatrix} = J_\tau^{-T} \begin{bmatrix} F_x \\ F_y \\ M_z \end{bmatrix} \quad (1.3)$$

The Jacobian matrix J_a is used to compute the vertical acceleration, horizontal acceleration and rotational acceleration of the mass with respect to its center of mass:

$$\begin{bmatrix} a_x \\ a_y \\ a_{R_z} \end{bmatrix} = J_a^{-1} \begin{bmatrix} a_{x1} \\ a_{y1} \\ a_{x2} \\ a_{y2} \end{bmatrix} \quad (1.4)$$

We thus define a new plant as defined in Figure 1.5.

$$\mathbf{G}_x(s) = J_a^{-1} \mathbf{G}(s) J_\tau^{-T}$$

$\mathbf{G}_x(s)$ correspond to the 3×3 transfer function matrix from forces and torques applied to the gravimeter at its center of mass to the absolute acceleration of the gravimeter's center of mass (Figure 1.5).

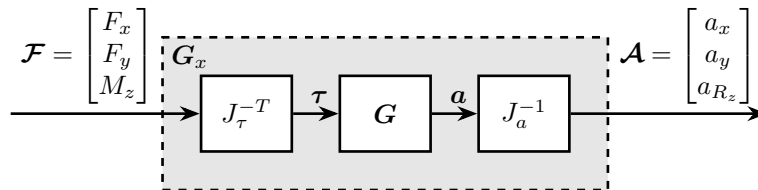


Figure 1.5: Decoupled plant \mathbf{G}_x using the Jacobian matrix J

The Jacobian corresponding to the sensors and actuators are defined below:

```

Matlab
Ja = [1 0 -h/2
      0 1 1/2
      1 0 h/2
      0 1 0];

Jt = [1 0 -ha
      0 1 la
      0 1 -la];

```

And the plant \mathbf{G}_x is computed:

```

Matlab
Gx = pinv(Ja)*G*pinv(Jt');
Gx.InputName = {'Fx', 'Fy', 'Mz'};
Gx.OutputName = {'Dx', 'Dy', 'Rz'};

```



```
size(Gx)
State-space model with 3 outputs, 3 inputs, and 6 states.
```

Results

The diagonal and off-diagonal elements of G_x are shown in Figure 1.6.

It is shown at the system is:

- decoupled at high frequency thanks to a diagonal mass matrix (the Jacobian being evaluated at the center of mass of the payload)
- coupled at low frequency due to the non-diagonal terms in the stiffness matrix, especially the term corresponding to a coupling between a force in the x direction to a rotation around z (due to the torque applied by the stiffness 1).

The choice of the frame in this the Jacobian is evaluated is discussed in Section 1.12.

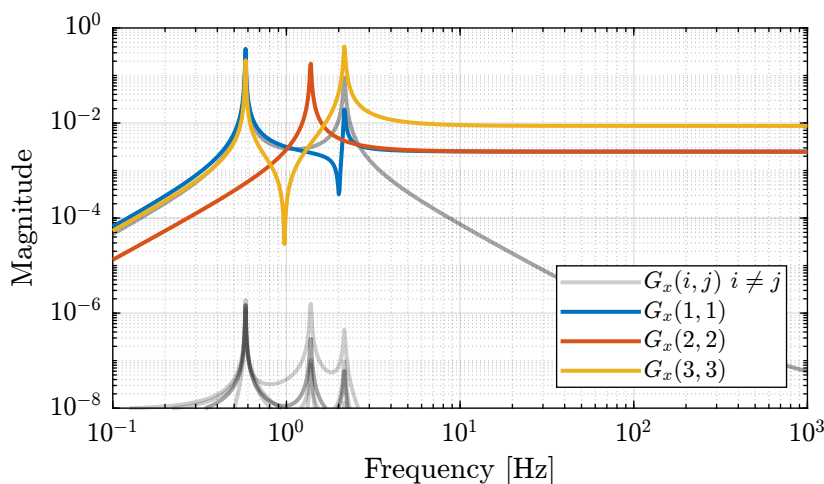


Figure 1.6: Diagonal and off-diagonal elements of G_x

1.5 Decoupling using the SVD

In order to decouple the plant using the SVD, first a real approximation of the plant transfer function matrix as the crossover frequency is required.

Let's compute a real approximation of the complex matrix H_1 which corresponds to the the transfer function $G(j\omega_c)$ from forces applied by the actuators to the measured acceleration of the top platform evaluated at the frequency ω_c .

```
wc = 2*pi*10; % Decoupling frequency [rad/s]
H1 = evalfr(G, j*wc);
```

Matlab

The real approximation is computed as follows:

```
Matlab
D = pinv(real(H1'*H1));
H1 = pinv(D*real(H1'*diag(exp(j*angle(diag(H1*D*H1.'))/2))));
```

Table 1.1: Real approximate of G at the decoupling frequency ω_c

0.0092	-0.0039	0.0039
-0.0039	0.0048	0.00028
-0.004	0.0038	-0.0038
8.4e-09	0.0025	0.0025

Now, the Singular Value Decomposition of H_1 is performed:

$$H_1 = U\Sigma V^H$$

```
Matlab
[U,S,V] = svd(H1);
```

Table 1.2: U matrix

-0.78	0.26	-0.53	-0.2
0.4	0.61	-0.04	-0.68
0.48	-0.14	-0.85	0.2
0.03	0.73	0.06	0.68

Table 1.3: V matrix

-0.79	0.11	-0.6
0.51	0.67	-0.54
-0.35	0.73	0.59

The obtained matrices U and V are used to decouple the system as shown in Figure 1.7.

The decoupled plant is then:

$$\mathbf{G}_{SVD}(s) = U^{-1}\mathbf{G}(s)V^{-H}$$

```
Matlab
Gsvd = inv(U)*G*inv(V');
```

```
Results
size(Gsvd)
State-space model with 4 outputs, 3 inputs, and 6 states.
```

The 4th output (corresponding to the null singular value) is discarded, and we only keep the 3×3 plant:

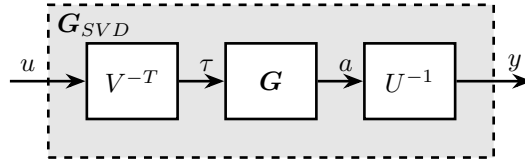


Figure 1.7: Decoupled plant G_{SVD} using the Singular Value Decomposition

```
Gsvd = Gsvd(1:3, 1:3);
```

The diagonal and off-diagonal elements of the “SVD” plant are shown in Figure 1.8.

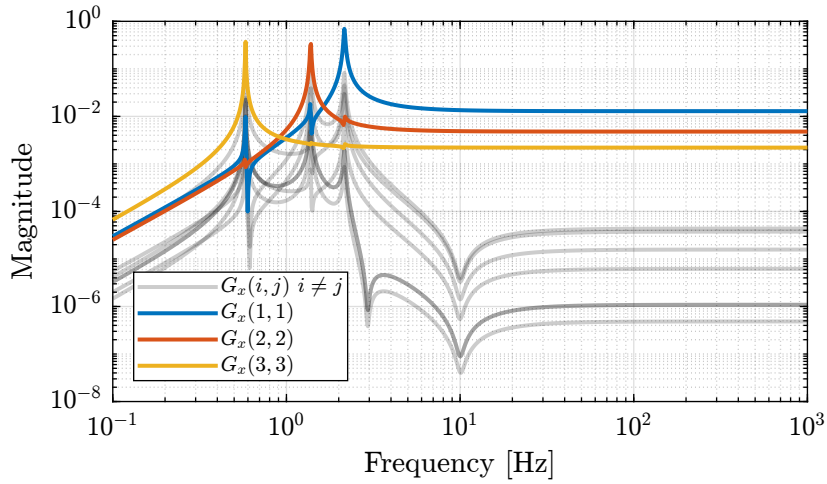


Figure 1.8: Diagonal and off-diagonal elements of G_{svd}

1.6 Verification of the decoupling using the “Gershgorin Radii”

The “Gershgorin Radii” is computed for the coupled plant $G(s)$, for the “Jacobian plant” $G_x(s)$ and the “SVD Decoupled Plant” $G_{SVD}(s)$:

The “Gershgorin Radii” of a matrix S is defined by:

$$\zeta_i(j\omega) = \frac{\sum_{j \neq i} |S_{ij}(j\omega)|}{|S_{ii}(j\omega)|}$$

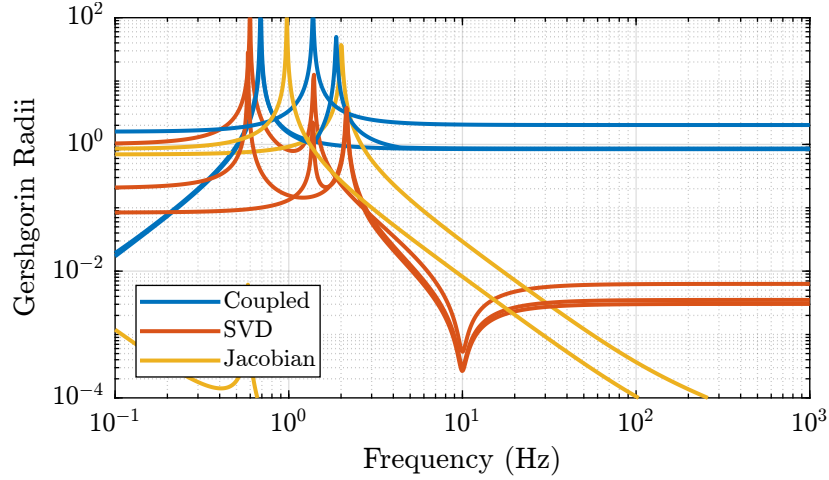


Figure 1.9: Gershgorin Radii of the Coupled and Decoupled plants

1.7 Verification of the decoupling using the “Relative Gain Array”

The relative gain array (RGA) is defined as:

$$\Lambda(G(s)) = G(s) \times (G(s)^{-1})^T \quad (1.5)$$

where \times denotes an element by element multiplication and $G(s)$ is an $n \times n$ square transfer matrix.

The obtained RGA elements are shown in Figure 1.10.

The RGA-number is also a measure of diagonal dominance:

$$\text{RGA-number} = \|\Lambda(G) - I\|_{\text{sum}} \quad (1.6)$$

1.8 Obtained Decoupled Plants

The bode plot of the diagonal and off-diagonal elements of G_{SVD} are shown in Figure 1.12.

Similarly, the bode plots of the diagonal elements and off-diagonal elements of the decoupled plant $G_x(s)$ using the Jacobian are shown in Figure 1.13.

1.9 Diagonal Controller

The control diagram for the centralized control is shown in Figure 1.14.

The controller K_c is “working” in an cartesian frame. The Jacobian is used to convert forces in the cartesian frame to forces applied by the actuators.

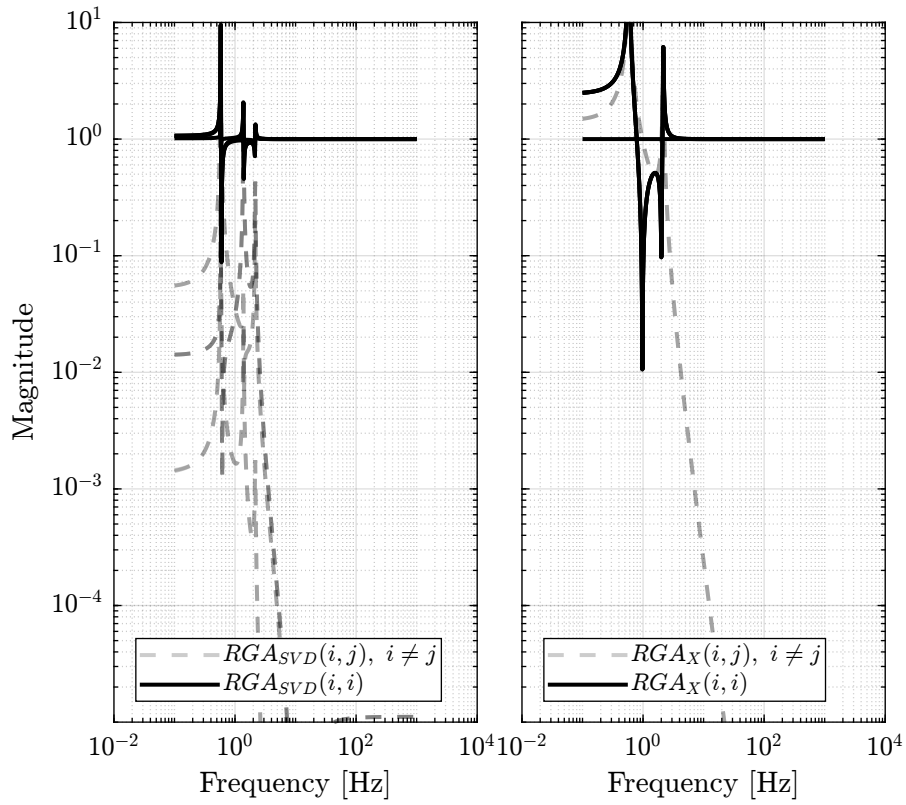


Figure 1.10: Obtained norm of RGA elements for the SVD decoupled plant and the Jacobian decoupled plant

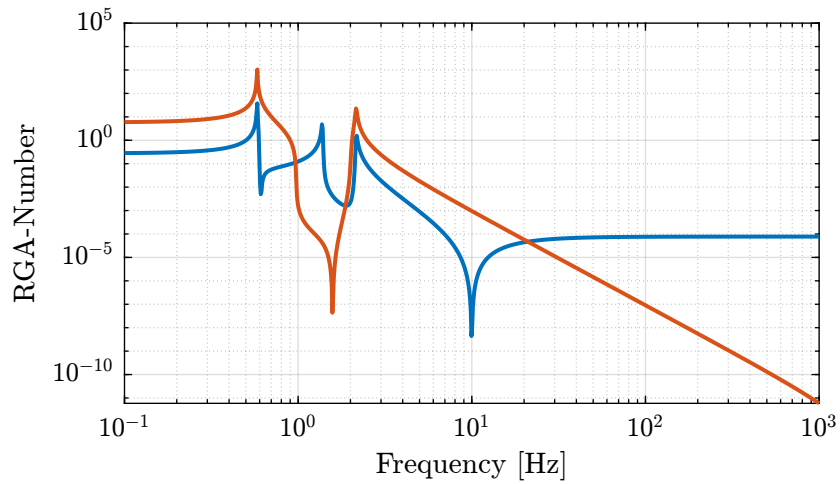


Figure 1.11: RGA-Number for the Gravimeter

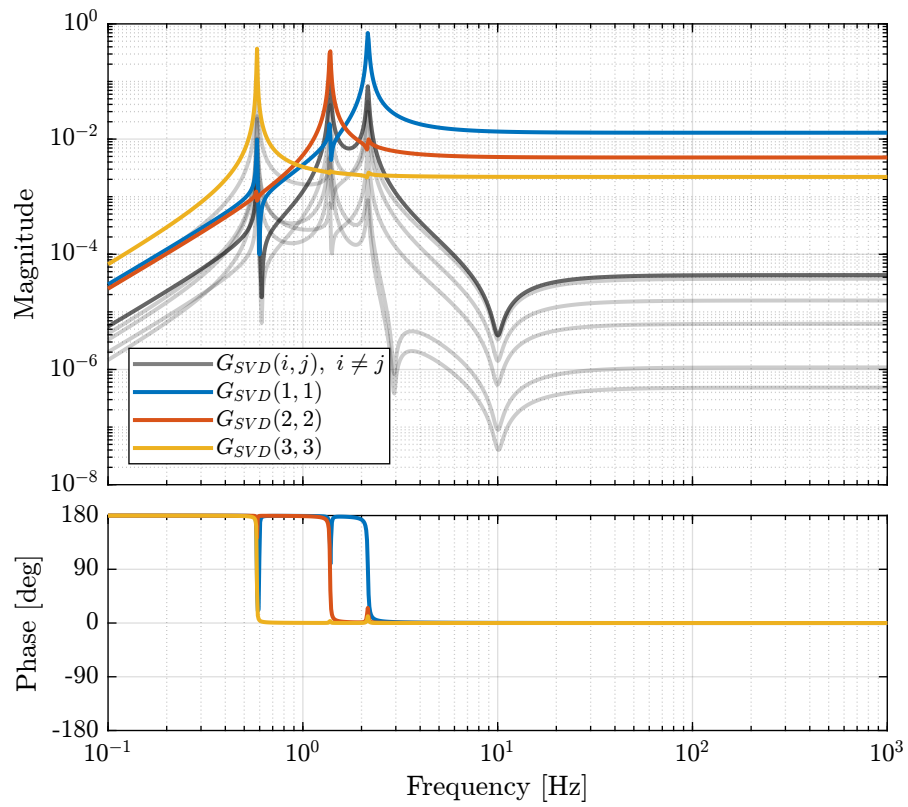


Figure 1.12: Decoupled Plant using SVD

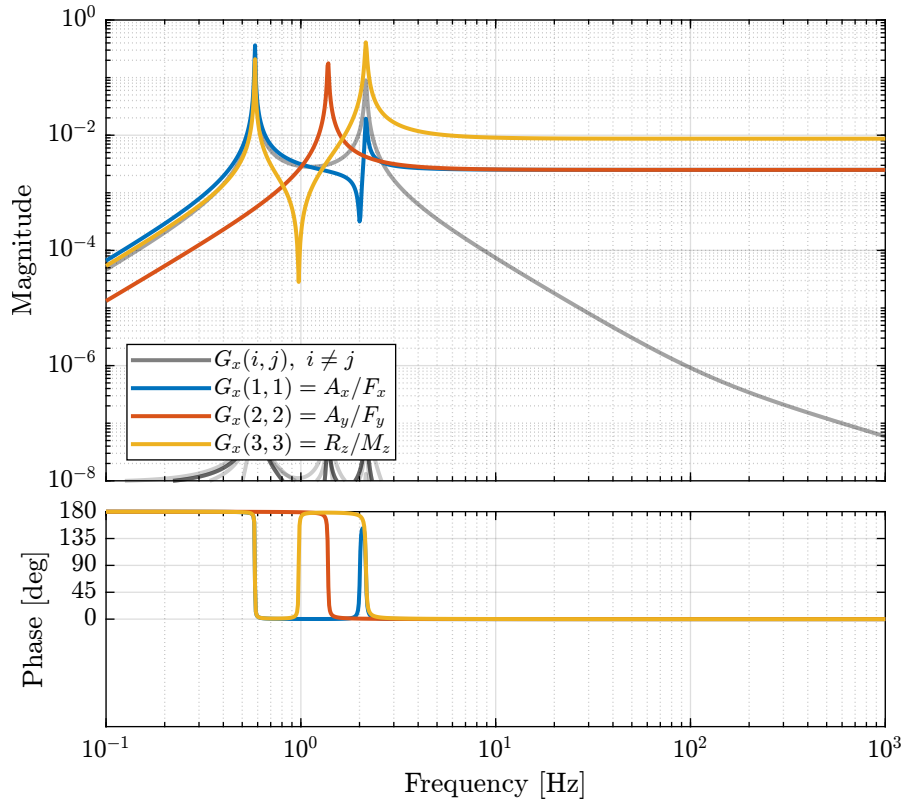


Figure 1.13: Gravimeter Platform Plant from forces (resp. torques) applied by the legs to the acceleration (resp. angular acceleration) of the platform as well as all the coupling terms between the two (non-diagonal terms of the transfer function matrix)

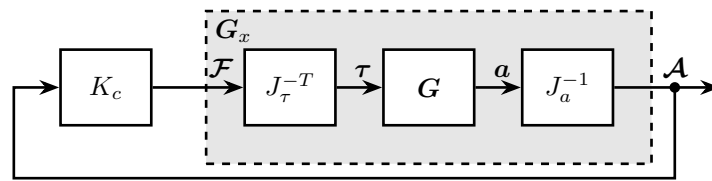


Figure 1.14: Control Diagram for the Centralized control

The SVD control architecture is shown in Figure 1.15. The matrices U and V are used to decoupled the plant G .

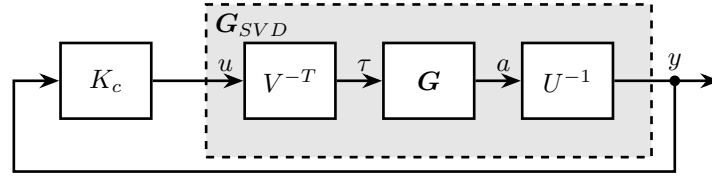


Figure 1.15: Control Diagram for the SVD control

We choose the controller to be a low pass filter:

$$K_c(s) = \frac{G_0}{1 + \frac{s}{\omega_0}}$$

G_0 is tuned such that the crossover frequency corresponding to the diagonal terms of the loop gain is equal to ω_c

```
Matlab
wc = 2*pi*10; % Crossover Frequency [rad/s]
w0 = 2*pi*0.1; % Controller Pole [rad/s]
```

```
Matlab
K_cen = diag(1./diag(abs(evalfr(Gx, j*wc))))*(1/abs(evalfr(1/(1 + s/w0), j*wc)))/(1 + s/w0);
L_cen = K_cen*Gx;
```

```
Matlab
K_svd = diag(1./diag(abs(evalfr(Gsvd, j*wc))))*(1/abs(evalfr(1/(1 + s/w0), j*wc)))/(1 + s/w0);
L_svd = K_svd*Gsvd;
U_inv = inv(U);
```

The obtained diagonal elements of the loop gains are shown in Figure 1.16.

1.10 Closed-Loop system Performances

Now the system is identified again with additional inputs and outputs:

- x , y and R_z ground motion
- x , y and R_z acceleration of the payload.

```
Matlab
%% Name of the Simulink File
mdl = 'gravimeter';

%% Input/Output definition
clear io; io_i = 1;
io(io_i) = linio([mdl, '/Dx'], 1, 'openinput'); io_i = io_i + 1;
io(io_i) = linio([mdl, '/Dy'], 1, 'openinput'); io_i = io_i + 1;
io(io_i) = linio([mdl, '/Rz'], 1, 'openinput'); io_i = io_i + 1;
```

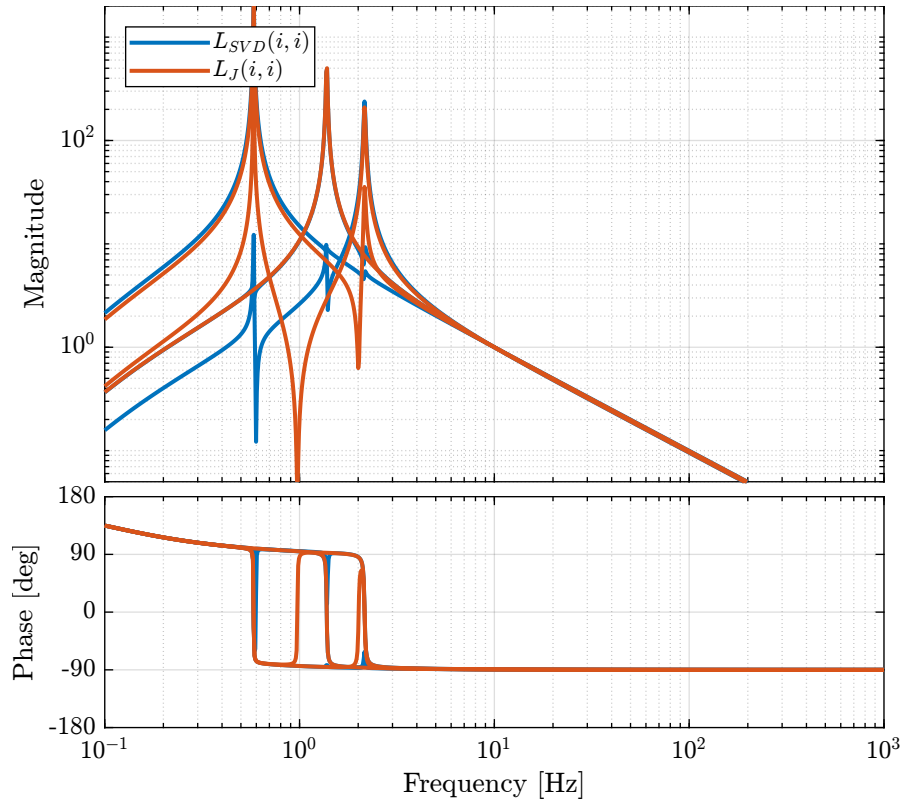



Figure 1.16: Comparison of the diagonal elements of the loop gains for the SVD control architecture and the Jacobian one

```

io(io_i) = linio([mdl, '/F1'], 1, 'openinput'); io_i = io_i + 1;
io(io_i) = linio([mdl, '/F2'], 1, 'openinput'); io_i = io_i + 1;
io(io_i) = linio([mdl, '/F3'], 1, 'openinput'); io_i = io_i + 1;
io(io_i) = linio([mdl, '/Abs_Motion'], 1, 'openoutput'); io_i = io_i + 1;
io(io_i) = linio([mdl, '/Abs_Motion'], 2, 'openoutput'); io_i = io_i + 1;
io(io_i) = linio([mdl, '/Abs_Motion'], 3, 'openoutput'); io_i = io_i + 1;
io(io_i) = linio([mdl, '/Acc_side'], 1, 'openoutput'); io_i = io_i + 1;
io(io_i) = linio([mdl, '/Acc_side'], 2, 'openoutput'); io_i = io_i + 1;
io(io_i) = linio([mdl, '/Acc_top'], 1, 'openoutput'); io_i = io_i + 1;
io(io_i) = linio([mdl, '/Acc_top'], 2, 'openoutput'); io_i = io_i + 1;

G = linearize(mdl, io);
G.InputName = {'Dx', 'Dy', 'Rz', 'F1', 'F2', 'F3'};
G.OutputName = {'Ax', 'Ay', 'Arz', 'Ax1', 'Ay1', 'Ax2', 'Ay2'};

```

The loop is closed using the developed controllers.

```

_____ Matlab _____
G_cen = lft(G, -pinv(Jt)*K_cen*pinv(Ja));
G_svd = lft(G, -inv(V)*K_svd*U_inv(1:3, :));

```

Let's first verify the stability of the closed-loop systems:

```

_____ Matlab _____
isstable(G_cen)

```

```

_____ Results _____
ans =
logical
1

```

```

_____ Matlab _____
isstable(G_svd)

```

```

_____ Results _____
ans =
logical
1

```

The obtained transmissibility in Open-loop, for the centralized control as well as for the SVD control are shown in Figure 1.17.

1.11 Robustness to a change of actuator position

Let say we change the position of the actuators:

```

_____ Matlab _____
la = 1/2*0.7; % Position of Act. [m]
ha = h/2*0.7; % Position of Act. [m]

```

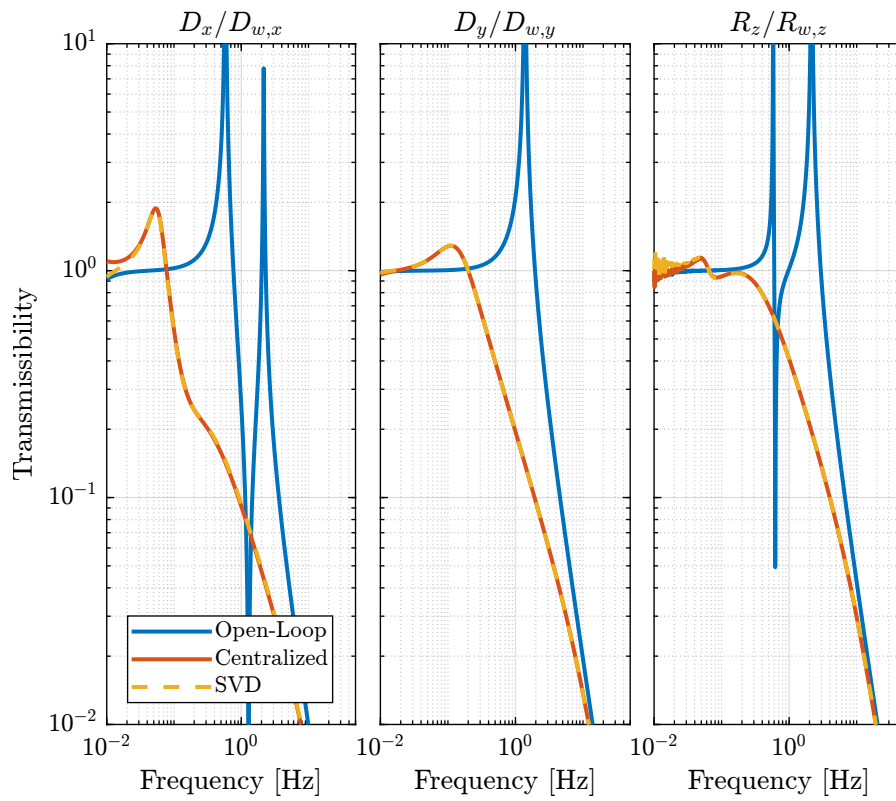


Figure 1.17: Obtained Transmissibility

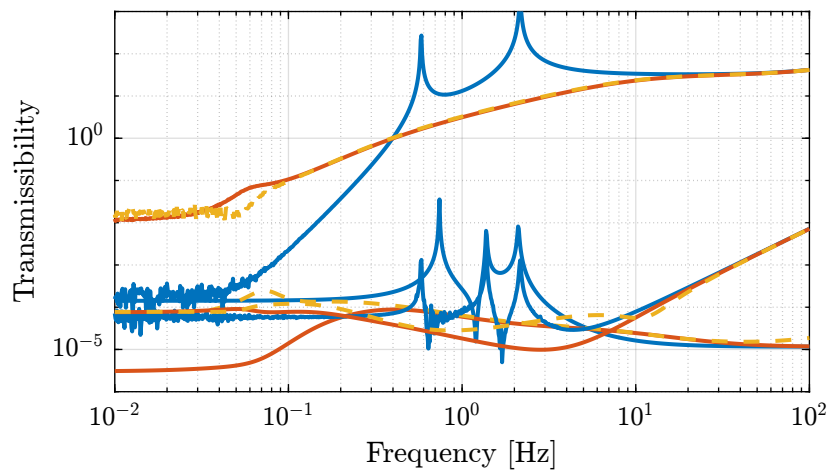


Figure 1.18: Obtain coupling terms of the transmissibility matrix

```

Matlab
%% Name of the Simulink File
mdl = 'gravimeter';

%% Input/Output definition
clear io; io_i = 1;
io(io_i) = linio([mdl, '/Dx'], 1, 'openinput'); io_i = io_i + 1;
io(io_i) = linio([mdl, '/Dy'], 1, 'openinput'); io_i = io_i + 1;
io(io_i) = linio([mdl, '/Rz'], 1, 'openinput'); io_i = io_i + 1;
io(io_i) = linio([mdl, '/F1'], 1, 'openinput'); io_i = io_i + 1;
io(io_i) = linio([mdl, '/F2'], 1, 'openinput'); io_i = io_i + 1;
io(io_i) = linio([mdl, '/F3'], 1, 'openinput'); io_i = io_i + 1;
io(io_i) = linio([mdl, '/Abs_Motion'], 1, 'openoutput'); io_i = io_i + 1;
io(io_i) = linio([mdl, '/Abs_Motion'], 2, 'openoutput'); io_i = io_i + 1;
io(io_i) = linio([mdl, '/Abs_Motion'], 3, 'openoutput'); io_i = io_i + 1;
io(io_i) = linio([mdl, '/Acc_side'], 1, 'openoutput'); io_i = io_i + 1;
io(io_i) = linio([mdl, '/Acc_side'], 2, 'openoutput'); io_i = io_i + 1;
io(io_i) = linio([mdl, '/Acc_top'], 1, 'openoutput'); io_i = io_i + 1;
io(io_i) = linio([mdl, '/Acc_top'], 2, 'openoutput'); io_i = io_i + 1;

G = linearize(mdl, io);
G.InputName = {'Dx', 'Dy', 'Rz', 'F1', 'F2', 'F3'};
G.OutputName = {'Ax', 'Ay', 'Arz', 'Ax1', 'Ay1', 'Ax2', 'Ay2'};

```

The loop is closed using the developed controllers.

```

Matlab
G_cen_b = lft(G, -pinv(Jt')*K_cen*pinv(Ja));
G_svd_b = lft(G, -inv(V')*K_svd*U_inv(1:3, :));

```

The new plant is computed, and the centralized and SVD control architectures are applied using the previously computed Jacobian matrices and U and V matrices.

The closed-loop system are still stable in both cases, and the obtained transmissibility are equivalent as shown in Figure 1.19.

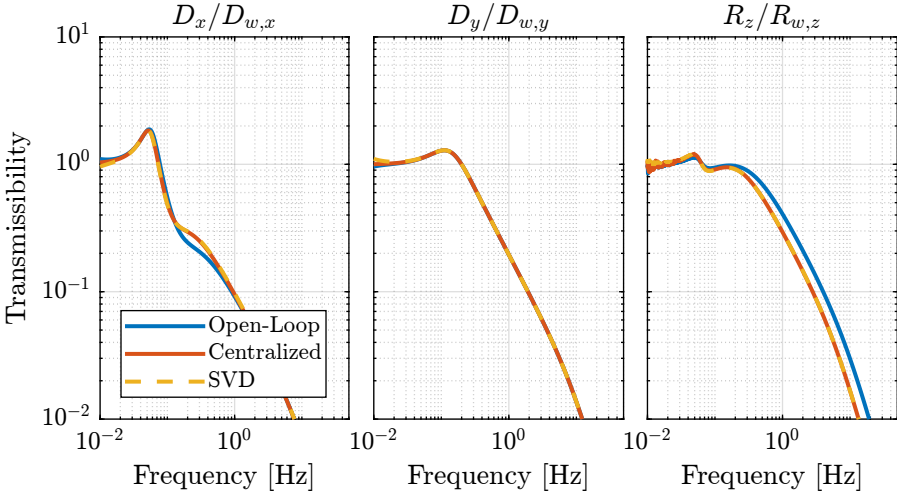


Figure 1.19: Transmissibility for the initial CL system and when the position of actuators are changed

1.12 Choice of the reference frame for Jacobian decoupling

If we want to decouple the system at low frequency (determined by the stiffness matrix), we have to compute the Jacobian at a point where the stiffness matrix is diagonal. A displacement (resp. rotation) of the mass at this particular point should induce a **pure** force (resp. torque) on the same point due to stiffnesses in the system. This can be verified by geometrical computations.

If we want to decouple the system at high frequency (determined by the mass matrix), we have to compute the Jacobians at the Center of Mass of the suspended solid. Similarly to the stiffness analysis, when considering only the inertia effects (neglecting the stiffnesses), a force (resp. torque) applied at this point (the center of mass) should induce a **pure** acceleration (resp. angular acceleration).

Ideally, we would like to have a decoupled mass matrix and stiffness matrix at the same time. To do so, the actuators (springs) should be positioned such that the stiffness matrix is diagonal when evaluated at the CoM of the solid.

1.12.1 Decoupling of the mass matrix

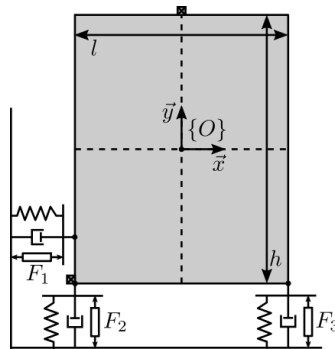


Figure 1.20: Choice of $\{O\}$ such that the Mass Matrix is Diagonal

```
Matlab
la = l/2; % Position of Act. [m]
ha = h/2; % Position of Act. [m]
```

```
Matlab
%% Name of the Simulink File
mdl = 'gravimeter';

%% Input/Output definition
clear io; io_i = 1;
io(io_i) = linio([mdl, '/F1'], 1, 'openinput'); io_i = io_i + 1;
io(io_i) = linio([mdl, '/F2'], 1, 'openinput'); io_i = io_i + 1;
io(io_i) = linio([mdl, '/F3'], 1, 'openinput'); io_i = io_i + 1;
io(io_i) = linio([mdl, '/Acc_side'], 1, 'openoutput'); io_i = io_i + 1;
io(io_i) = linio([mdl, '/Acc_side'], 2, 'openoutput'); io_i = io_i + 1;
io(io_i) = linio([mdl, '/Acc_top'], 1, 'openoutput'); io_i = io_i + 1;
io(io_i) = linio([mdl, '/Acc_top'], 2, 'openoutput'); io_i = io_i + 1;

G = linearize(mdl, io);
G.InputName = {'F1', 'F2', 'F3'};
G.OutputName = {'Ax1', 'Ay1', 'Ax2', 'Ay2'};
```

Decoupling at the CoM (Mass decoupled)

```

Matlab
JMa = [1 0 -h/2
       0 1  l/2
       0 1  0];

JMt = [1 0 -ha
       0 1  la
       0 1 -la];

GM = pinv(JMa)*G*pinv(JMt');
GM.InputName = {'Fx', 'Fy', 'Mz'};
GM.OutputName = {'Dx', 'Dy', 'Rz'};

```

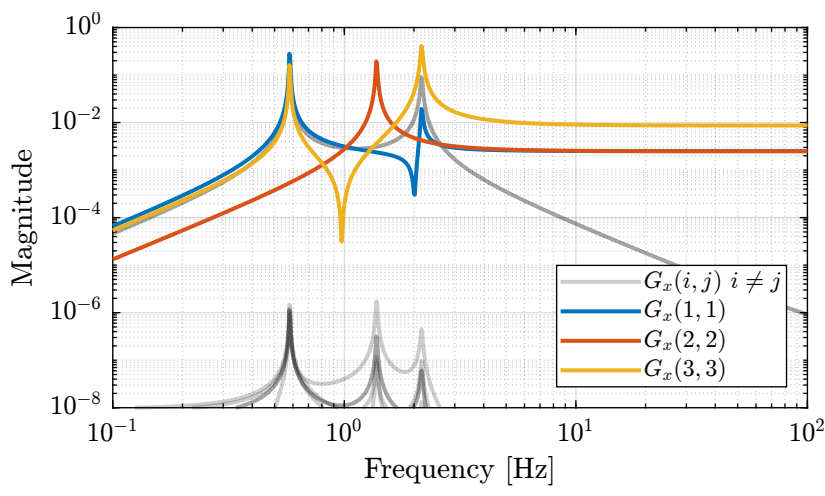


Figure 1.21: Diagonal and off-diagonal elements of the decoupled plant

1.12.2 Decoupling of the stiffness matrix

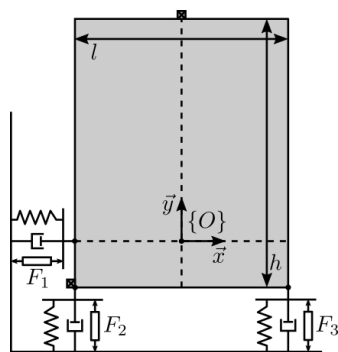


Figure 1.22: Choice of {O} such that the Stiffness Matrix is Diagonal

Decoupling at the point where K is diagonal ($x = 0, y = -h/2$ from the schematic {O} frame):

```

Matlab
JKa = [1 0 0
        0 1 -l/2
        1 0 -h
        0 1 0];

JKt = [1 0 0
        0 1 -la
        0 1 la];

```

And the plant G_x is computed:

```

Matlab
GK = pinv(JKa)*G*pinv(JKt');
GK.InputName = {'Fx', 'Fy', 'Mz'};
GK.OutputName = {'Dx', 'Dy', 'Rz'};

```

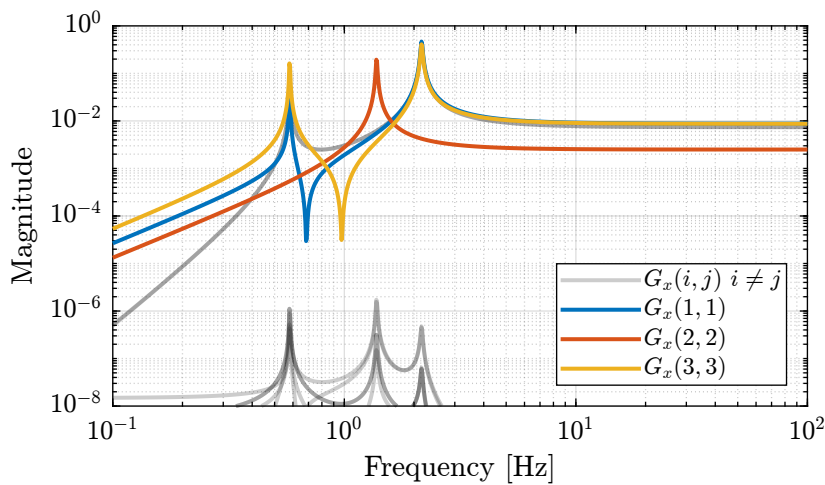


Figure 1.23: Diagonal and off-diagonal elements of the decoupled plant

1.12.3 Combined decoupling of the mass and stiffness matrices

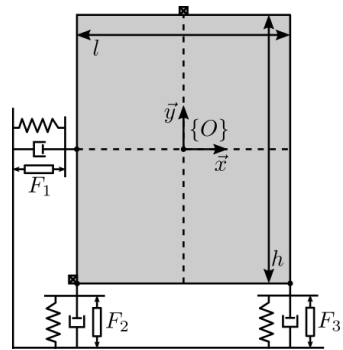


Figure 1.24: Ideal location of the actuators such that both the mass and stiffness matrices are diagonal

To do so, the actuator position should be modified

```

la = 1/2; % Position of Act. [m]
ha = 0; % Position of Act. [m]

```

```

%% Name of the Simulink File
mdl = 'gravimeter';

%% Input/Output definition
clear io; io_i = 1;
io(io_i) = linio([mdl, '/F1'], 1, 'openinput'); io_i = io_i + 1;
io(io_i) = linio([mdl, '/F2'], 1, 'openinput'); io_i = io_i + 1;
io(io_i) = linio([mdl, '/F3'], 1, 'openinput'); io_i = io_i + 1;
io(io_i) = linio([mdl, '/Acc_side'], 1, 'openoutput'); io_i = io_i + 1;
io(io_i) = linio([mdl, '/Acc_side'], 2, 'openoutput'); io_i = io_i + 1;
io(io_i) = linio([mdl, '/Acc_top'], 1, 'openoutput'); io_i = io_i + 1;
io(io_i) = linio([mdl, '/Acc_top'], 2, 'openoutput'); io_i = io_i + 1;

G = linearize(mdl, io);
G.InputName = {'F1', 'F2', 'F3'};
G.OutputName = {'Ax1', 'Ay1', 'Ax2', 'Ay2'};

```

```

JMa = [1 0 -h/2
        0 1 1/2
        1 0 h/2
        0 1 0];

JMt = [1 0 -ha
        0 1 la
        0 1 -la];

```

```

GKM = pinv(JMa)*G*pinv(JMt);
GKM.InputName = {'Fx', 'Fy', 'Mz'};
GKM.OutputName = {'Dx', 'Dy', 'Rz'};

```

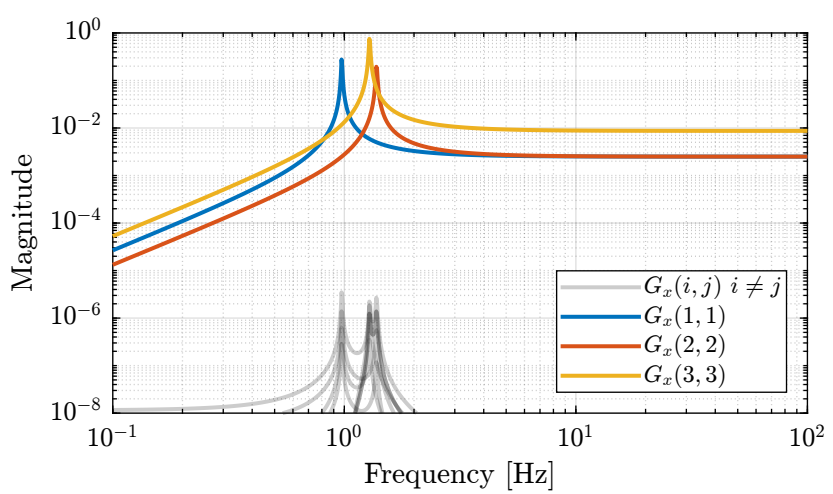


Figure 1.25: Diagonal and off-diagonal elements of the decoupled plant

1.12.4 Conclusion

Ideally, the mechanical system should be designed in order to have a decoupled stiffness matrix at the CoM of the solid.

If not the case, the system can either be decoupled as low frequency if the Jacobian are evaluated at a point where the stiffness matrix is decoupled. Or it can be decoupled at high frequency if the Jacobians are evaluated at the CoM.

1.13 SVD decoupling performances

As the SVD is applied on a **real approximation** of the plant dynamics at a frequency ω_0 , it is foreseen that the effectiveness of the decoupling depends on the validity of the real approximation.

Let's do the SVD decoupling on a plant that is mostly real (low damping) and one with a large imaginary part (larger damping).

Start with small damping, the obtained diagonal and off-diagonal terms are shown in Figure 1.26.

```
Matlab  
c = 2e1; % Actuator Damping [N/(m/s)]
```

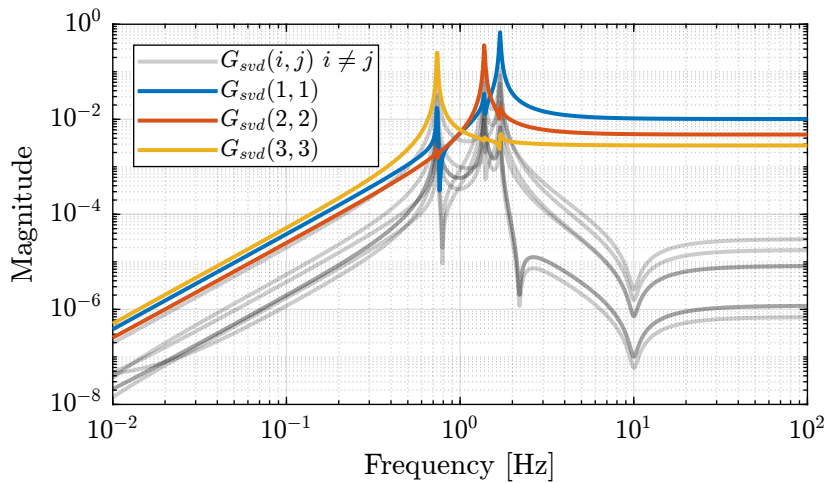


Figure 1.26: Diagonal and off-diagonal term when decoupling with SVD on the gravimeter with small damping

Now take a larger damping, the obtained diagonal and off-diagonal terms are shown in Figure 1.27.

```
Matlab  
c = 5e2; % Actuator Damping [N/(m/s)]
```

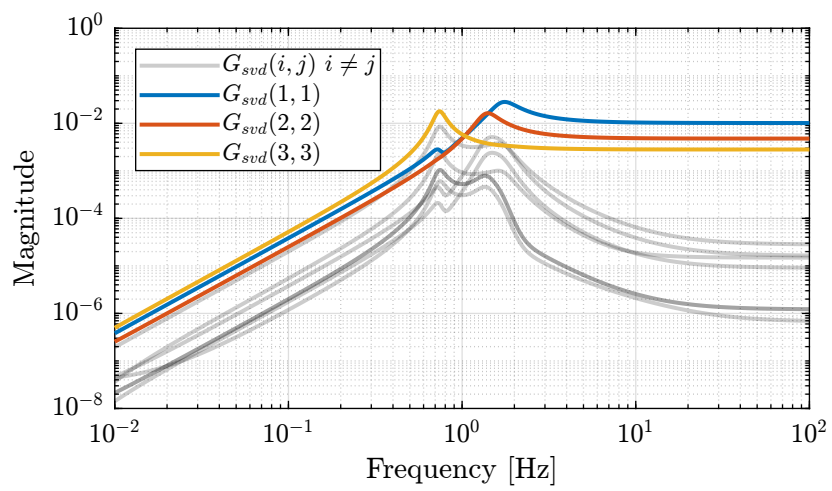


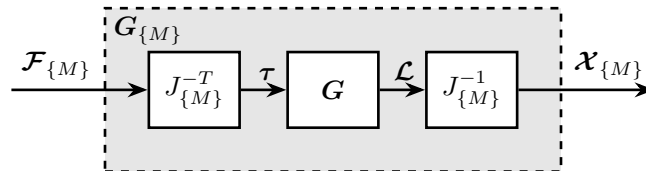
Figure 1.27: Diagonal and off-diagonal term when decoupling with SVD on the gravimeter with high damping

2 Parallel Manipulator with Collocated actuator/sensor pairs

In this section, we will see how the Jacobian matrix can be used to decouple a specific set of mechanical systems (described in Section 2.1).

The basic decoupling architecture is shown in Figure 2.1 where the Jacobian matrix is used to both compute the actuator forces from forces/torques that are to be applied in a specific defined frame, and to compute the displacement/rotation of the same mass from several sensors.

This is rapidly explained in Section 2.2.



Depending on the chosen frame, the Stiffness matrix in that particular frame can be computed. This is explained in Section 2.3.

Then three decoupling in three specific frames is studied:

- Section 2.4: control in the frame of the legs
- Section 2.5: control in a frame whose origin is at the center of mass of the payload
- Section 2.6: control in a frame whose origin is located at the “center of stiffness” of the system

Conclusions are drawn in Section 2.7.

2.1 Model

Let’s consider a parallel manipulator with several collocated actuator/sensors pairs.

System in Figure 2.1 will serve as an example.

We will note:

- b_i : location of the joints on the top platform

- \hat{s}_i : unit vector corresponding to the struts direction
- k_i : stiffness of the struts
- τ_i : actuator forces
- O_M : center of mass of the solid body
- \mathcal{L}_i : relative displacement of the struts

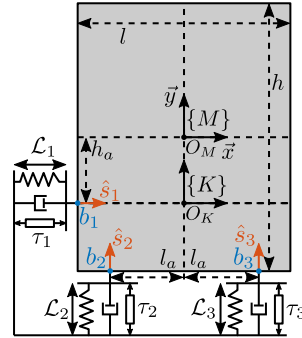


Figure 2.1: Model of the gravimeter

The parameters are defined as follows:

```

----- Matlab -----
l = 1.0; % Length of the mass [m]
h = 2*1.7; % Height of the mass [m]

la = l/2; % Position of Act. [m]
ha = h/2; % Position of Act. [m]

m = 400; % Mass [kg]
I = 115; % Inertia [kg m^2]

c1 = 2e1; % Actuator Damping [N/(m/s)]
c2 = 2e1; % Actuator Damping [N/(m/s)]
c3 = 2e1; % Actuator Damping [N/(m/s)]

k1 = 15e3; % Actuator Stiffness [N/m]
k2 = 15e3; % Actuator Stiffness [N/m]
k3 = 15e3; % Actuator Stiffness [N/m]

```

Let's express ${}^M b_i$ and \hat{s}_i :

$${}^M b_1 = [-l/2, -h_a] \quad (2.1)$$

$${}^M b_2 = [-la, -h/2] \quad (2.2)$$

$${}^M b_3 = [la, -h/2] \quad (2.3)$$

$$\hat{s}_1 = [1, 0] \quad (2.4)$$

$$\hat{s}_2 = [0, 1] \quad (2.5)$$

$$\hat{s}_3 = [0, 1] \quad (2.6)$$

```

Matlab
s1 = [1;0];
s2 = [0;1];
s3 = [0;1];

Mb1 = [-1/2;-ha];
Mb2 = [-1a; -h/2];
Mb3 = [ 1a; -h/2];

```

Frame $\{K\}$ is chosen such that the stiffness matrix is diagonal (explained in Section 4).

The positions ${}^K b_i$ are then:

$${}^K b_1 = [-l/2, 0] \quad (2.7)$$

$${}^K b_2 = [-la, -h/2 + h_a] \quad (2.8)$$

$${}^K b_3 = [la, -h/2 + h_a] \quad (2.9)$$

```

Matlab
Kb1 = [-1/2; 0];
Kb2 = [-1a; -h/2+ha];
Kb3 = [ 1a; -h/2+ha];

```

2.2 The Jacobian Matrix

Let's note:

- \mathcal{L} the vector of actuator displacement:

$$\mathcal{L} = \begin{bmatrix} \mathcal{L}_1 \\ \mathcal{L}_2 \\ \mathcal{L}_3 \end{bmatrix} \quad (2.10)$$

- $\boldsymbol{\tau}$ the vector of actuator forces:

$$\boldsymbol{\tau} = \begin{bmatrix} \tau_1 \\ \tau_2 \\ \tau_3 \end{bmatrix} \quad (2.11)$$

- $\mathcal{F}_{\{O\}}$ the vector of forces/torques applied on the payload on expressed in frame $\{O\}$:

$$\mathcal{F}_{\{O\}} = \begin{bmatrix} \mathcal{F}_{\{O\},x} \\ \mathcal{F}_{\{O\},y} \\ \mathcal{M}_{\{O\},z} \end{bmatrix} \quad (2.12)$$

- $\boldsymbol{\mathcal{X}}_{\{O\}}$ the vector of displacement of the payload with respect to frame $\{O\}$:

$$\boldsymbol{\mathcal{X}}_{\{O\}} = \begin{bmatrix} \mathcal{X}_{\{O\},x} \\ \mathcal{X}_{\{O\},y} \\ \mathcal{X}_{\{O\},R_z} \end{bmatrix} \quad (2.13)$$

The Jacobian matrix can be used to:

- Convert joints velocity $\dot{\mathcal{L}}$ to payload velocity and angular velocity $\dot{\mathcal{X}}_{\{O\}}$:

$$\dot{\mathcal{X}}_{\{O\}} = J_{\{O\}} \dot{\mathcal{L}}$$

- Convert actuators forces $\boldsymbol{\tau}$ to forces/torque applied on the payload $\mathcal{F}_{\{O\}}$:

$$\mathcal{F}_{\{O\}} = J_{\{O\}}^T \boldsymbol{\tau}$$

with $\{O\}$ any chosen frame.

If we consider **small** displacements, we have an approximate relation that links the displacements (instead of velocities):

$$\boldsymbol{x}_{\{M\}} = J_{\{M\}} \boldsymbol{\mathcal{L}} \quad (2.14)$$

The Jacobian can be computed as follows:

$$J_{\{O\}} = \begin{bmatrix} {}^O \hat{s}_1^T & {}^O b_{1,x} {}^O \hat{s}_{1,y} - {}^O b_{1,x} {}^O \hat{s}_{1,y} \\ {}^O \hat{s}_2^T & {}^O b_{2,x} {}^O \hat{s}_{2,y} - {}^O b_{2,x} {}^O \hat{s}_{2,y} \\ \vdots & \vdots \\ {}^O \hat{s}_n^T & {}^O b_{n,x} {}^O \hat{s}_{n,y} - {}^O b_{n,x} {}^O \hat{s}_{n,y} \end{bmatrix} \quad (2.15)$$

Let's compute the Jacobian matrix in frame $\{M\}$ and $\{K\}$:

```
Matlab
Jm = [s1', Mb1(1)*s1(2)-Mb1(2)*s1(1);
      s2', Mb2(1)*s2(2)-Mb2(2)*s2(1);
      s3', Mb3(1)*s3(2)-Mb3(2)*s3(1)];
```

Table 2.1: Jacobian Matrix $J_{\{M\}}$

1	0	1.7
0	1	-0.5
0	1	0.5

```
Matlab
Jk = [s1', Kb1(1)*s1(2)-Kb1(2)*s1(1);
      s2', Kb2(1)*s2(2)-Kb2(2)*s2(1);
      s3', Kb3(1)*s3(2)-Kb3(2)*s3(1)];
```

Table 2.2: Jacobian Matrix $J_{\{K\}}$

1	0	0
0	1	-0.5
0	1	0.5

In the frame $\{M\}$, the Jacobian is:

$$J_{\{M\}} = \begin{bmatrix} 1 & 0 & h_a \\ 0 & 1 & -l_a \\ 0 & 1 & l_a \end{bmatrix} \quad (2.16)$$

And in frame $\{K\}$, the Jacobian is:

$$J_{\{K\}} = \begin{bmatrix} 1 & 0 & 0 \\ 0 & 1 & -l_a \\ 0 & 1 & l_a \end{bmatrix} \quad (2.17)$$

2.3 The Stiffness Matrix

For a parallel manipulator, the stiffness matrix expressed in a frame $\{O\}$ is:

$$K_{\{O\}} = J_{\{O\}}^T \mathcal{K} J_{\{O\}} \quad (2.18)$$

where:

- $J_{\{O\}}$ is the Jacobian matrix expressed in frame $\{O\}$
- \mathcal{K} is a diagonal matrix with the strut stiffnesses on the diagonal

$$\mathcal{K} = \begin{bmatrix} k_1 & & & 0 \\ & k_2 & & \\ & & \ddots & \\ 0 & & & k_n \end{bmatrix} \quad (2.19)$$

We have the same thing for the damping matrix.

```

Matlab
Kr = diag([k1,k2,k3]);
Cr = diag([c1,c2,c3]);

```

2.4 Equations of motion - Frame of the legs

Applying the second Newton's law on the system in Figure 2.1 at its center of mass O_M , we obtain:

$$(M_{\{M\}} s^2 + K_{\{M\}}) \mathcal{X}_{\{M\}} = \mathcal{F}_{\{M\}} \quad (2.20)$$

with:

- $M_{\{M\}}$ is the mass matrix expressed in $\{M\}$:

$$M_{\{M\}} = \begin{bmatrix} m & 0 & 0 \\ 0 & m & 0 \\ 0 & 0 & I \end{bmatrix}$$

- $K_{\{M\}}$ is the stiffness matrix expressed in $\{M\}$:

$$K_{\{M\}} = J_{\{M\}}^T \mathcal{K} J_{\{M\}}$$

- $\mathcal{X}_{\{M\}}$ are displacements/rotations of the mass x, y, R_z expressed in the frame $\{M\}$

- $\mathcal{F}_{\{M\}}$ are forces/torques $\mathcal{F}_x, \mathcal{F}_y, \mathcal{M}_z$ applied at the origin of $\{M\}$

Let's use the Jacobian matrix to compute the equations in terms of actuator forces $\boldsymbol{\tau}$ and strut displacement $\boldsymbol{\mathcal{L}}$:

$$(M_{\{M\}}s^2 + K_{\{M\}}) J_{\{M\}}^{-1} \boldsymbol{\mathcal{L}} = J_{\{M\}}^T \boldsymbol{\tau} \quad (2.21)$$

And we obtain:

$$\left(J_{\{M\}}^{-T} M_{\{M\}} J_{\{M\}}^{-1} s^2 + \mathcal{K} \right) \boldsymbol{\mathcal{L}} = \boldsymbol{\tau} \quad (2.22)$$

The transfer function $\mathbf{G}(s)$ from $\boldsymbol{\tau}$ to $\boldsymbol{\mathcal{L}}$ is:

$$\mathbf{G}(s) = \left(J_{\{M\}}^{-T} M_{\{M\}} J_{\{M\}}^{-1} s^2 + \mathcal{K} \right)^{-1} \quad (2.23)$$

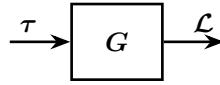


Figure 2.2: Block diagram of the transfer function from $\boldsymbol{\tau}$ to $\boldsymbol{\mathcal{L}}$

```
Matlab
%% Mass Matrix in frame {M}
Mm = diag([m,m,1]);
```

Let's note the mass matrix in the frame of the legs:

$$M_{\{L\}} = J_{\{M\}}^{-T} M_{\{M\}} J_{\{M\}}^{-1} \quad (2.24)$$

```
Matlab
%% Mass Matrix in the frame of the struts
Ml = inv(Jm')*Mm*inv(Jm);
```

Table 2.3: $M_{\{L\}}$

400	680	-680
680	1371	-1171
-680	-1171	1371

As we can see, the Stiffness matrix in the frame of the legs is diagonal. This means the plant dynamics will be diagonal at low frequency.

```
Matlab
Kl = diag([k1, k2, k3]);
```

```
Matlab
Cl = diag([c1, c2, c3]);
```

The transfer function $\mathbf{G}(s)$ from $\boldsymbol{\tau}$ to $\boldsymbol{\mathcal{L}}$ is defined below and its magnitude is shown in Figure 2.3.

Table 2.4: $K_{\{L\}} = \mathcal{K}$

15000	0	0
0	15000	0
0	0	15000

```
G1 = inv(M1*s^2 + C1*s + K1);
```

We can indeed see that the system is well decoupled at low frequency.

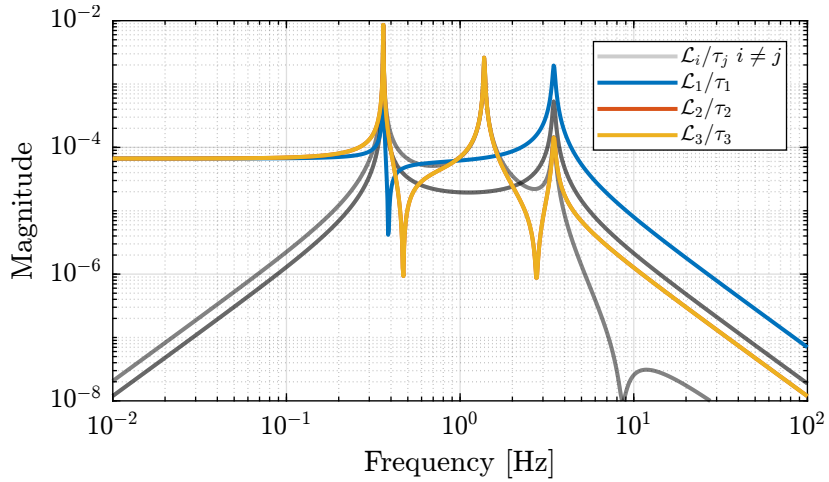


Figure 2.3: Dynamics from τ to \mathcal{L}

2.5 Equations of motion - “Center of mass” $\{M\}$

The equations of motion expressed in frame $\{M\}$ are:

$$(M_{\{M\}}s^2 + K_{\{M\}}) \mathcal{X}_{\{M\}} = \mathcal{F}_{\{M\}} \quad (2.25)$$

And the plant from $\mathcal{F}_{\{M\}}$ to $\mathcal{X}_{\{M\}}$ is:

$$\mathcal{G}_{\{X\}} = (M_{\{M\}}s^2 + K_{\{M\}})^{-1} \quad (2.26)$$

with:

- $M_{\{M\}}$ is the mass matrix expressed in $\{M\}$:

$$M_{\{M\}} = \begin{bmatrix} m & 0 & 0 \\ 0 & m & 0 \\ 0 & 0 & I \end{bmatrix}$$

- $K_{\{M\}}$ is the stiffness matrix expressed in $\{M\}$:

$$K_{\{M\}} = J_{\{M\}}^T \mathcal{K} J_{\{M\}}$$

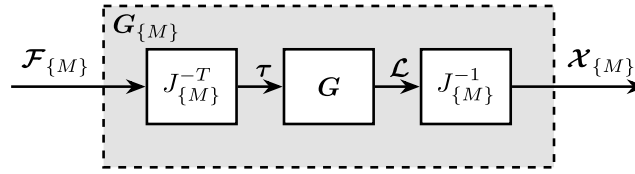


Figure 2.4: Block diagram of the transfer function from $\mathcal{F}_{\{M\}}$ to $\mathcal{X}_{\{M\}}$

```
Matlab
%% Mass Matrix in frame {M}
Mm = diag([m, m, 1]);
```

Table 2.5: Mass matrix expressed in $\{M\}$: $M_{\{M\}}$

400	0	0
0	400	0
0	0	115

```
Matlab
%% Stiffness Matrix in frame {M}
Km = Jm'*Kr*Jm;
```

Table 2.6: Stiffness matrix expressed in $\{M\}$: $K_{\{M\}}$

15000	0	25500
0	30000	0
25500	0	50850

```
Matlab
%% Damping Matrix in frame {M}
Cm = Jm'*Cr*Jm;
```

The plant from $\mathcal{F}_{\{M\}}$ to $\mathcal{X}_{\{M\}}$ is defined below and its magnitude is shown in Figure 2.5.

```
Matlab
%% Plant in frame {M}
Gm = inv(Mm*s^2 + Cm*s + Km);
```

2.6 Equations of motion - “Center of stiffness” $\{K\}$

Let’s now express the transfer function from $\mathcal{F}_{\{K\}}$ to $\mathcal{X}_{\{K\}}$. We start from:

$$(M_{\{M\}}s^2 + K_{\{M\}}) J_{\{M\}}^{-1} \mathcal{L} = J_{\{M\}}^T \tau \quad (2.27)$$

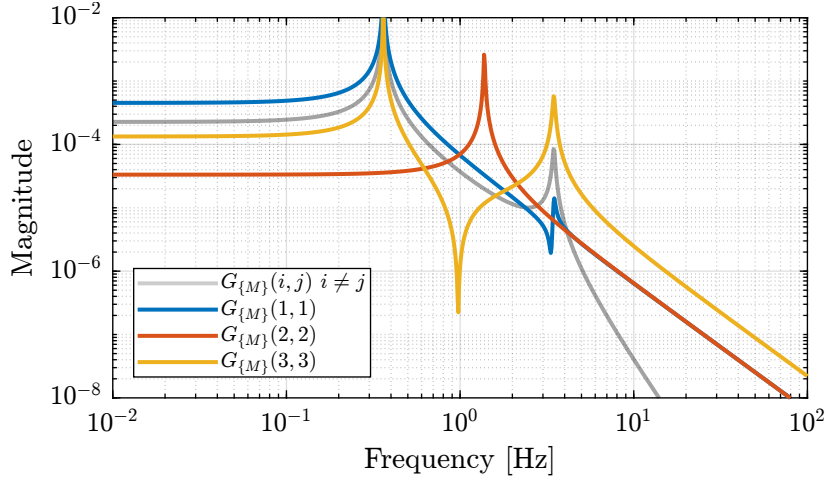


Figure 2.5: Dynamics from $\mathcal{F}_{\{M\}}$ to $\mathcal{X}_{\{M\}}$

And we make use of the Jacobian $J_{\{K\}}$ to obtain:

$$(M_{\{M\}}s^2 + K_{\{M\}}) J_{\{M\}}^{-1} J_{\{K\}} \mathcal{X}_{\{K\}} = J_{\{M\}}^T J_{\{K\}}^{-T} \mathcal{F}_{\{K\}} \quad (2.28)$$

And finally:

$$\left(J_{\{K\}}^T J_{\{M\}}^{-T} M_{\{M\}} J_{\{M\}}^{-1} J_{\{K\}} s^2 + J_{\{K\}}^T \mathcal{K} J_{\{K\}} \right) \mathcal{X}_{\{K\}} = \mathcal{F}_{\{K\}} \quad (2.29)$$

The transfer function from $\mathcal{F}_{\{K\}}$ to $\mathcal{X}_{\{K\}}$ is then:

$$\mathbf{G}_{\{K\}} = \left(J_{\{K\}}^T J_{\{M\}}^{-T} M_{\{M\}} J_{\{M\}}^{-1} J_{\{K\}} s^2 + J_{\{K\}}^T \mathcal{K} J_{\{K\}} \right)^{-1} \quad (2.30)$$

The frame $\{K\}$ has been chosen such that $J_{\{K\}}^T \mathcal{K} J_{\{K\}}$ is diagonal.

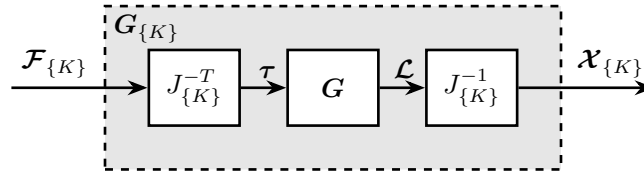


Figure 2.6: Block diagram of the transfer function from $\mathcal{F}_{\{K\}}$ to $\mathcal{X}_{\{K\}}$

```
Mk = Jk'*inv(Jm)*Mm*inv(Jm)*Jk;
```

Matlab

Table 2.7: Mass matrix expressed in $\{K\}$: $M_{\{K\}}$

400	0	-680
0	400	0
-680	0	1271

```
Kk = Jk'*Kk*Jk;
```

Matlab

Table 2.8: Stiffness matrix expressed in $\{K\}$: $K_{\{K\}}$

15000	0	0
0	30000	0
0	0	7500

The plant from $\mathcal{F}_{\{K\}}$ to $\mathcal{X}_{\{K\}}$ is defined below and its magnitude is shown in Figure 2.7.

```
Gk = inv(Mk*s^2 + Ck*s + Kk);
```

Matlab

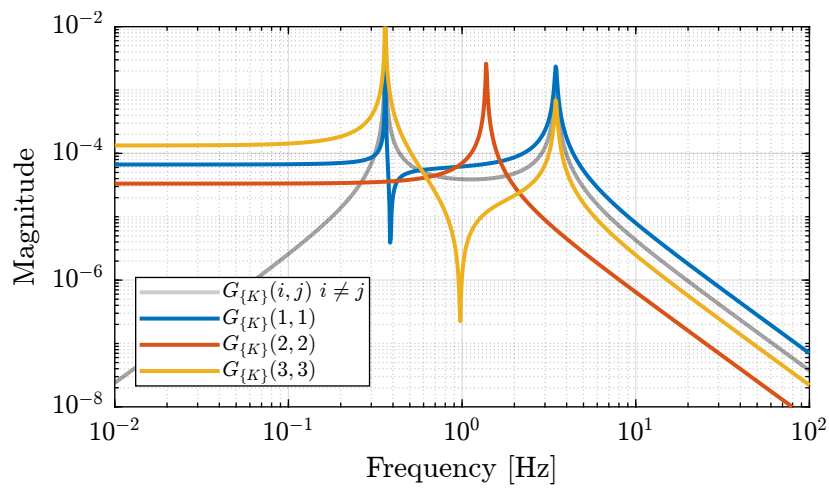


Figure 2.7: Dynamics from $\mathcal{F}_{\{K\}}$ to $\mathcal{X}_{\{K\}}$

2.7 Conclusion

3 SVD / Jacobian / Model decoupling comparison

The goal of this section is to compare the use of several methods for the decoupling of parallel manipulators.

It is structured as follow:

- Section 3.1: the model used to compare/test decoupling strategies is presented
- Section 3.2: decoupling using Jacobian matrices is presented
- Section 3.3: modal decoupling is presented
- Section 3.4: SVD decoupling is presented
- Section 3.5: the three decoupling methods are applied on the test model and compared
- Section 3.7: conclusions are drawn on the three decoupling methods

3.1 Test Model

Let's consider a parallel manipulator with several collocated actuator/sensors pairs.

System in Figure 3.1 will serve as an example.

We will note:

- b_i : location of the joints on the top platform
- \hat{s}_i : unit vector corresponding to the struts direction
- k_i : stiffness of the struts
- τ_i : actuator forces
- O_M : center of mass of the solid body
- \mathcal{L}_i : relative displacement of the struts

The parameters are defined below.

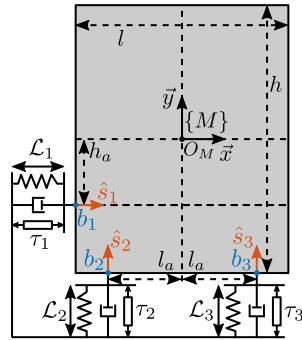


Figure 3.1: Model use to compare decoupling techniques

```

Matlab
%% System parameters
l = 1.0; % Length of the mass [m]
h = 2*1.7; % Height of the mass [m]

la = l/2; % Position of Act. [m]
ha = h/2; % Position of Act. [m]

m = 400; % Mass [kg]
I = 115; % Inertia [kg m^2]

%% Actuator Damping [N/(m/s)]
c1 = 2e1;
c2 = 2e1;
c3 = 2e1;

%% Actuator Stiffness [N/m]
k1 = 15e3;
k2 = 15e3;
k3 = 15e3;

%% Unit vectors of the actuators
s1 = [1;0];
s2 = [0;1];
s3 = [0;1];

%% Location of the joints
Mb1 = [-l/2;-ha];
Mb2 = [-la; -h/2];
Mb3 = [ la; -h/2];

%% Jacobian matrix
J = [s1', Mb1(1)*s1(2)-Mb1(2)*s1(1);
     s2', Mb2(1)*s2(2)-Mb2(2)*s2(1);
     s3', Mb3(1)*s3(2)-Mb3(2)*s3(1)];

%% Stiffness and Damping matrices of the struts
Kr = diag([k1,k2,k3]);
Cr = diag([c1,c2,c3]);

```

```

Matlab
%% Mass Matrix in frame {M}
M = diag([m,m,I]);

%% Stiffness Matrix in frame {M}
K = J'*Kr*J;

%% Damping Matrix in frame {M}
C = J'*Cr*J;

```

The plant from τ to \mathcal{L} is defined below

```

%% Plant in frame {M}
G = J*inv(M*s^2 + C*s + K)*J';

```

Matlab

The magnitude of the coupled plant G is shown in Figure 3.2.

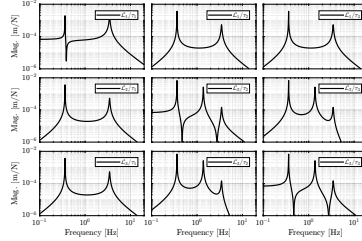


Figure 3.2: Magnitude of the coupled plant.

3.2 Jacobian Decoupling

The Jacobian matrix can be used to:

- Convert joints velocity $\dot{\mathcal{L}}$ to payload velocity and angular velocity $\dot{\mathcal{X}}_{\{O\}}$:

$$\dot{\mathcal{X}}_{\{O\}} = J_{\{O\}} \dot{\mathcal{L}}$$

- Convert actuators forces τ to forces/torque applied on the payload $\mathcal{F}_{\{O\}}$:

$$\mathcal{F}_{\{O\}} = J_{\{O\}}^T \tau$$

with $\{O\}$ any chosen frame.

By wisely choosing frame $\{O\}$, we can obtain nice decoupling for plant:

$$\mathbf{G}_{\{O\}} = J_{\{O\}}^{-1} \mathbf{G} J_{\{O\}}^{-T} \quad (3.1)$$

The obtained plant corresponds to forces/torques applied on origin of frame $\{O\}$ to the translation/rotation of the payload expressed in frame $\{O\}$.

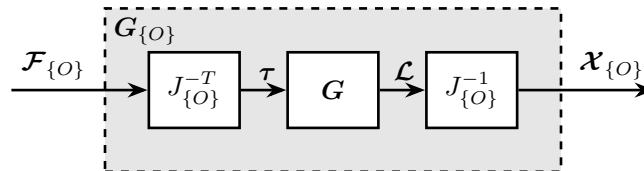


Figure 3.3: Block diagram of the transfer function from $\mathcal{F}_{\{O\}}$ to $\mathcal{X}_{\{O\}}$

Important

The Jacobian matrix is only based on the geometry of the system and does not depend on the physical properties such as mass and stiffness.

The inputs and outputs of the decoupled plant $G_{\{O\}}$ have physical meaning:

- $\mathcal{F}_{\{O\}}$ are forces/torques applied on the payload at the origin of frame $\{O\}$
- $\mathcal{X}_{\{O\}}$ are translations/rotation of the payload expressed in frame $\{O\}$

It is then easy to include a reference tracking input that specify the wanted motion of the payload in the frame $\{O\}$.

3.3 Modal Decoupling

Let's consider a system with the following equations of motion:

$$M\ddot{\mathbf{x}} + C\dot{\mathbf{x}} + K\mathbf{x} = \mathcal{F} \quad (3.2)$$

And the measurement output is a combination of the motion variable \mathbf{x} :

$$\mathbf{y} = C_{ox}\mathbf{x} + C_{ov}\dot{\mathbf{x}} \quad (3.3)$$

Let's make a **change of variables**:

$$\mathbf{x} = \Phi \mathbf{x}_m \quad (3.4)$$

with:

- \mathbf{x}_m the modal amplitudes
- Φ a matrix whose columns are the modes shapes of the system

And we map the actuator forces:

$$\mathcal{F} = J^T \boldsymbol{\tau} \quad (3.5)$$

The equations of motion become:

$$M\Phi\ddot{\mathbf{x}}_m + C\Phi\dot{\mathbf{x}}_m + K\Phi\mathbf{x}_m = J^T \boldsymbol{\tau} \quad (3.6)$$

And the measured output is:

$$\mathbf{y} = C_{ox}\Phi\mathbf{x}_m + C_{ov}\Phi\dot{\mathbf{x}}_m \quad (3.7)$$

By pre-multiplying the EoM by Φ^T :

$$\Phi^T M \Phi \ddot{\mathbf{x}}_m + \Phi^T C \Phi \dot{\mathbf{x}}_m + \Phi^T K \Phi \mathbf{x}_m = \Phi^T J^T \boldsymbol{\tau} \quad (3.8)$$

And we note:

- $M_m = \Phi^T M \Phi = \text{diag}(\mu_i)$ the modal mass matrix

- $C_m = \Phi^T C \Phi = \text{diag}(2\xi_i \mu_i \omega_i)$ (classical damping)
- $K_m = \Phi^T K \Phi = \text{diag}(\mu_i \omega_i^2)$ the modal stiffness matrix

And we have:

$$\ddot{\mathbf{x}}_m + 2\Xi\Omega\dot{\mathbf{x}}_m + \Omega^2\mathbf{x}_m = \mu^{-1}\Phi^T J^T \boldsymbol{\tau} \quad (3.9)$$

with:

- $\mu = \text{diag}(\mu_i)$
- $\Omega = \text{diag}(\omega_i)$
- $\Xi = \text{diag}(\xi_i)$

And we call the **modal input matrix**:

$$\boxed{B_m = \mu^{-1}\Phi^T J^T} \quad (3.10)$$

And the **modal output matrices**:

$$\boxed{C_m = C_{ox}\Phi + C_{ov}\Phi s} \quad (3.11)$$

Let's note the “modal input”:

$$\boldsymbol{\tau}_m = B_m \boldsymbol{\tau} \quad (3.12)$$

The transfer function from $\boldsymbol{\tau}_m$ to \mathbf{x}_m is:

$$\boxed{\frac{\mathbf{x}_m}{\boldsymbol{\tau}_m} = (I_n s^2 + 2\Xi\Omega s + \Omega^2)^{-1}} \quad (3.13)$$

which is a **diagonal** transfer function matrix. We therefore have decoupling of the dynamics from $\boldsymbol{\tau}_m$ to \mathbf{x}_m .

We now expressed the transfer function from input $\boldsymbol{\tau}$ to output \mathbf{y} as a function of the “modal variables”:

$$\boxed{\frac{\mathbf{y}}{\boldsymbol{\tau}} = \underbrace{(C_{ox} + sC_{ov})\Phi}_{C_m} \underbrace{(I_n s^2 + 2\Xi\Omega s + \Omega^2)^{-1}}_{\text{diagonal}} \underbrace{(\mu^{-1}\Phi^T J^T)}_{B_m}} \quad (3.14)$$

By inverting B_m and C_m and using them as shown in Figure 3.4, we can see that we control the system in the “modal space” in which it is decoupled.

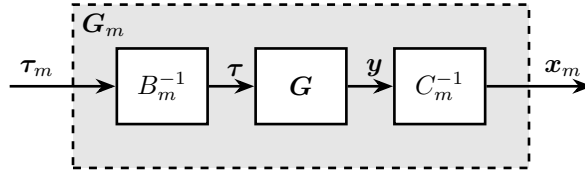


Figure 3.4: Modal Decoupling Architecture

The system $\mathbf{G}_m(s)$ shown in Figure 3.4 is diagonal (3.13).

Important

Modal decoupling requires to have the equations of motion of the system. From the equations of motion (and more precisely the mass and stiffness matrices), the mode shapes Φ are computed. Then, the system can be decoupled in the modal space. The obtained system on the diagonal are second order resonant systems which can be easily controlled. Using this decoupling strategy, it is possible to control each mode individually.

3.4 SVD Decoupling

Procedure:

- Identify the dynamics of the system from inputs to outputs (can be obtained experimentally)
- Choose a frequency where we want to decouple the system (usually, the crossover frequency is a good choice)

```
Matlab  
%% Decoupling frequency [rad/s]  
wc = 2*pi*10;  
  
%% System's response at the decoupling frequency  
H1 = evalfr(G, j*wc);
```

- Compute a real approximation of the system's response at that frequency

```
Matlab  
%% Real approximation of G(j.wc)  
D = pinv(real(H1'*H1));  
H1 = pinv(D*real(H1'*diag(exp(j*angle(diag(H1*D*H1.'))/2))));
```

- Perform a Singular Value Decomposition of the real approximation

```
Matlab  
[U,S,V] = svd(H1);
```

- Use the singular input and output matrices to decouple the system as shown in Figure 3.5

$$G_{svd}(s) = U^{-1}G(s)V^{-T}$$

```
Matlab  
Gsvd = inv(U)*G*inv(V');
```

Important

In order to apply the Singular Value Decomposition, we need to have the Frequency Response Function of the system, at least near the frequency where we wish to decouple the system. The FRF can be experimentally obtained or based from a model. This method ensure good decoupling near the chosen frequency, but no guaranteed decoupling away from this frequency.

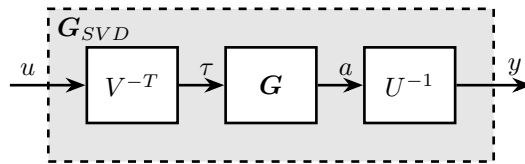


Figure 3.5: Decoupled plant G_{SVD} using the Singular Value Decomposition

Also, it depends on how good the real approximation of the FRF is, therefore it might be less good for plants with high damping.

This method is quite general and can be applied to any type of system. The inputs and outputs are ordered from higher gain to lower gain at the chosen frequency.

- Do we lose any physical meaning of the obtained inputs and outputs?
- Can we take advantage of the fact that U and V are unitary?

3.5 Comparison

3.5.1 Jacobian Decoupling

Decoupling properties depends on the chosen frame $\{O\}$.

Let's take the CoM as the decoupling frame.

```

Gx = pinv(J)*G*pinv(J');
Gx.InputName = {'Fx', 'Fy', 'Mz'};
Gx.OutputName = {'Dx', 'Dy', 'Rz'};

```

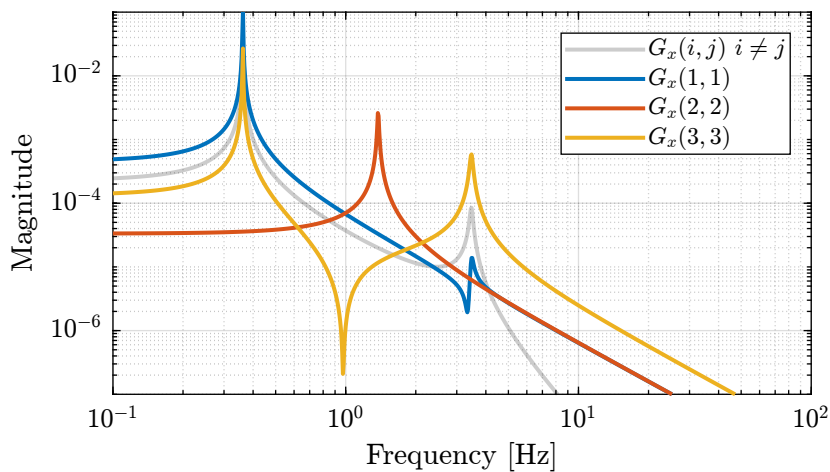


Figure 3.6: Plant decoupled using the Jacobian matrices $G_x(s)$

3.5.2 Modal Decoupling

For the system in Figure 3.1, we have:

$$\mathbf{x} = \begin{bmatrix} x \\ y \\ R_z \end{bmatrix} \quad (3.15)$$

$$\mathbf{y} = \mathcal{L} = J\mathbf{x}; \quad C_{ox} = J; \quad C_{ov} = 0 \quad (3.16)$$

$$M = \begin{bmatrix} m & 0 & 0 \\ 0 & m & 0 \\ 0 & 0 & I \end{bmatrix}; \quad K = J' \begin{bmatrix} k & 0 & 0 \\ 0 & k & 0 \\ 0 & 0 & k \end{bmatrix} J; \quad C = J' \begin{bmatrix} c & 0 & 0 \\ 0 & c & 0 \\ 0 & 0 & c \end{bmatrix} J \quad (3.17)$$

In order to apply the architecture shown in Figure 3.4, we need to compute C_{ox} , C_{ov} , Φ , μ and J .

```

Matlab
%% Modal Decomposition
[V,D] = eig(MK);

%% Modal Mass Matrix
mu = V'*M*V;

%% Modal output matrix
Cm = J*V;

%% Modal input matrix
Bm = inv(mu)*V'*J';

```

Table 3.1: B_m matrix

-0.0004	-0.0007	0.0007
-0.0151	0.0041	-0.0041
0.0	0.0025	0.0025

Table 3.2: C_m matrix

-0.1	-1.8	0.0
-0.2	0.5	1.0
0.2	-0.5	1.0

And the plant in the modal space is defined below and its magnitude is shown in Figure 3.7.

```

Matlab
Gm = inv(Cm)*G*inv(Bm);

```

Let's now close one loop at a time and see how the transmissibility changes.

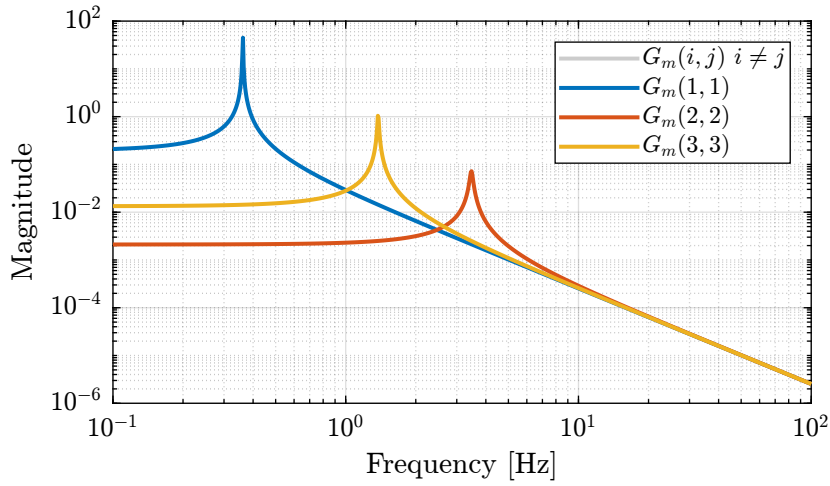


Figure 3.7: Modal plant $G_m(s)$

Table 3.3: Real approximate of G at the decoupling frequency ω_c

$-8e-06$	$2.1e-06$	$-2.1e-06$
$2.1e-06$	$-1.3e-06$	$-2.5e-08$
$-2.1e-06$	$-2.5e-08$	$-1.3e-06$

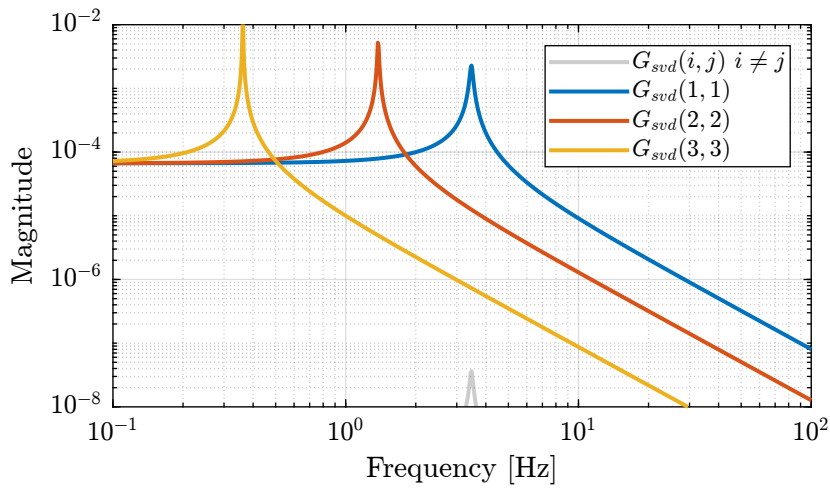


Figure 3.8: Svd plant $G_m(s)$

3.5.3 SVD Decoupling

3.6 Further Notes

3.6.1 Robustness of the decoupling strategies?

What happens if we have an additional resonance in the system (Figure 3.9).

Less actuator than DoF:

- modal decoupling: can still control first n modes?
- SVD decoupling: does not matter
- Jacobian decoupling: could give poor decoupling?

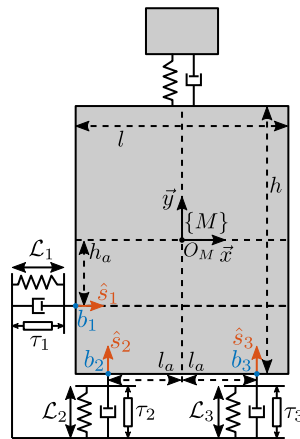


Figure 3.9: Plant with spurious resonance (additional DoF)

3.6.2 Other decoupling strategies

- DC decoupling: pre-multiply the plant by $G(0)^{-1}$
- full decoupling: pre-multiply the plant by $G(s)^{-1}$

3.7 Conclusion

The three proposed methods clearly have a lot in common as they all tend to make system more decoupled by pre and/or post multiplying by a constant matrix. However, the three methods also differ by a number of points which are summarized in Table 3.4.

Table 3.4: Comparison of decoupling strategies

	Jacobian	Modal	SVD
Philosophy	Topology Driven	Physics Driven	Data Driven
Requirements	Known geometry	Known equations of motion	Identified FRF
Decoupling Matrices	Decoupling using J obtained from geometry	Decoupling using Φ obtained from modal decomposition	Decoupling using U and V obtained from SVD
Decoupled Plant	$\mathbf{G}_{\{O\}} = J_{\{O\}}^{-1} \mathbf{G} J_{\{O\}}^{-T}$	$\mathbf{G}_m = C_m^{-1} \mathbf{G} B_m^{-1}$	$\mathbf{G}_{svd}(s) = U^{-1} \mathbf{G}(s) V^{-T}$
Implemented Controller	$\mathbf{K}_{\{O\}} = J_{\{O\}}^{-T} \mathbf{K}_d(s) J_{\{O\}}^{-1}$	$\mathbf{K}_m = B_m^{-1} \mathbf{K}_d(s) C_m^{-1}$	$\mathbf{K}_{svd}(s) = V^{-T} \mathbf{K}_d(s) U^{-1}$
Physical Interpretation	Forces/Torques to Displacement/Rotation in chosen frame	Inputs to excite individual modes Output to sense individual modes	Directions of max to min controllability/observability
Decoupling Properties	Decoupling at low or high frequency depending on the chosen frame	Good decoupling at all frequencies	Good decoupling near the chosen frequency
Pros	Physical inputs / outputs Good decoupling at High frequency (diagonal mass matrix if Jacobian taken at the CoM) Good decoupling at Low frequency (if Jacobian taken at specific point) Easy integration of meaningful reference inputs	Target specific modes 2nd order diagonal plant	Good Decoupling near the crossover Very General
Cons	Coupling between force/rotation may be high at low frequency (non diagonal terms in \mathbf{K}) Limited to parallel mechanisms (?) If good decoupling at all frequencies \Rightarrow requires specific mechanical architecture	Need analytical equations	Loose the physical meaning of inputs / outputs Decoupling depends on the real approximation validity
Applicability	Parallel Mechanisms Only small motion for the Jacobian matrix to stay constant	Systems whose dynamics that can be expressed with \mathbf{M} and \mathbf{K} matrices	Very general Need FRF data (either experimentally or analytically)

4 Diagonal Stiffness Matrix for a planar manipulator

4.1 Model and Assumptions

Consider a parallel manipulator with:

- b_i : location of the joints on the top platform are called b_i
- \hat{s}_i : unit vector corresponding to the struts
- k_i : stiffness of the struts
- τ_i : actuator forces
- O_M : center of mass of the solid body

Consider two frames:

- $\{M\}$ with origin O_M
- $\{K\}$ with origin O_K

As an example, take the system shown in Figure 4.1.

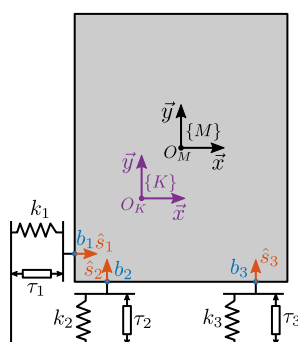


Figure 4.1: Example of 3DoF parallel platform

4.2 Objective

The objective is to find conditions for the existence of a frame $\{K\}$ in which the Stiffness matrix of the manipulator is diagonal. If the conditions are fulfilled, a second objective is to find the location of the frame $\{K\}$ analytically.

4.3 Conditions for Diagonal Stiffness

The stiffness matrix in the frame $\{K\}$ can be expressed as:

$$K_{\{K\}} = J_{\{K\}}^T \mathcal{K} J_{\{K\}} \quad (4.1)$$

where:

- $J_{\{K\}}$ is the Jacobian transformation from the struts to the frame $\{K\}$
- \mathcal{K} is a diagonal matrix with the strut stiffnesses on the diagonal

$$\mathcal{K} = \begin{bmatrix} k_1 & & & 0 \\ & k_2 & & \\ & & \ddots & \\ 0 & & & k_n \end{bmatrix} \quad (4.2)$$

The Jacobian for a planar manipulator, evaluated in a frame $\{K\}$, can be expressed as follows:

$$J_{\{K\}} = \begin{bmatrix} {}^K \hat{s}_1^T & {}^K b_{1,x} {}^K \hat{s}_{1,y} - {}^K b_{1,x} {}^K \hat{s}_{1,y} \\ {}^K \hat{s}_2^T & {}^K b_{2,x} {}^K \hat{s}_{2,y} - {}^K b_{2,x} {}^K \hat{s}_{2,y} \\ \vdots & \vdots \\ {}^K \hat{s}_n^T & {}^K b_{n,x} {}^K \hat{s}_{n,y} - {}^K b_{n,x} {}^K \hat{s}_{n,y} \end{bmatrix} \quad (4.3)$$

Let's omit the mention of frame, it is assumed that vectors are expressed in frame $\{K\}$. It is specified otherwise.

Injecting (4.3) into (4.1) yields:

$$K_{\{K\}} = \left[\begin{array}{c|c} k_i \hat{s}_i \hat{s}_i^T & k_i \hat{s}_i (b_{i,x} \hat{s}_{i,y} - b_{i,y} \hat{s}_{i,x}) \\ \hline k_i \hat{s}_i (b_{i,x} \hat{s}_{i,y} - b_{i,y} \hat{s}_{i,x}) & k_i (b_{i,x} \hat{s}_{i,y} - b_{i,y} \hat{s}_{i,x})^2 \end{array} \right] \quad (4.4)$$

In order to have a decoupled stiffness matrix, we have the following two conditions:

$$k_i \hat{s}_i \hat{s}_i^T = \text{diag. matrix} \quad (4.5)$$

$$k_i \hat{s}_i (b_{i,x} \hat{s}_{i,y} - b_{i,y} \hat{s}_{i,x}) = 0 \quad (4.6)$$

Note that we don't have any condition on the term $k_i (b_{i,x} \hat{s}_{i,y} - b_{i,y} \hat{s}_{i,x})^2$ as it is only a scalar.

Condition (4.5):

- represents the coupling between translations and forces
- does only depends on the orientation of the struts and the stiffnesses and not on the choice of frame
- it is therefore a intrinsic property of the chosen geometry

Condition (4.6):

- represents the coupling between forces/rotations and torques/translation
- it does depend on the positions of the joints b_i in the frame $\{K\}$

Let's make a change of frame from the initial frame $\{M\}$ to the frame $\{K\}$:

$${}^K b_i = {}^M b_i - {}^M O_K \quad (4.7)$$

$${}^K \hat{s}_i = {}^M \hat{s}_i \quad (4.8)$$

And the goal is to find ${}^M O_K$ such that (4.6) is fulfilled:

$$k_i ({}^M b_{i,x} \hat{s}_{i,y} - {}^M b_{i,y} \hat{s}_{i,x} - {}^M O_{K,x} \hat{s}_{i,y} + {}^M O_{K,y} \hat{s}_{i,x}) \hat{s}_i = 0 \quad (4.9)$$

$$k_i ({}^M b_{i,x} \hat{s}_{i,y} - {}^M b_{i,y} \hat{s}_{i,x}) \hat{s}_i = {}^M O_{K,x} k_i \hat{s}_{i,y} \hat{s}_i - {}^M O_{K,y} k_i \hat{s}_{i,x} \hat{s}_i \quad (4.10)$$

And we have two sets of linear equations of two unknowns.

This can be easily solved by writing the equations in a matrix form:

$$\underbrace{k_i ({}^M b_{i,x} \hat{s}_{i,y} - {}^M b_{i,y} \hat{s}_{i,x}) \hat{s}_i}_{2 \times 1} = \underbrace{\begin{bmatrix} k_i \hat{s}_{i,y} \hat{s}_i & -k_i \hat{s}_{i,x} \hat{s}_i \end{bmatrix}}_{2 \times 2} \underbrace{\begin{bmatrix} {}^M O_{K,x} \\ {}^M O_{K,y} \end{bmatrix}}_{2 \times 1} \quad (4.11)$$

And finally, if the matrix is invertible:

$${}^M O_K = \begin{bmatrix} k_i \hat{s}_{i,y} \hat{s}_i & -k_i \hat{s}_{i,x} \hat{s}_i \\ k_i ({}^M b_{i,x} \hat{s}_{i,y} - {}^M b_{i,y} \hat{s}_{i,x}) \hat{s}_i \end{bmatrix}^{-1} \quad (4.12)$$

Note that a rotation of the frame $\{K\}$ with respect to frame $\{M\}$ would make not change on the “diagonality” of $K_{\{K\}}$.

4.4 Example 1 - Planar manipulator with 3 actuators

Consider system of Figure 4.2.

The stiffnesses k_i , the joint positions ${}^M b_i$ and joint unit vectors ${}^M \hat{s}_i$ are defined below:

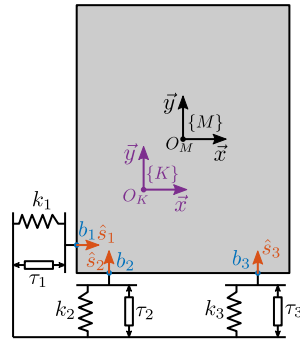


Figure 4.2: Example of 3DoF parallel platform

```

Matlab
ki = [5,1,2]; % Stiffnesses [N/m]
si = [[1;0],[0;1],[0;1]]; si = si./vecnorm(si); % Unit Vectors
bi = [[-1;0.5],[-2;-1],[0;-1]]; % Joint's positions in frame {M}

```

Let's first verify that condition (4.5) is true:

$$\begin{bmatrix} 5 & 0 \\ 0 & 2 \end{bmatrix}$$

Now, compute ${}^M O_K$:

```

Matlab
Ok = inv([sum(ki.*si(2,:)).*si, 2], -sum(ki.*si(1,:)).*si, 2])*sum(ki.*(bi(1,:).*si(2,:) - bi(2,:).*si(1,:)).*si, 2);

```

$$\begin{bmatrix} -1 \\ 0.5 \end{bmatrix}$$

Let's compute the new coordinates ${}^K b_i$ after the change of frame:

```

Matlab
Kbi = bi - Ok;

```

In order to verify that the new frame $\{K\}$ indeed yields a diagonal stiffness matrix, we first compute the Jacobian $J_{\{K\}}$:

```

Matlab
Jk = [si', (Kbi(1,:).*si(2,:) - Kbi(2,:).*si(1,:))'];

```

$$\begin{bmatrix} 1 & 0 & 0 \\ 0 & 1 & -1 \\ 0 & 1 & 1 \end{bmatrix}$$

And the stiffness matrix:

```
Matlab
K = Jk'*diag(ki)*Jk
```

$$\begin{bmatrix} 5 & 0 & 0 \\ 0 & 2 & 0 \\ 0 & 0 & 2 \end{bmatrix}$$

4.5 Example 2 - Planar manipulator with 4 actuators

Now consider the planar manipulator of Figure 4.3.

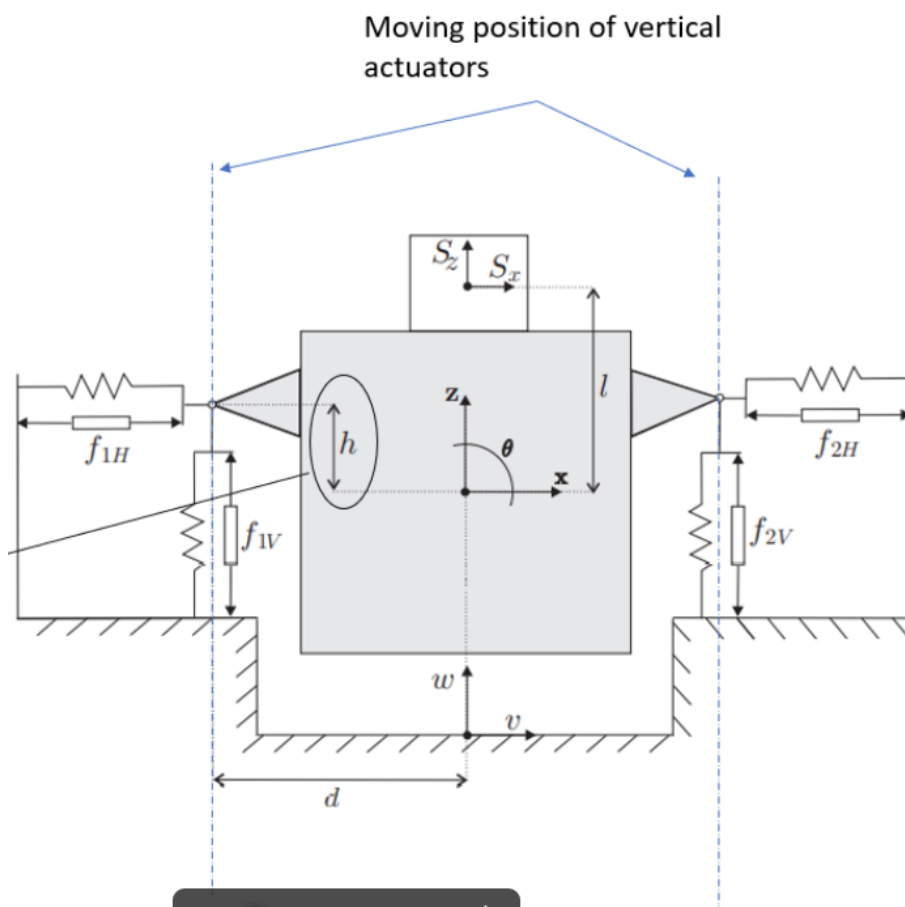


Figure 4.3: Planar Manipulator

The stiffnesses k_i , the joint positions ${}^M b_i$ and joint unit vectors ${}^M \hat{s}_i$ are defined below:

```
Matlab
ki = [1,2,1,1];
si = [[1;0],[0;1],[-1;0],[0;1]];
si = si./vecnorm(si);
h = 0.2;
```

```
L = 2;
bi = [[-L/2;h],[-L/2;-h],[L/2;h],[L/2;h]];
```

Let's first verify that condition (4.5) is true:

```
ki.*si.*si'
```

```
2 0
0 3
```

Now, compute ${}^M O_K$:

```
Ok = inv([sum(ki.*si(2,:).*si, 2), -sum(ki.*si(1,:).*si, 2)]*sum(ki.*(bi(1,:).*si(2,:) - bi(2,:).*si(1,:)).*si, 2);
```

```
-0.33333
0.2
```

Let's compute the new coordinates ${}^K b_i$ after the change of frame:

```
Kbi = bi - Ok;
```

In order to verify that the new frame $\{K\}$ indeed yields a diagonal stiffness matrix, we first compute the Jacobian $J_{\{K\}}$:

```
Jk = [si', (Kbi(1,:).*si(2,:) - Kbi(2,:).*si(1,:))'];
```

```
1 0 0
0 1 -0.66667
-1 0 0
0 1 1.3333
```

And the stiffness matrix:

```
K = Jk'*diag(ki)*Jk
```

```
2 0 0
0 3 -2.2204e-16
0 -2.2204e-16 2.6667
```

5 Diagonal Stiffness Matrix for a general parallel manipulator

5.1 Model and Assumptions

Let's consider a 6dof parallel manipulator with:

- b_i : location of the joints on the top platform are called b_i
- \hat{s}_i : unit vector corresponding to the struts
- k_i : stiffness of the struts
- τ_i : actuator forces
- O_M : center of mass of the solid body

Consider two frames:

- $\{M\}$ with origin O_M
- $\{K\}$ with origin O_K

An example is shown in Figure 5.1.

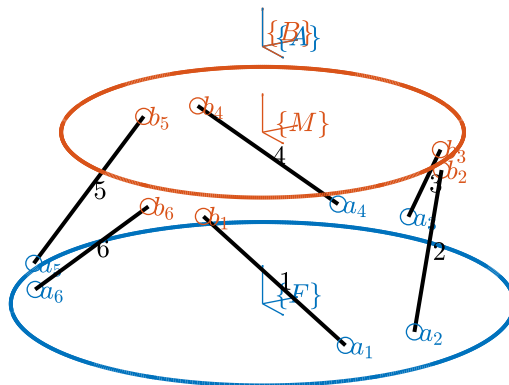


Figure 5.1: Parallel manipulator Example

5.2 Objective

The objective is to find conditions for the existence of a frame $\{K\}$ in which the Stiffness matrix of the manipulator is diagonal. If the conditions are fulfilled, a second objective is to find the location of the frame $\{K\}$ analytically.

5.3 Analytical formula of the stiffness matrix

For a fully parallel manipulator, the stiffness matrix $K_{\{K\}}$ expressed in a frame $\{K\}$ is:

$$K_{\{K\}} = J_{\{K\}}^T \mathcal{K} J_{\{K\}} \quad (5.1)$$

where:

- $J_{\{K\}}$ is the Jacobian transformation from the struts to the frame $\{K\}$
- \mathcal{K} is a diagonal matrix with the strut stiffnesses on the diagonal:

$$\mathcal{K} = \begin{bmatrix} k_1 & & & 0 \\ & k_2 & & \\ & & \ddots & \\ 0 & & & k_n \end{bmatrix} \quad (5.2)$$

The analytical expression of $J_{\{K\}}$ is:

$$J_{\{K\}} = \begin{bmatrix} {}^K \hat{s}_1^T & ({}^K b_1 \times {}^K \hat{s}_1)^T \\ {}^K \hat{s}_2^T & ({}^K b_2 \times {}^K \hat{s}_2)^T \\ \vdots & \vdots \\ {}^K \hat{s}_n^T & ({}^K b_n \times {}^K \hat{s}_n)^T \end{bmatrix} \quad (5.3)$$

To simplify, we ignore the superscript K and we assume that all vectors / positions are expressed in this frame $\{K\}$. Otherwise, it is explicitly written.

Let's now write the analytical expressing of the stiffness matrix $K_{\{K\}}$:

$$K_{\{K\}} = \begin{bmatrix} \hat{s}_1 & \dots & \hat{s}_n \\ (b_1 \times \hat{s}_1) & \dots & (b_n \times \hat{s}_n) \end{bmatrix} \begin{bmatrix} k_1 & & \\ & \ddots & \\ & & k_n \end{bmatrix} \begin{bmatrix} \hat{s}_1^T & (b_1 \times \hat{s}_1)^T \\ \hat{s}_2^T & (b_2 \times \hat{s}_2)^T \\ \vdots & \dots \\ \hat{s}_n^T & (b_n \times \hat{s}_n)^T \end{bmatrix} \quad (5.4)$$

And we finally obtain:

$$K_{\{K\}} = \left[\begin{array}{c|c} k_i \hat{s}_i \hat{s}_i^T & k_i \hat{s}_i (b_i \times \hat{s}_i)^T \\ \hline k_i (b_i \times \hat{s}_i) \hat{s}_i^T & k_i (b_i \times \hat{s}_i) (b_i \times \hat{s}_i)^T \end{array} \right] \quad (5.5)$$

We want the stiffness matrix to be diagonal, therefore, we have the following conditions:

$$k_i \hat{s}_i \hat{s}_i^T = \text{diag. matrix} \quad (5.6)$$

$$k_i (b_i \times \hat{s}_i)(b_i \times \hat{s}_i)^T = \text{diag. matrix} \quad (5.7)$$

$$k_i \hat{s}_i (b_i \times \hat{s}_i)^T = 0 \quad (5.8)$$

Note that:

- condition (5.6) corresponds to coupling between forces applied on O_K to translations of the payload. It does not depend on the choice of $\{K\}$, it only depends on the orientation of the struts and the stiffnesses. It is therefore an intrinsic property of the manipulator.
- condition (5.7) corresponds to the coupling between forces applied on O_K and rotation of the payload. Similarly, it does also correspond to the coupling between torques applied on O_K to translations of the payload.
- condition (5.8) corresponds to the coupling between torques applied on O_K to rotation of the payload.
- conditions (5.7) and (5.8) do depend on the positions ${}^K b_i$ and therefore depend on the choice of $\{K\}$.

Note that if we find a frame $\{K\}$ in which the stiffness matrix $K_{\{K\}}$ is diagonal, it will still be diagonal for any rotation of the frame $\{K\}$. Therefore, we here suppose that the frame $\{K\}$ is aligned with the initial frame $\{M\}$.

Let's make a change of frame from the initial frame $\{M\}$ to the frame $\{K\}$:

$${}^K b_i = {}^M b_i - {}^M O_K \quad (5.9)$$

$${}^K \hat{s}_i = {}^M \hat{s}_i \quad (5.10)$$

The goal is to find ${}^M O_K$ such that conditions (5.7) and (5.8) are fulfilled.

Let's first solve equation (5.8) that corresponds to the coupling between forces and rotations:

$$k_i \hat{s}_i (({}^M b_i - {}^M O_K) \times \hat{s}_i)^T = 0 \quad (5.11)$$

Taking the transpose and re-arranging:

$$k_i ({}^M b_i \times \hat{s}_i) \hat{s}_i^T = k_i ({}^M O_K \times \hat{s}_i) \hat{s}_i^T \quad (5.12)$$

As the vector cross product also can be expressed as the product of a skew-symmetric matrix and a vector, we obtain:

$$k_i ({}^M b_i \times \hat{s}_i) \hat{s}_i^T = {}^M \mathbf{O}_K (k_i \hat{s}_i \hat{s}_i^T) \quad (5.13)$$

with:

$${}^M \mathbf{O}_K = \begin{bmatrix} 0 & -{}^M O_{K,z} & {}^M O_{K,y} \\ {}^M O_{K,z} & 0 & -{}^M O_{K,x} \\ -{}^M O_{K,y} & {}^M O_{K,x} & 0 \end{bmatrix} \quad (5.14)$$

We suppose $k_i \hat{s}_i \hat{s}_i^T$ invertible as it is diagonal from (5.6).

And finally, we find:

$$\boxed{{}^M O_K = (k_i ({}^M b_i \times \hat{s}_i) \hat{s}_i^T) \cdot (k_i \hat{s}_i \hat{s}_i^T)^{-1}} \quad (5.15)$$

If the obtained ${}^M O_K$ is a skew-symmetric matrix, we can easily determine the corresponding vector ${}^M O_K$ from (5.14).

In such case, condition (5.7) is fulfilled and there is no coupling between translations and rotations in the frame $\{K\}$.

Then, we can only verify if condition (5.8) is verified or not.

Note

If there is no frame $\{K\}$ such that conditions (5.7) and (5.8) are valid, it would be interesting to be able to determine the frame $\{K\}$ in which is coupling is minimal.

5.4 Example 1 - 6DoF manipulator (3D)

Let's define the geometry of the manipulator (${}^M b_i$, ${}^M s_i$ and k_i):

```

----- Matlab -----
ki = [2,2,1,1,3,3,1,1,1,1,2,2];
si = [[-1;0;0],[-1;0;0],[-1;0;0],[-1;0;0],[0;0;1],[0;0;1],[0;0;1],[0;0;1],[0;-1;0],[0;-1;0],[0;-1;0],[0;-1;0]];
bi =
↪ [[1;-1;1],[1;1;-1],[1;1;1],[1;-1;-1],[1;-1;-1],[-1;1;-1],[1;1;-1],[-1;-1;-1],[1;1;-1],[-1;1;1],[-1;1;-1],[1;1;1]]-[0;2;-1];

```

Cond 1:

```

----- Matlab -----
ki.*si.*si'

```

```

6  0  0
0  6  0
0  0  8

```

Find Ok

```

----- Matlab -----
OkX = (ki.*cross(bi, si).*si')/(ki.*si.*si');
if all(diag(OkX) == 0) && all(all((OkX + OkX') == 0))
    disp('OkX is skew symmetric')
    Ok = [OkX(3,2);OkX(1,3);OkX(2,1)]
else
    error('OkX is *not* skew symmetric')
end

```

```
0
-2
1
```

```
Matlab
% Verification of second condition
si*cross(bi-0k, si)'
```

```
0 0 0
0 0 0
0 0 0
```

Verification of third condition

```
Matlab
ki.*cross(bi-0k, si)*cross(bi-0k, si)'
```

```
14  4 -2
 4 14  2
-2  2 12
```

Let's compute the Jacobian:

```
Matlab
Jk = [si', cross(bi - 0k, si)'];
```

And the stiffness matrix:

```
Matlab
Jk'*diag(ki)*Jk
```

```
6 0 0 0 0 0
0 6 0 0 0 0
0 0 8 0 0 0
0 0 0 14 4 -2
0 0 0 4 14 2
0 0 0 -2 2 12
```

```
Matlab
figure;
hold on;
set(gca,'ColorOrderIndex',1)
plot(b1(1), b1(2), 'o');
set(gca,'ColorOrderIndex',2)
plot(b2(1), b2(2), 'o');
set(gca,'ColorOrderIndex',3)
plot(b3(1), b3(2), 'o');
set(gca,'ColorOrderIndex',1)
quiver(b1(1),b1(2),0.1*s1(1),0.1*s1(2))
set(gca,'ColorOrderIndex',2)
quiver(b2(1),b2(2),0.1*s2(1),0.1*s2(2))
set(gca,'ColorOrderIndex',3)
```

```
quiver(b3(1),b3(2),0.1*s3(1),0.1*s3(2))

plot(0, 0, 'ko');
quiver([0,0],[0,0],[0.1,0],[0,0.1], 'k')

plot(Ok(1), Ok(2), 'ro');
quiver([Ok(1),Ok(1)],[Ok(2),Ok(2)],[0.1,0],[0,0.1], 'r')

hold off;
axis equal;
```

5.5 Example 2 - Stewart Platform

6 Stiffness and Mass Matrices in the Leg's frame

6.1 Equations

Equations in the $\{M\}$ frame:

$$(M_{\{M\}}s^2 + K_{\{M\}}) \mathcal{X}_{\{M\}} = \mathcal{F}_{\{M\}} \quad (6.1)$$

Thank to the Jacobian, we can transform the equation of motion expressed in the $\{M\}$ frame to the frame of the legs:

$$J_{\{M\}}^{-T} (M_{\{M\}}s^2 + K_{\{M\}}) J_{\{M\}}^{-1} \dot{\mathcal{L}} = \tau \quad (6.2)$$

And we have new stiffness and mass matrices:

$$(M_{\{L\}}s^2 + K_{\{L\}}) \dot{\mathcal{L}} = \tau \quad (6.3)$$

with:

- The local mass matrix:

$$M_{\{L\}} = J_{\{M\}}^{-T} M_{\{M\}} J_{\{M\}}^{-1}$$

- The local stiffness matrix:

$$K_{\{L\}} = J_{\{M\}}^{-T} K_{\{M\}} J_{\{M\}}^{-1}$$

6.2 Stiffness matrix

We have that:

$$K_{\{M\}} = J_{\{M\}}^T \mathcal{K} J_{\{M\}}$$

Therefore, we find that $K_{\{L\}}$ is a diagonal matrix:

$$K_{\{L\}} = \mathcal{K} = \begin{bmatrix} k_1 & & 0 \\ & \ddots & \\ 0 & & k_n \end{bmatrix} \quad (6.4)$$

The dynamics from τ to \mathcal{L} is therefore decoupled at low frequency.

6.3 Mass matrix

The mass matrix in the frames of the legs is:

$$M_{\{L\}} = J_{\{M\}}^{-T} M_{\{M\}} J_{\{M\}}^{-1}$$

with $M_{\{M\}}$ a diagonal matrix:

$$M_{\{M\}} = \begin{bmatrix} m & & & & & \\ & m & & & & \\ & & m & & & \\ & & & I_x & & \\ & 0 & & & I_y & \\ & & & & & I_z \end{bmatrix} \quad (6.5)$$

Let's suppose $M_{\{L\}} = \mathcal{M}$ diagonal and try to find what does this imply:

$$M_{\{M\}} = J_{\{M\}}^T \mathcal{M} J_{\{M\}}$$

with:

$$\mathcal{M} = \begin{bmatrix} m_1 & & 0 \\ & \ddots & \\ 0 & & m_n \end{bmatrix} \quad (6.6)$$

We obtain:

$$M_{\{M\}} = \left[\begin{array}{c|c} m_i \hat{s}_i \hat{s}_i^T & m_i \hat{s}_i (b_i \times \hat{s}_i)^T \\ \hline k_i \hat{s}_i (b_i \times \hat{s}_i)^T & m_i (b_i \times \hat{s}_i) (b_i \times \hat{s}_i)^T \end{array} \right] \quad (6.7)$$

Therefore, we have the following conditions:

$$m_i \hat{s}_i \hat{s}_i^T = m \mathbf{I}_3 \quad (6.8)$$

$$m_i \hat{s}_i (b_i \times \hat{s}_i)^T = \mathbf{O}_3 \quad (6.9)$$

$$m_i (b_i \times \hat{s}_i) (b_i \times \hat{s}_i)^T = \text{diag}(I_x, I_y, I_z) \quad (6.10)$$

6.4 Planar Example

The stiffnesses k_i , the joint positions ${}^M b_i$ and joint unit vectors ${}^M \hat{s}_i$ are defined below:

```

Matlab
ki = [1,1,1]; % Stiffnesses [N/m]
si = [[1;0],[0;1],[0;1]]; si = si./vecnorm(si); % Unit Vectors
bi = [[-1; 0],[0],[-10;-1],[0;-1]]; % Joint's positions in frame {M}

```

Jacobian in frame $\{M\}$:

```
Jm = [si', (bi(1,:).*si(2,:) - bi(2,:).*si(1,:))'];
```

And the stiffness matrix in frame $\{K\}$:

```
Km = Jm'*diag(ki)*Jm;
```

$$\begin{bmatrix} 2 & 0 & 1 \\ 0 & 1 & -1 \\ 1 & -1 & 2 \end{bmatrix}$$

Mass matrix in the frame $\{M\}$:

```
m = 10; % [kg]
I = 1; % [kg.m^2]
Mm = diag([m, m, I]);
```

Now compute K and M in the frame of the legs:

```
ML = inv(Jm)'*Mm*inv(Jm)
KL = inv(Jm)'*Km*inv(Jm)
```

```
Gm = 1/(ML*s^2 + KL);
```

```
freqs = logspace(-2, 1, 1000);
figure;
hold on;
for i = 1:length(ki)
    plot(freqs, abs(squeeze(freqresp(Gm(i,i), freqs, 'Hz'))), 'k-')
end
for i = 1:length(ki)
    for j = i+1:length(ki)
        plot(freqs, abs(squeeze(freqresp(Gm(i,j), freqs, 'Hz'))), 'r-')
    end
end
hold off;
xlabel('Frequency [Hz]');
ylabel('Magnitude');
set(gca, 'xscale', 'log');
set(gca, 'yscale', 'log');
```

7 Stewart Platform - Simscape Model

In this analysis, we wish to applied SVD control to the Stewart Platform shown in Figure 7.1.

Some notes about the system:

- 6 voice coils actuators are used to control the motion of the top platform.
- the motion of the top platform is measured with a 6-axis inertial unit (3 acceleration + 3 angular accelerations)
- the control objective is to isolate the top platform from vibrations coming from the bottom platform

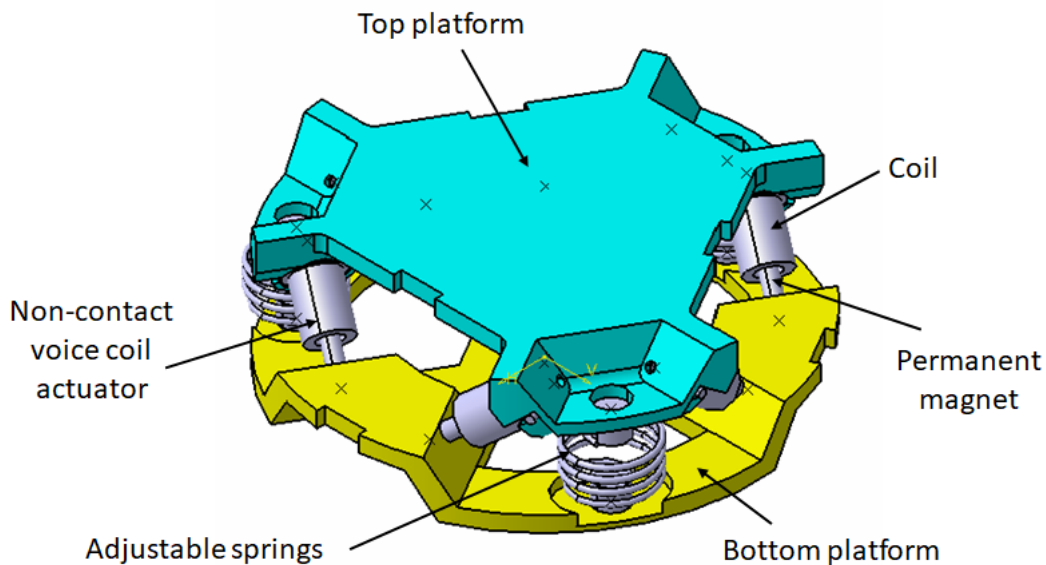


Figure 7.1: Stewart Platform CAD View

The analysis of the SVD/Jacobian control applied to the Stewart platform is performed in the following sections:

- Section 7.1: The parameters of the Simscape model of the Stewart platform are defined
- Section 7.2: The plant is identified from the Simscape model and the system coupling is shown
- Section 7.3: The plant is first decoupled using the Jacobian
- Section 7.4: The decoupling is performed thanks to the SVD. To do so a real approximation of

the plant is computed.

- Section 7.5: The effectiveness of the decoupling with the Jacobian and SVD are compared using the Gershorin Radii
- Section 7.6:
- Section 7.7: The dynamics of the decoupled plants are shown
- Section 7.8: A diagonal controller is defined to control the decoupled plant
- Section 7.9: Finally, the closed loop system properties are studied

7.1 Simscape Model - Parameters

```
open('drone_platform.slx');
```

Definition of spring parameters:

```
kx = 0.5*1e3/3; % [N/m]
ky = 0.5*1e3/3;
kz = 1e3/3;

cx = 0.025; % [Nm/rad]
cy = 0.025;
cz = 0.025;
```

We suppose the sensor is perfectly positioned.

```
sens_pos_error = zeros(3,1);
```

Gravity:

```
g = 0;
```

We load the Jacobian (previously computed from the geometry):

```
load('jacobian.mat', 'Aa', 'Ab', 'As', 'l', 'J');
```

We initialize other parameters:


```

U = eye(6);
V = eye(6);
Kc = tf(zeros(6));

```

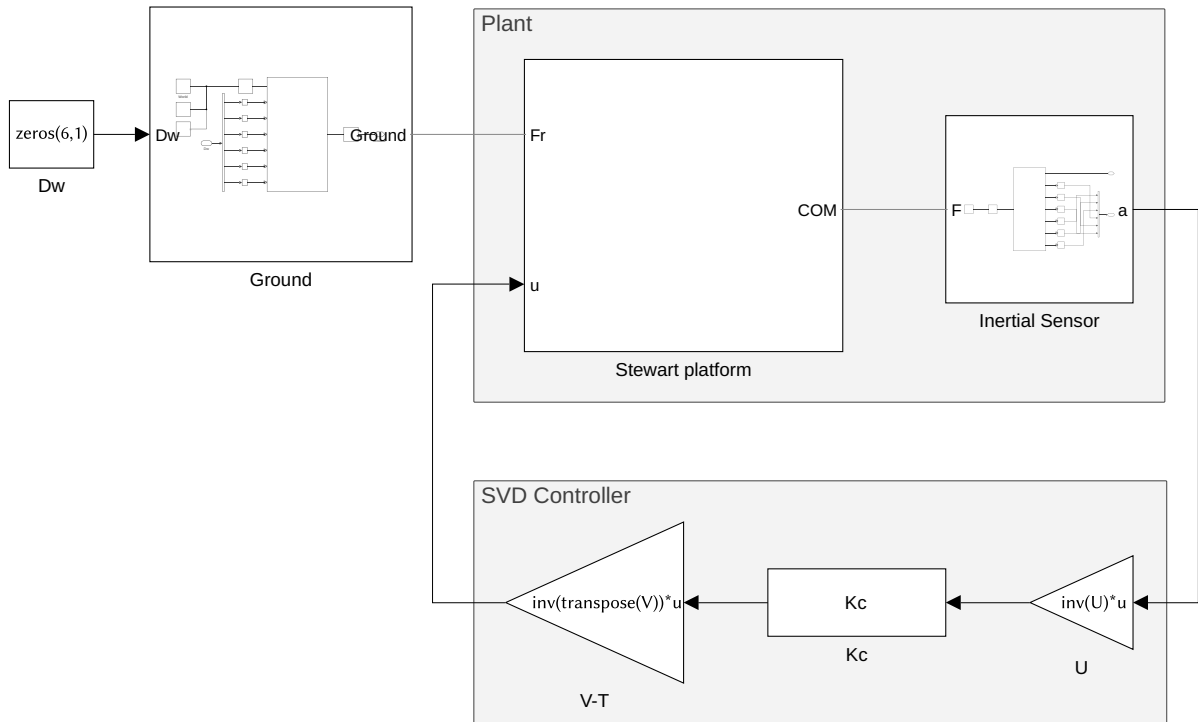


Figure 7.2: General view of the Simscape Model

7.2 Identification of the plant

The plant shown in Figure 7.4 is identified from the Simscape model.

The inputs are:

- D_w translation and rotation of the bottom platform (with respect to the center of mass of the top platform)
- τ the 6 forces applied by the voice coils

The outputs are the 6 accelerations measured by the inertial unit.

```

%% Name of the Simulink File
mdl = 'drone_platform';

%% Input/Output definition
clear io; io_i = 1;
io(io_i) = linio([mdl, '/Dw'], 1, 'openinput'); io_i = io_i + 1; % Ground Motion
io(io_i) = linio([mdl, '/V-T'], 1, 'openinput'); io_i = io_i + 1; % Actuator Forces
io(io_i) = linio([mdl, '/Inertial Sensor'], 1, 'openoutput'); io_i = io_i + 1; % Top platform acceleration

```

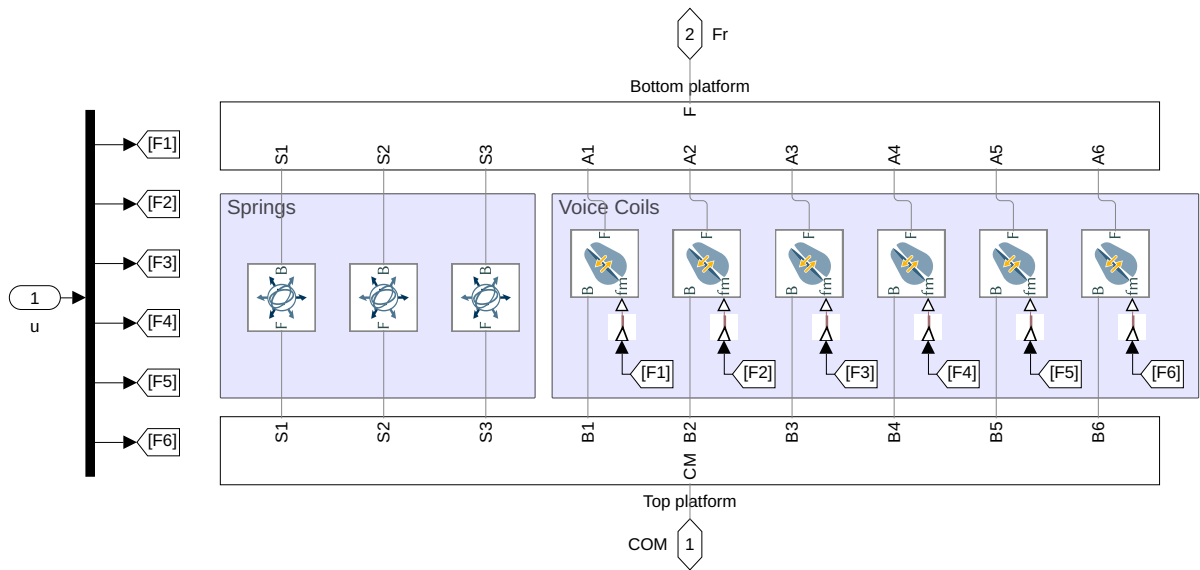


Figure 7.3: Simscape model of the Stewart platform

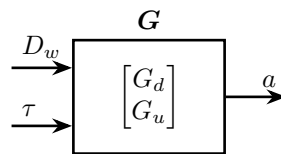


Figure 7.4: Considered plant $G = \begin{bmatrix} G_d \\ G_u \end{bmatrix}$. D_w is the translation/rotation of the support, τ the actuator forces, a the acceleration/angular acceleration of the top platform

```

G = linearize mdl, io);
G.InputName = {'Dwx', 'Dwy', 'Dwz', 'Rwx', 'Rwy', 'Rwz', ...
              'F1', 'F2', 'F3', 'F4', 'F5', 'F6'};
G.OutputName = {'Ax', 'Ay', 'Az', 'Arx', 'Ary', 'Arz'};

% Plant
Gu = G(:, {'F1', 'F2', 'F3', 'F4', 'F5', 'F6'});
% Disturbance dynamics
Gd = G(:, {'Dwx', 'Dwy', 'Dwz', 'Rwx', 'Rwy', 'Rwz'});

```

There are 24 states (6dof for the bottom platform + 6dof for the top platform).

```

Matlab
size(G)

Results
State-space model with 6 outputs, 12 inputs, and 24 states.

```

The elements of the transfer matrix \mathbf{G} corresponding to the transfer function from actuator forces τ to the measured acceleration a are shown in Figure 7.5.

One can easily see that the system is strongly coupled.

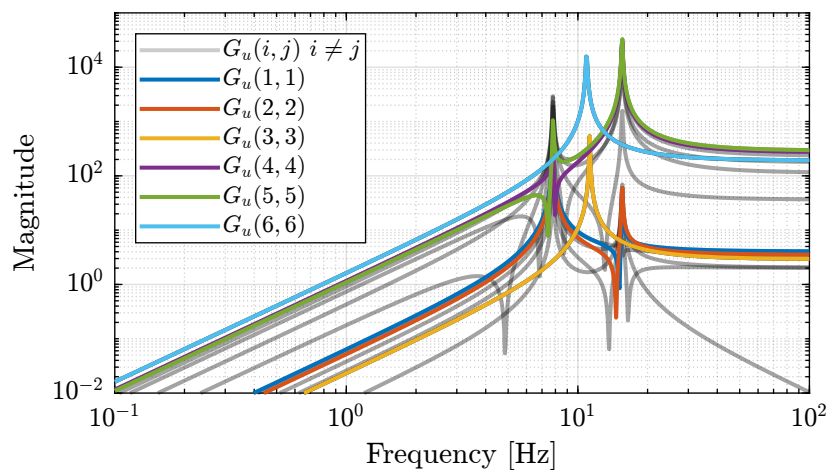


Figure 7.5: Magnitude of all 36 elements of the transfer function matrix G_u

7.3 Decoupling using the Jacobian

Consider the control architecture shown in Figure 7.6. The Jacobian matrix is used to transform forces/torques applied on the top platform to the equivalent forces applied by each actuator.

The Jacobian matrix is computed from the geometry of the platform (position and orientation of the actuators).

Table 7.1: Computed Jacobian Matrix

0.811	0.0	0.584	-0.018	-0.008	0.025
-0.406	-0.703	0.584	-0.016	-0.012	-0.025
-0.406	0.703	0.584	0.016	-0.012	0.025
0.811	0.0	0.584	0.018	-0.008	-0.025
-0.406	-0.703	0.584	0.002	0.019	0.025
-0.406	0.703	0.584	-0.002	0.019	-0.025

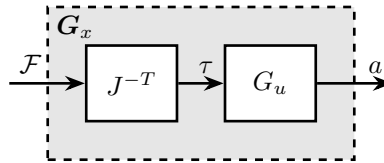


Figure 7.6: Decoupled plant G_x using the Jacobian matrix J

We define a new plant:

$$G_x(s) = G(s)J^{-T}$$

$G_x(s)$ correspond to the transfer function from forces and torques applied to the top platform to the absolute acceleration of the top platform.

```
Matlab
Gx = Gu*inv(J');
Gx.InputName = {'Fx', 'Fy', 'Fz', 'Mx', 'My', 'Mz'};
```

7.4 Decoupling using the SVD

In order to decouple the plant using the SVD, first a real approximation of the plant transfer function matrix as the crossover frequency is required.

Let's compute a real approximation of the complex matrix H_1 which corresponds to the the transfer function $G_u(j\omega_c)$ from forces applied by the actuators to the measured acceleration of the top platform evaluated at the frequency ω_c .

```
Matlab
wc = 2*pi*30; % Decoupling frequency [rad/s]
H1 = evalfr(Gu, j*wc);
```

The real approximation is computed as follows:

```
Matlab
D = pinv(real(H1'*H1));
H1 = inv(D*real(H1'*diag(exp(j*angle(diag(H1*D*H1.'))/2)))));
```

Note that the plant G_u at ω_c is already an almost real matrix. This can be seen on the Bode plots where the phase is close to 1. This can be verified below where only the real value of $G_u(\omega_c)$ is shown

Table 7.2: Real approximate of G at the decoupling frequency ω_c

4.4	-2.1	-2.1	4.4	-2.4	-2.4
-0.2	-3.9	3.9	0.2	-3.8	3.8
3.4	3.4	3.4	3.4	3.4	3.4
-367.1	-323.8	323.8	367.1	43.3	-43.3
-162.0	-237.0	-237.0	-162.0	398.9	398.9
220.6	-220.6	220.6	-220.6	220.6	-220.6

Table 7.3: Real part of G at the decoupling frequency ω_c

4.4	-2.1	-2.1	4.4	-2.4	-2.4
-0.2	-3.9	3.9	0.2	-3.8	3.8
3.4	3.4	3.4	3.4	3.4	3.4
-367.1	-323.8	323.8	367.1	43.3	-43.3
-162.0	-237.0	-237.0	-162.0	398.9	398.9
220.6	-220.6	220.6	-220.6	220.6	-220.6

Now, the Singular Value Decomposition of H_1 is performed:

$$H_1 = U\Sigma V^H$$

```
Matlab
[U,~,V] = svd(H1);
```

Table 7.4: Obtained matrix U

-0.005	7e-06	6e-11	-3e-06	-1	0.1
-7e-06	-0.005	-9e-09	-5e-09	-0.1	-1
4e-08	-2e-10	-6e-11	-1	3e-06	-3e-07
-0.002	-1	-5e-06	2e-10	0.0006	0.005
1	-0.002	-1e-08	2e-08	-0.005	0.0006
-4e-09	5e-06	-1	6e-11	-2e-09	-1e-08

The obtained matrices U and V are used to decouple the system as shown in Figure 7.7.

The decoupled plant is then:

$$G_{SVD}(s) = U^{-1}G_u(s)V^{-H}$$

```
Matlab
Gsvd = inv(U)*Gu*inv(V');
```

7.5 Verification of the decoupling using the “Gershgorin Radii”

The “Gershgorin Radii” is computed for the coupled plant $G(s)$, for the “Jacobian plant” $G_x(s)$ and the “SVD Decoupled Plant” $G_{SVD}(s)$:

Table 7.5: Obtained matrix V

-0.2	0.5	-0.4	-0.4	-0.6	-0.2
-0.3	0.5	0.4	-0.4	0.5	0.3
-0.3	-0.5	-0.4	-0.4	0.4	-0.4
-0.2	-0.5	0.4	-0.4	-0.5	0.3
0.6	-0.06	-0.4	-0.4	0.1	0.6
0.6	0.06	0.4	-0.4	-0.006	-0.6

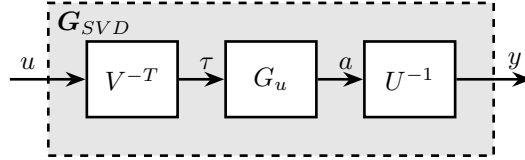


Figure 7.7: Decoupled plant G_{SVD} using the Singular Value Decomposition

The ‘‘Gershgorin Radii’’ of a matrix S is defined by:

$$\zeta_i(j\omega) = \frac{\sum_{j \neq i} |S_{ij}(j\omega)|}{|S_{ii}(j\omega)|}$$

This is computed over the following frequencies.

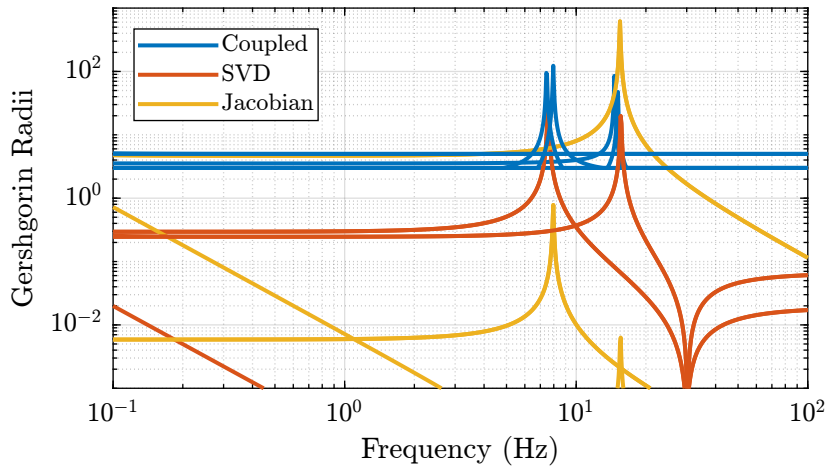


Figure 7.8: Gershgorin Radii of the Coupled and Decoupled plants

7.6 Verification of the decoupling using the ‘‘Relative Gain Array’’

The relative gain array (RGA) is defined as:

$$\Lambda(G(s)) = G(s) \times (G(s)^{-1})^T \quad (7.1)$$

where \times denotes an element by element multiplication and $G(s)$ is an $n \times n$ square transfer matrix.

The obtained RGA elements are shown in Figure 7.9.

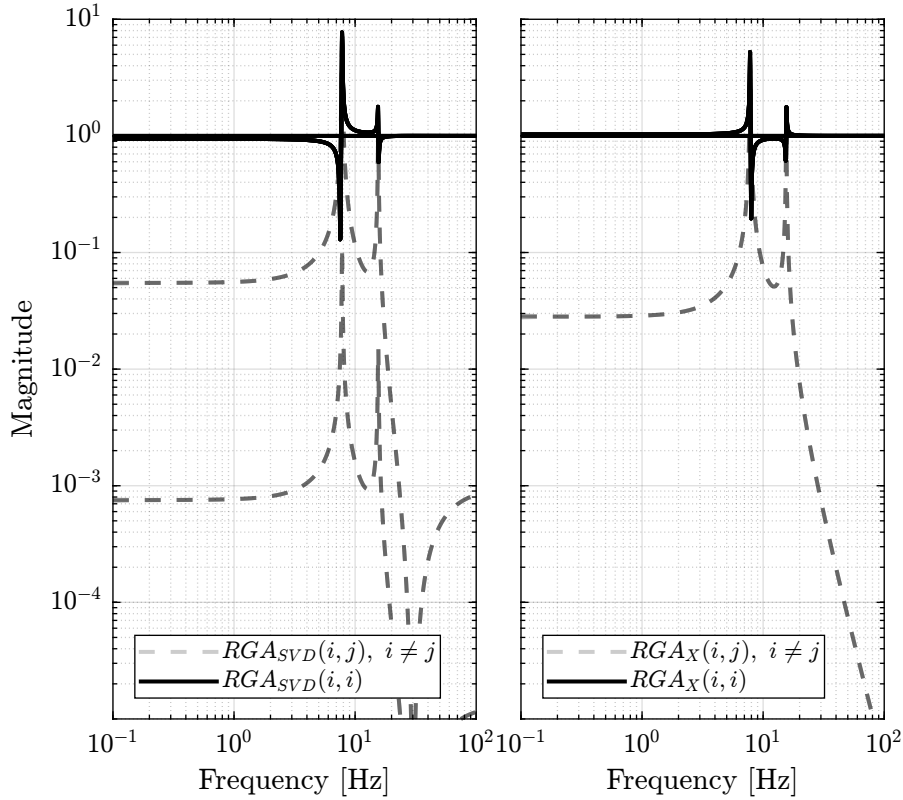


Figure 7.9: Obtained norm of RGA elements for the SVD decoupled plant and the Jacobian decoupled plant

7.7 Obtained Decoupled Plants

The bode plot of the diagonal and off-diagonal elements of G_{SVD} are shown in Figure 7.10.

Similarly, the bode plots of the diagonal elements and off-diagonal elements of the decoupled plant $G_x(s)$ using the Jacobian are shown in Figure 7.11.

7.8 Diagonal Controller

The control diagram for the centralized control is shown in Figure 7.12.

The controller K_c is “working” in an cartesian frame. The Jacobian is used to convert forces in the cartesian frame to forces applied by the actuators.

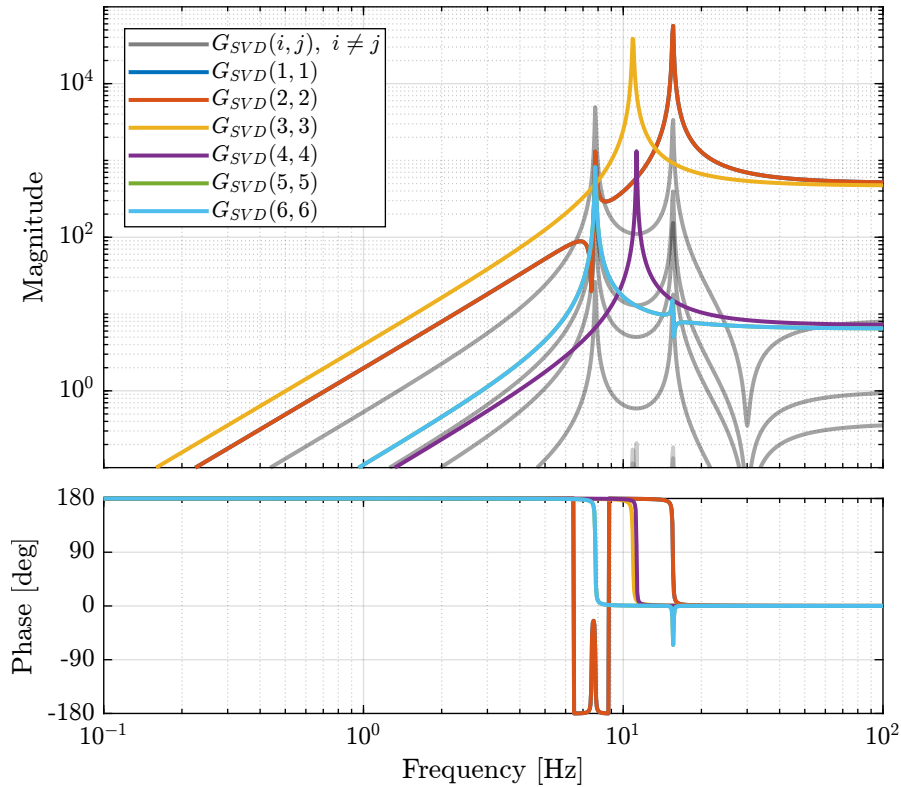


Figure 7.10: Decoupled Plant using SVD

The SVD control architecture is shown in Figure 7.13. The matrices U and V are used to decouple the plant G .

We choose the controller to be a low pass filter:

$$K_c(s) = \frac{G_0}{1 + \frac{s}{\omega_0}}$$

G_0 is tuned such that the crossover frequency corresponding to the diagonal terms of the loop gain is equal to ω_c

```

Matlab
wc = 2*pi*80; % Crossover Frequency [rad/s]
w0 = 2*pi*0.1; % Controller Pole [rad/s]

```

```

Matlab
K_cen = diag(1./diag(abs(evalfr(Gx, j*wc))))*(1/abs(evalfr(1/(1 + s/w0), j*wc)))/(1 + s/w0);
L_cen = K_cen*Gx;
G_cen = feedback(G, pinv(J')*K_cen, [7:12], [1:6]);

```

```

Matlab
K_svd = diag(1./diag(abs(evalfr(Gsvd, j*wc))))*(1/abs(evalfr(1/(1 + s/w0), j*wc)))/(1 + s/w0);
L_svd = K_svd*Gsvd;
G_svd = feedback(G, inv(V')*K_svd*inv(U), [7:12], [1:6]);

```

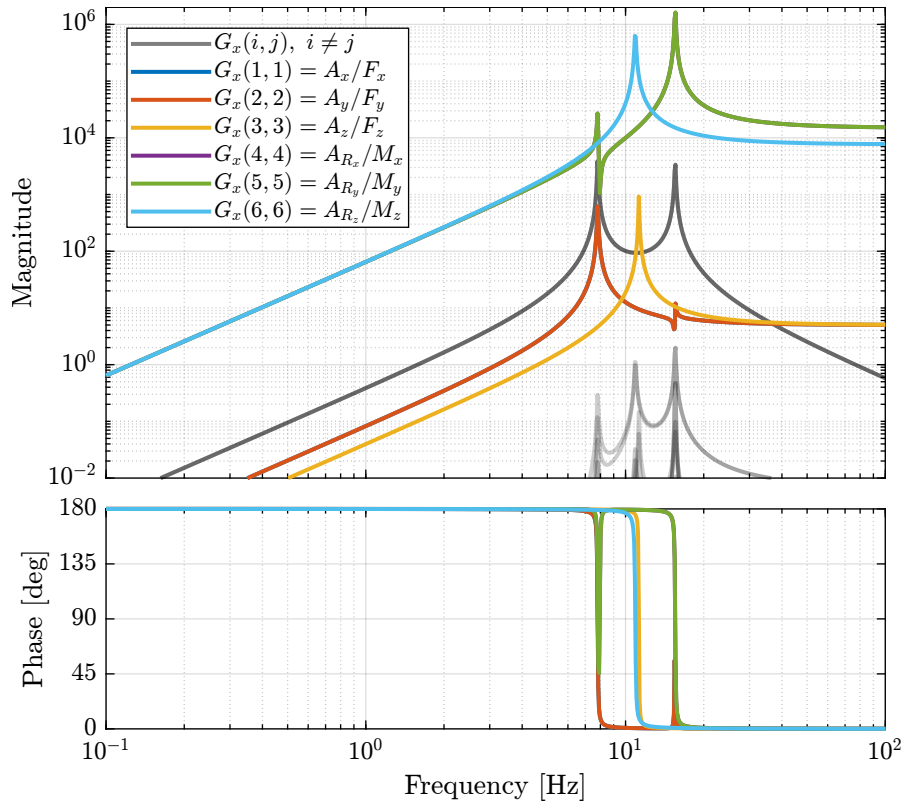



Figure 7.11: Stewart Platform Plant from forces (resp. torques) applied by the legs to the acceleration (resp. angular acceleration) of the platform as well as all the coupling terms between the two (non-diagonal terms of the transfer function matrix)

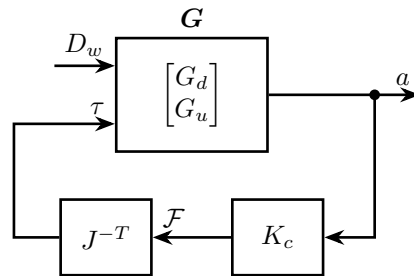


Figure 7.12: Control Diagram for the Centralized control

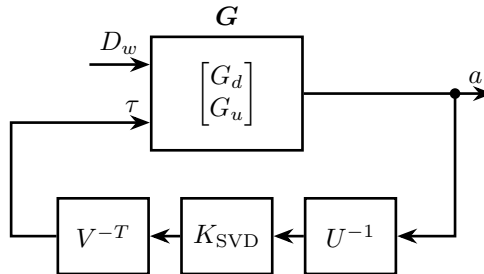


Figure 7.13: Control Diagram for the SVD control

The obtained diagonal elements of the loop gains are shown in Figure 7.14.

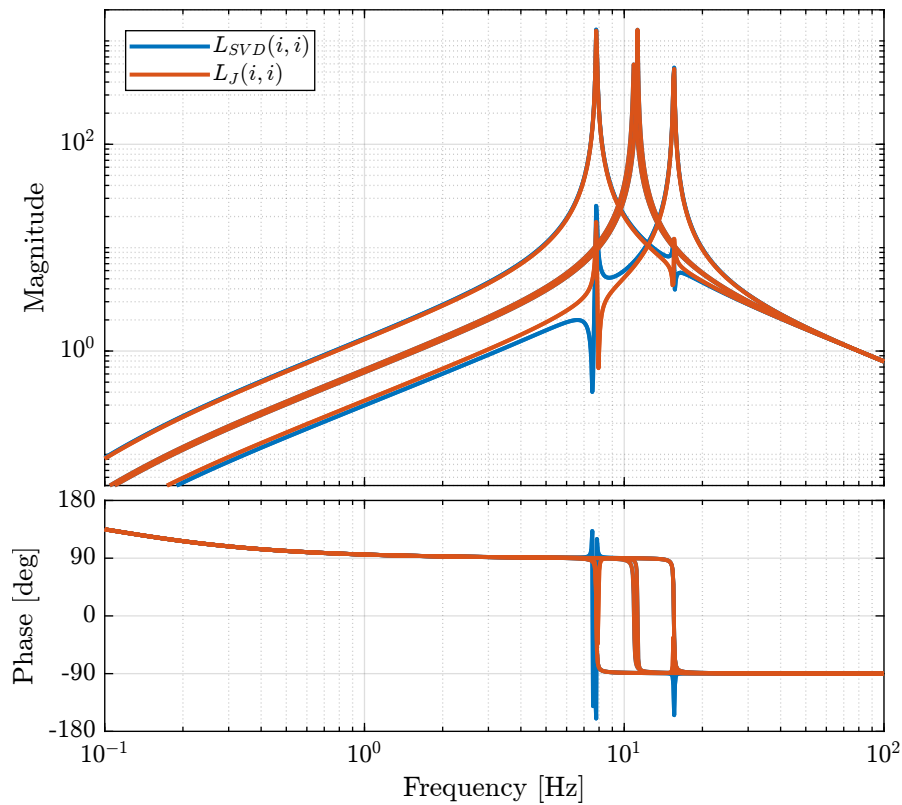


Figure 7.14: Comparison of the diagonal elements of the loop gains for the SVD control architecture and the Jacobian one

7.9 Closed-Loop system Performances

Let's first verify the stability of the closed-loop systems:

```
isstable(G_cen)                                Matlab
```

```
ans =
logical
1                                Results
```

```
isstable(G_svd)                                Matlab
```

```
ans =
logical
1
```

The obtained transmissibility in Open-loop, for the centralized control as well as for the SVD control are shown in Figure 7.15.

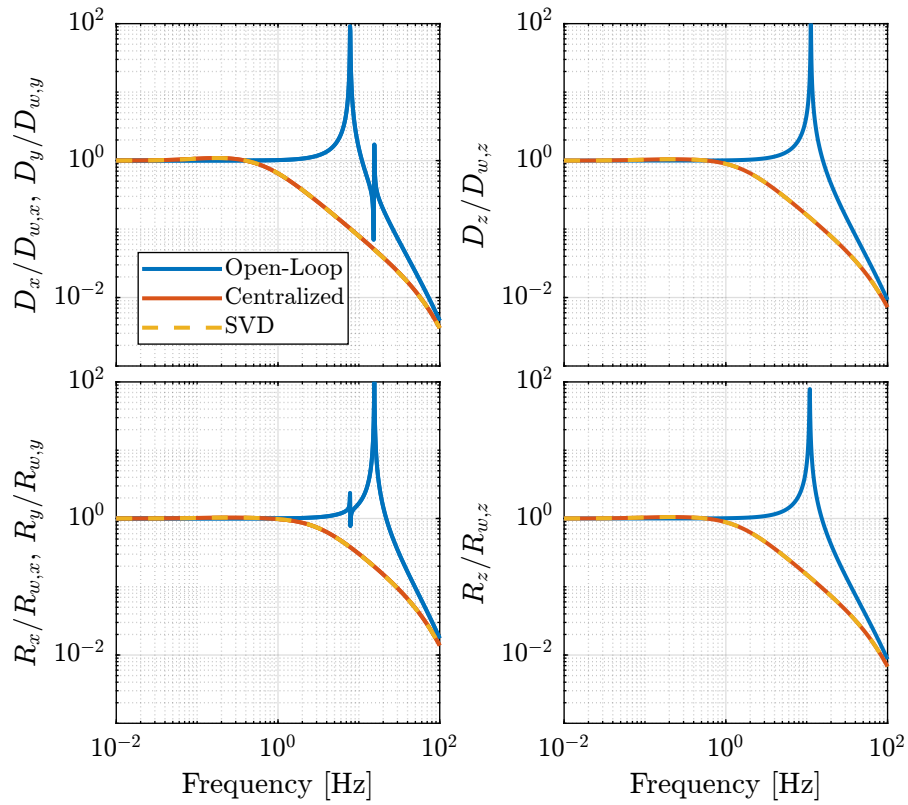


Figure 7.15: Obtained Transmissibility