

# NASS - Short Stroke Metrology

Dehaeze Thomas

February 19, 2021

# Contents

<b>1 Measurement Principle</b>	<b>3</b>
<b>2 X-Y-Z measurement</b>	<b>5</b>
<b>3 Tilt measurement</b>	<b>6</b>
<b>4 Conclusion</b>	<b>7</b>

The goal of this document is to analyze the feasibility of a short stroke metrology system for the NASS using fixed interferometer and the same reflector as for the long stroke metrology system.

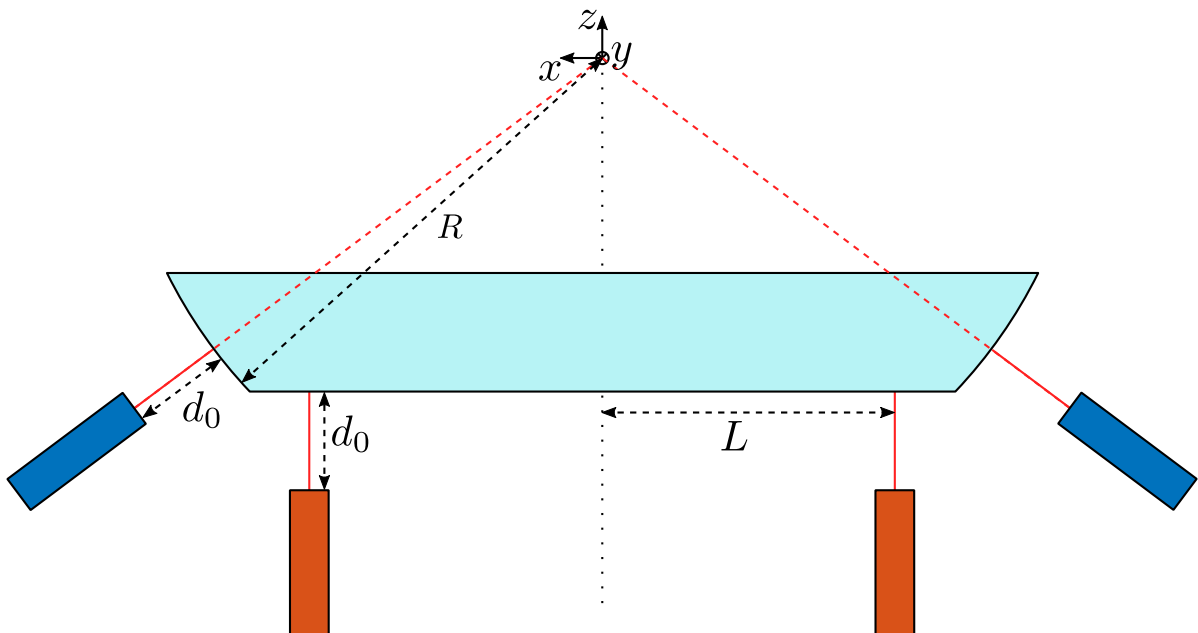
It is structured as follow:

- Section 1: the measurement principle is described.
- Section 2: the requirements for the interferometers measuring translations are described
- Section 3: the same is done for the rotations

# 1 Measurement Principle

Here are the defined wanted displacement of the reflector that should be inside the measurement stroke of the metrology system. The defined translations and rotations are defined with respect to the frame shown in Figure 1.1.

```
Matlab
d_x = 0; % Wanted translation of the reflector in the x direction [m]
d_y = 1e-3; % Wanted translation of the reflector in the y direction [m]
d_z = 1e-3; % Wanted translation of the reflector in the z direction [m]
R_x = 10e-3; % Wanted rotation of the reflector along the x axis [rad]
R_y = 0; % Wanted rotation of the reflector along the y axis [rad]
```



**Figure 1.1:** Short Stroke Metrology - Concept. Blue interferometers are used to measure the X-Y-Z motion of the reflector. Red interferometers are used to measure tilt motion of the reflector.

Here are the approximate dimensions shown in Figure 1.1:

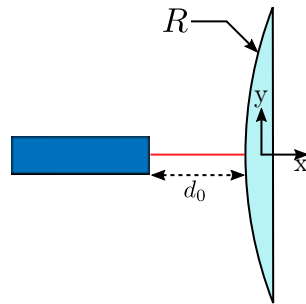
- $d_0 \approx 10 [mm]$
- $L \approx 150 [mm]$
- $R \approx 250 [mm]$

```
d0 = 10e-3; % [m]  
L = 150e-3; % [m]  
R = 250e-3; % [m]
```

## 2 X-Y-Z measurement

The geometry for the interferometers measuring translations is shown in Figure 2.1:

- $R = 250 [mm]$
- $d_0 > 10 [mm]$
- $d_x = \pm 1 [mm]$
- $d_y = \pm 1 [mm]$



**Figure 2.1:** Interferometers that are measuring translation

The angle of the reflected beam is approximately equal to:

$$\theta \approx 2 \frac{d_y}{R} \quad (2.1)$$

And we obtain:

$$\theta \approx 8.0 [mrad]$$

**Table 2.1:** Specifications for the translation interferometers

Specification	Value
Axial Acceptance	$\pm 1 [mm]$
Angular Acceptance	$\pm 8 [mrad]$
Distance to target	$10 [mm]$
Target	Convex with $R = 250 [mm]$

### 3 Tilt measurement

The tilt  $\theta$  of the flat mirror is directly equal to the tilt of the reflector. However, the  $z$  displacement on the flat part is equal to:

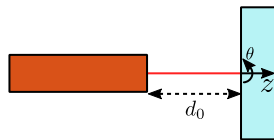
$$z \approx d_z + L\theta_y \tag{3.1}$$

And we obtain:

$$z \approx 2.5 [mm]$$

The geometry for the interferometers measuring rotations is shown in Figure 3.1:

- $d_0 > 10 [mm]$
- $\theta = \pm 10 [mrad]$
- $z = \pm 2.5 [mm]$



**Figure 3.1:** Interferometers that are measuring tilt

**Table 3.1:** Specifications for the rotation interferometers

Specification	Value
Axial Acceptance	$\pm 2.5 [mm]$
Angular Acceptance	$\pm 10 [mrad]$
Distance to target	$10 [mm]$
Target	Flat mirror

## 4 Conclusion