

Active Damping of Rotating Platforms using Integral Force Feedback

Thomas Dehaeze^{1,3} and Christophe Collette^{1,2}

¹ Precision Mechatronics Laboratory, University of Liege, Belgium

² BEAMS Department, Free University of Brussels, Belgium

³ European Synchrotron Radiation Facility, Grenoble, France

E-mail: dehaeze.thomas@gmail.com

November 2020

Abstract. This paper investigates the use of Integral Force Feedback (IFF) for the active damping of rotating mechanical systems. Guaranteed stability, typical benefit of IFF, is lost as soon as the system is rotating due to gyroscopic effects. To overcome this issue, two modifications of the classical IFF control scheme are proposed. The first consists of slightly modifying the control law while the second consists of adding springs in parallel with the force sensors. Conditions for stability and optimal parameters are derived. The results reveal that, despite their different implementations, both modified IFF control scheme have almost identical damping authority on suspension modes.

Keywords: Active Damping, IFF

1. Introduction

There is an increasing need to reduce the undesirable vibration of many sensitive equipment. A common method to reduce vibration is to mount the sensitive equipment on a suspended platform which attenuates the vibrations above the frequency of the suspension modes. In order to further decrease the residual vibrations, active damping can be used for reducing the magnification of the response in the vicinity of the resonances.

In [1], the Integral Force Feedback (IFF) control scheme has been proposed, where a force sensor, a force actuator and an integral controller are used to directly augment the damping of a mechanical system. When the force sensor is collocated with the actuator, the open-loop transfer function has alternating poles and zeros which facilitate to guarantee the stability of the closed loop system [2].

However, when the platform is rotating, gyroscopic effects alter the system dynamics and IFF cannot be applied as is. The purpose of this paper is to study how the IFF strategy can be adapted to deal with these Gyroscopic effects.

The paper is structured as follows. Section 2 presents a simple model of a rotating suspended platform that will be used throughout this study. Section 3 explains how the unconditional stability of IFF is lost due to Gyroscopic effects induced by the rotation. Section 4 suggests a simple modification of the control law such that damping can be added to the suspension modes in a robust way. Section 5 proposes to add springs in parallel with the force sensors to regain the unconditional stability of IFF. Section 6 compares both proposed modifications to the classical IFF in terms of damping authority and closed-loop system behavior.

2. Dynamics of Rotating Platforms

In order to study how the rotation does affect the use of IFF, a model of a suspended platform on top of a rotating stage is used. Figure 1 represents the model schematically which is the simplest in which gyroscopic forces can be studied.

The rotating stage is supposed to be ideal, meaning it induces a perfect rotation $\theta(t) = \Omega t$ where Ω is the rotational speed in rad s^{-1} .

The suspended platform consists of two orthogonal actuators represented by three elements in parallel: a spring with a stiffness k in Nm^{-1} , a dashpot with a damping coefficient c in Nm^{-1}s and an ideal force source F_u, F_v . A payload with a mass m in kg, representing the sensitive equipment, is mounted on the (rotating) suspended platform.

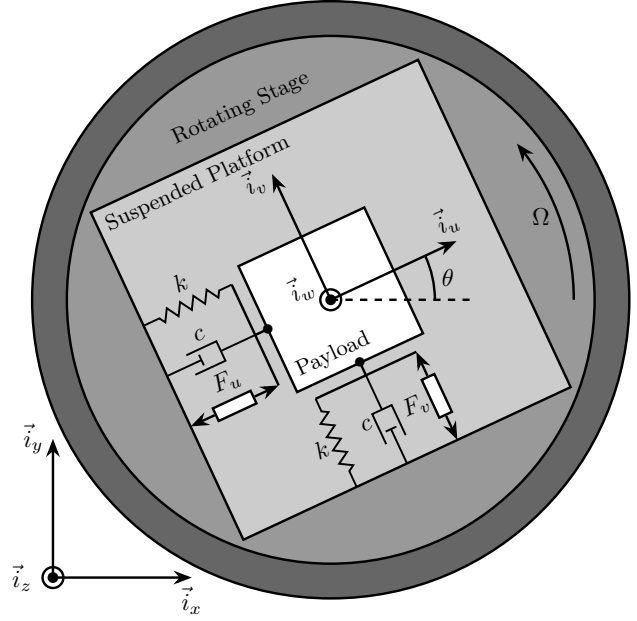


Figure 1: Schematic of the studied System

Two reference frames are used: an inertial frame $(\vec{i}_x, \vec{i}_y, \vec{i}_z)$ and a uniform rotating frame $(\vec{i}_u, \vec{i}_v, \vec{i}_w)$ rigidly fixed on top of the rotating stage with \vec{i}_w aligned with the rotation axis. The position of the payload is represented by $(d_u, d_v, 0)$ expressed in the rotating frame.

To obtain the equations of motion for the system represented in Figure 1, the Lagrangian equations are used:

$$\frac{d}{dt} \left(\frac{\partial L}{\partial \dot{q}_i} \right) + \frac{\partial D}{\partial \dot{q}_i} - \frac{\partial L}{\partial q_i} = Q_i \quad (1)$$

with $L = T - V$ the Lagrangian, T the kinetic coenergy, V the potential energy, D the dissipation function, and Q_i the generalized force associated with the generalized variable $[q_1 \ q_2] = [d_u \ d_v]$. The equation of motion corresponding to the constant rotation in the (\vec{i}_x, \vec{i}_y) plane is disregarded as the motion is considered to be imposed by the rotation stage.

$$\begin{aligned} T &= \frac{1}{2} m \left((\dot{d}_u - \Omega d_v)^2 + (\dot{d}_v + \Omega d_u)^2 \right), \\ V &= \frac{1}{2} k (d_u^2 + d_v^2), \quad Q_1 = F_u, \\ D &= \frac{1}{2} c (\dot{d}_u^2 + \dot{d}_v^2), \quad Q_2 = F_v \end{aligned} \quad (2)$$

Substituting equations (2) into (1) for both generalized coordinates gives two coupled differential equations

$$m \ddot{d}_u + c \dot{d}_u + (k - m \Omega^2) d_u = F_u + 2m \Omega \dot{d}_v \quad (3a)$$

$$m \ddot{d}_v + c \dot{d}_v + \underbrace{(k - m \Omega^2)}_{\text{Centrif.}} d_v = \underbrace{F_v - 2m \Omega \dot{d}_u}_{\text{Coriolis}} \quad (3b)$$

The uniform rotation of the system induces two Gyroscopic effects as shown in (3):

- Centrifugal forces: that can be seen as added negative stiffness $-m\Omega^2$ along \vec{i}_u and \vec{i}_v
- Coriolis Forces: that couples the motion in the two orthogonal directions

One can verify that without rotation ($\Omega = 0$) the system becomes equivalent to two uncoupled one degree of freedom mass-spring-damper systems:

$$m\ddot{d}_u + c\dot{d}_u + kd_u = F_u \quad (4a)$$

$$m\ddot{d}_v + c\dot{d}_v + kd_v = F_v \quad (4b)$$

To study the dynamics of the system, the differential equations of motions (3) are transformed in the Laplace domain and the 2×2 transfer function matrix \mathbf{G}_d from $[F_u \ F_v]$ to $[d_u \ d_v]$ is obtained.

$$\begin{bmatrix} d_u \\ d_v \end{bmatrix} = \mathbf{G}_d \begin{bmatrix} F_u \\ F_v \end{bmatrix} \quad (5)$$

$$\begin{aligned} \mathbf{G}_d(1,1) &= \frac{ms^2 + cs + k - m\Omega^2}{(ms^2 + cs + k - m\Omega^2)^2 + (2m\Omega s)^2} \quad (6a) \\ &= \mathbf{G}_d(2,2) \end{aligned}$$

$$\begin{aligned} \mathbf{G}_d(1,2) &= \frac{2m\Omega s}{(ms^2 + cs + k - m\Omega^2)^2 + (2m\Omega s)^2} \quad (6b) \\ &= -\mathbf{G}_d(2,1) \end{aligned}$$

To simplify the analysis, the undamped natural frequency ω_0 and the damping ratio ξ are used

$$\omega_0 = \sqrt{\frac{k}{m}} \text{ in rad s}^{-1}, \quad \xi = \frac{c}{2\sqrt{km}} \quad (7)$$

The transfer function matrix \mathbf{G}_d becomes equal to

$$\mathbf{G}_d(1,1) = \frac{\frac{1}{k} \left(\frac{s^2}{\omega_0^2} + 2\xi \frac{s}{\omega_0} + 1 - \frac{\Omega^2}{\omega_0^2} \right)}{\left(\frac{s^2}{\omega_0^2} + 2\xi \frac{s}{\omega_0} + 1 - \frac{\Omega^2}{\omega_0^2} \right)^2 + \left(2\frac{\Omega}{\omega_0} \frac{s}{\omega_0} \right)^2} \quad (8a)$$

$$\mathbf{G}_d(1,2) = \frac{\frac{1}{k} \left(2\frac{\Omega}{\omega_0} \frac{s}{\omega_0} \right)}{\left(\frac{s^2}{\omega_0^2} + 2\xi \frac{s}{\omega_0} + 1 - \frac{\Omega^2}{\omega_0^2} \right)^2 + \left(2\frac{\Omega}{\omega_0} \frac{s}{\omega_0} \right)^2} \quad (8b)$$

For all further numerical analysis in this study, we consider $\omega_0 = 1 \text{ rad s}^{-1}$, $k = 1 \text{ N m}^{-1}$ and $\xi = 0.025 = 2.5\%$. Even though no system with such parameters will be encountered in practice, conclusions can be drawn relative to these parameters such that they can be generalized to any other set of parameters.

The poles of \mathbf{G}_d are the complex solutions p of (9).

$$\left(\frac{p^2}{\omega_0^2} + 2\xi \frac{p}{\omega_0} + 1 - \frac{\Omega^2}{\omega_0^2} \right)^2 + \left(2\frac{\Omega}{\omega_0} \frac{p}{\omega_0} \right)^2 = 0 \quad (9)$$

Supposing small damping ($\xi \ll 1$), two pairs of complex conjugate poles are obtained (10).

$$p_+ = -\xi\omega_0 \left(1 + \frac{\Omega}{\omega_0} \right) \pm j\omega_0 \left(1 + \frac{\Omega}{\omega_0} \right) \quad (10a)$$

$$p_- = -\xi\omega_0 \left(1 - \frac{\Omega}{\omega_0} \right) \pm j\omega_0 \left(1 - \frac{\Omega}{\omega_0} \right) \quad (10b)$$

The real part and complex part of these two pairs of complex conjugate poles are represented in Figure 2 as a function of the rotational speed Ω . As the rotational speed increases, p_+ goes to higher frequencies and p_- to lower frequencies. The system becomes unstable for $\Omega > \omega_0$ as the real part of p_- is positive. Physically, the negative stiffness term $-m\Omega^2$ induced by centrifugal forces exceeds the spring stiffness k .

In the rest of this study, rotational speeds smaller than the undamped natural frequency of the system are assumed ($\Omega < \omega_0$).

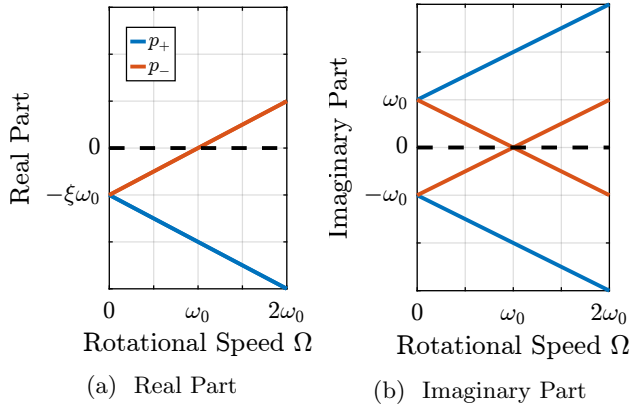


Figure 2: Campbell Diagram : Evolution of the complex and real parts of the system's poles as a function of the rotational speed Ω

Looking at the transfer function matrix \mathbf{G}_d in Eq. (8), one can see that the two diagonal (direct) terms are equal and the two off-diagonal (coupling) terms are opposite. The bode plot of these two terms are shown in Figure 3 for several rotational speeds Ω . These plots confirm the expected behavior: the frequency of the two pairs of complex conjugate poles are further separated as Ω increases. For $\Omega > \omega_0$, the low frequency pair of complex conjugate poles p_- becomes unstable.

3. Decentralized Integral Force Feedback

In order to apply IFF to the system, force sensors are added in series with the two actuators (Figure 4). As this study focuses on decentralized control,

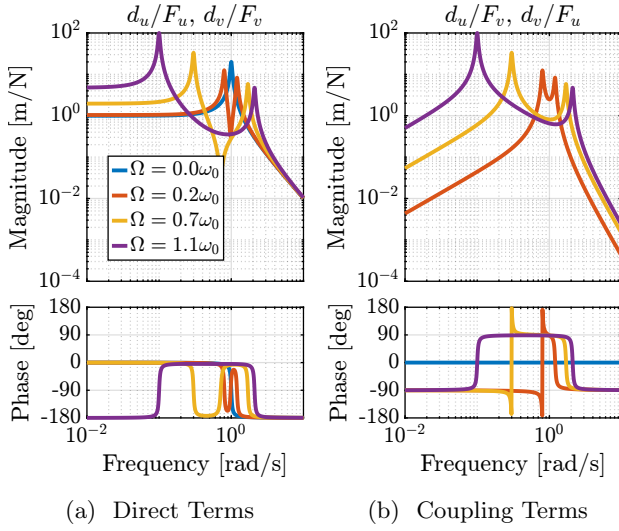


Figure 3: Bode Plots for \mathbf{G}_d for several rotational speed Ω

two identical controllers K_F are used to feedback each of the sensed force to its associated actuator and no attempt is made to counteract the interactions in the system. The control diagram is schematically shown in Figure 5.

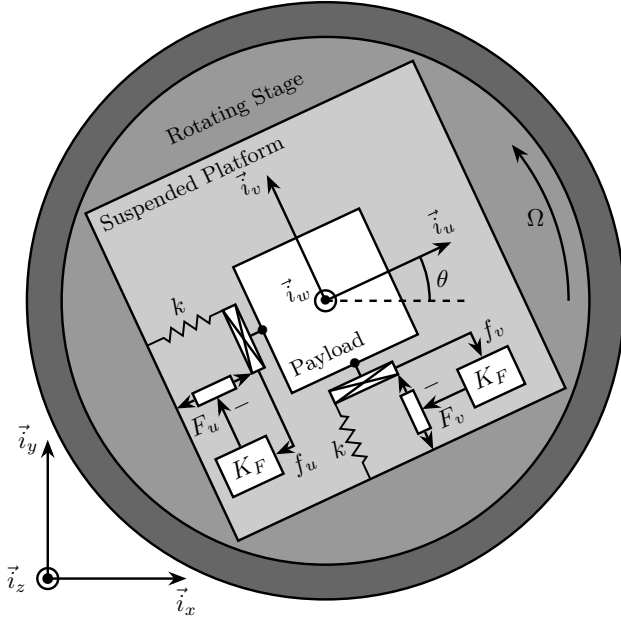


Figure 4: System with added Force Sensor in series with the actuators

The forces $[f_u \ f_v]$ measured by the two force sensors represented in Figure 4 are equal to

$$\begin{bmatrix} f_u \\ f_v \end{bmatrix} = \begin{bmatrix} F_u \\ F_v \end{bmatrix} - (cs + k) \begin{bmatrix} d_u \\ d_v \end{bmatrix} \quad (11)$$

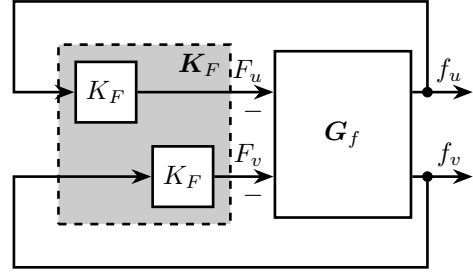


Figure 5: Control Diagram for decentralized IFF

Inserting (8) into (11) yields

$$\begin{bmatrix} f_u \\ f_v \end{bmatrix} = \mathbf{G}_f \begin{bmatrix} F_u \\ F_v \end{bmatrix} \quad (12)$$

$$\mathbf{G}_f(1,1) = \frac{\left(\frac{s^2}{\omega_0^2} - \frac{\Omega^2}{\omega_0^2}\right)\left(\frac{s^2}{\omega_0^2} + 2\xi\frac{s}{\omega_0} + 1 - \frac{\Omega^2}{\omega_0^2}\right) + \left(2\frac{\Omega}{\omega_0}\frac{s}{\omega_0}\right)^2}{\left(\frac{s^2}{\omega_0^2} + 2\xi\frac{s}{\omega_0} + 1 - \frac{\Omega^2}{\omega_0^2}\right)^2 + \left(2\frac{\Omega}{\omega_0}\frac{s}{\omega_0}\right)^2} \quad (13a)$$

$$\mathbf{G}_f(1,2) = \frac{-(2\xi\frac{s}{\omega_0} + 1)\left(2\frac{\Omega}{\omega_0}\frac{s}{\omega_0}\right)}{\left(\frac{s^2}{\omega_0^2} + 2\xi\frac{s}{\omega_0} + 1 - \frac{\Omega^2}{\omega_0^2}\right)^2 + \left(2\frac{\Omega}{\omega_0}\frac{s}{\omega_0}\right)^2} \quad (13b)$$

The zeros of the diagonal terms of \mathbf{G}_f are equal to (neglecting the damping for simplicity)

$$z_c = \pm j\omega_0 \sqrt{\frac{1}{2} \sqrt{8\frac{\Omega^2}{\omega_0^2} + 1} + \frac{\Omega^2}{\omega_0^2} + \frac{1}{2}} \quad (14a)$$

$$z_r = \pm \omega_0 \sqrt{\frac{1}{2} \sqrt{8\frac{\Omega^2}{\omega_0^2} + 1} - \frac{\Omega^2}{\omega_0^2} - \frac{1}{2}} \quad (14b)$$

The frequency of the pair of complex conjugate zeros z_c (14a) always lies between the frequency of the two pairs of complex conjugate poles p_- and p_+ (10).

For non-null rotational speeds, two real zeros z_r (14b) appear in the diagonal terms inducing a non-minimum phase behavior. This can be seen in the Bode plot of the diagonal terms (Figure 6) where the low frequency gain is no longer zero while the phase stays at 180° .

The low frequency gain of \mathbf{G}_f increases with the rotational speed Ω

$$\lim_{\omega \rightarrow 0} |\mathbf{G}_f(j\omega)| = \begin{bmatrix} \frac{\Omega^2}{\omega_0^2 - \Omega^2} & 0 \\ 0 & \frac{\Omega^2}{\omega_0^2 - \Omega^2} \end{bmatrix} \quad (15)$$

This can be explained as follows: a constant force F_u induces a small displacement of the mass $d_u = \frac{F_u}{k - m\Omega^2}$, which increases the centrifugal force $m\Omega^2 d_u = \frac{\Omega^2}{\omega_0^2 - \Omega^2} F_u$ which is then measured by the force sensors.

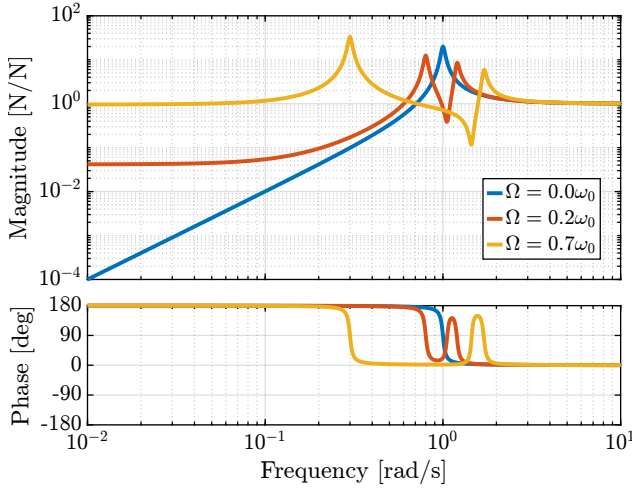


Figure 6: Bode plot of the dynamics from a force actuator to its collocated force sensor (f_u/F_u , f_v/F_v) for several rotational speeds Ω

The two IFF controllers K_F consist of a pure integrator

$$\mathbf{K}_F(s) = \begin{bmatrix} K_F(s) & 0 \\ 0 & K_F(s) \end{bmatrix} \quad (16)$$

$$K_F(s) = g \cdot \frac{1}{s}$$

where g is a scalar representing the gain of the controller.

In order to see how the IFF affects the poles of the closed loop system, a Root Locus plot (Figure 7) is constructed as follows: the poles of the closed-loop system are drawn in the complex plane as the controller gain g varies from 0 to ∞ for the two controllers K_F simultaneously. As explained in [3, 4], the closed-loop poles start at the open-loop poles (shown by \times) for $g = 0$ and coincide with the transmission zeros (shown by \circ) as $g \rightarrow \infty$. The direction of increasing gain is indicated by arrows \blacktriangleright .

Whereas collocated IFF is usually associated with unconditional stability [5], this property is lost as soon as the rotational speed is non-null due to gyroscopic effects. This can be seen in the Root Locus plot (Figure 7) where the poles corresponding to the controller are bound to the right half plane implying closed-loop system instability.

Physically, this can be explained like so: at low frequency, the loop gain is very large due to the pure integrators in K_F . The control system is thus canceling the spring forces which makes the suspended platform not able to hold the payload against centrifugal forces, hence the instability.

In order to apply decentralized IFF on rotating platforms, two solutions are proposed to deal with this instability problem. The first one consists of slightly

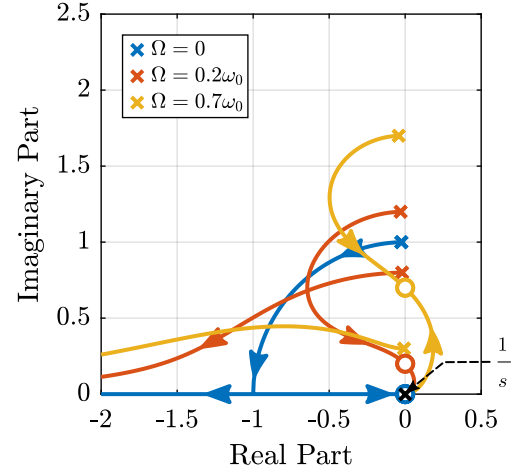


Figure 7: Root Locus: evolution of the closed-loop poles with increasing controller gains g

modifying the control law (Section 4) while the second one consists of adding springs in parallel with the force sensors (Section 5).

4. Integral Force Feedback with High Pass Filter

As was explained in the previous section, the instability comes in part from the high gain at low frequency caused by the pure integrators.

In order to limit this low frequency controller gain, an high pass filter (HPF) can be added to the controller

$$K_F(s) = g \cdot \frac{1}{s} \cdot \underbrace{\frac{s/\omega_i}{1 + s/\omega_i}}_{\text{HPF}} = g \cdot \frac{1}{s + \omega_i} \quad (17)$$

This is equivalent to slightly shifting the controller pole to the left along the real axis.

This modification of the IFF controller is typically done to avoid saturation associated with the pure integrator [5]. This is however not the case in this study as it will become clear in the next section.

The loop gains, $K_F(s)$ times the direct dynamics f_u/F_u , with and without the added HPF are shown in Figure 8. The effect of the added HPF limits the low frequency gain as expected.

The Root Loci for the decentralized IFF with and without the HPF are displayed in Figure 9. With the added HPF, the poles of the closed loop system are shown to be stable up to some value of the gain g_{\max}

$$g_{\max} = \omega_i \left(\frac{\omega_0^2}{\Omega^2} - 1 \right) \quad (18)$$

It is interesting to note that g_{\max} also corresponds to the gain where the low frequency loop gain (Figure 8) reaches one.

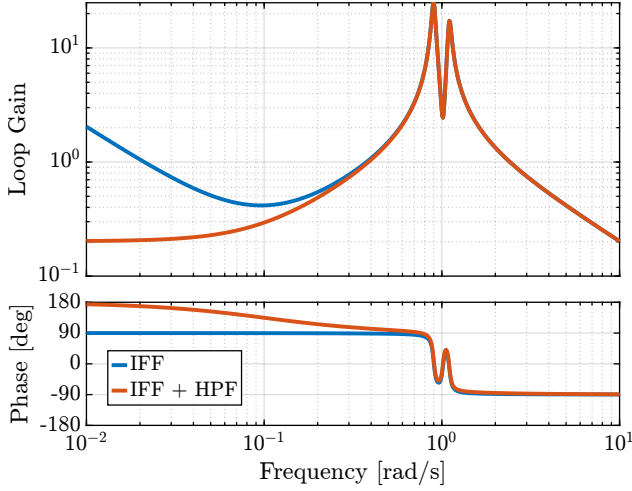


Figure 8: Modification of the loop gain with the added HPF, $g = 2$, $\omega_i = 0.1\omega_0$ and $\Omega = 0.1\omega_0$

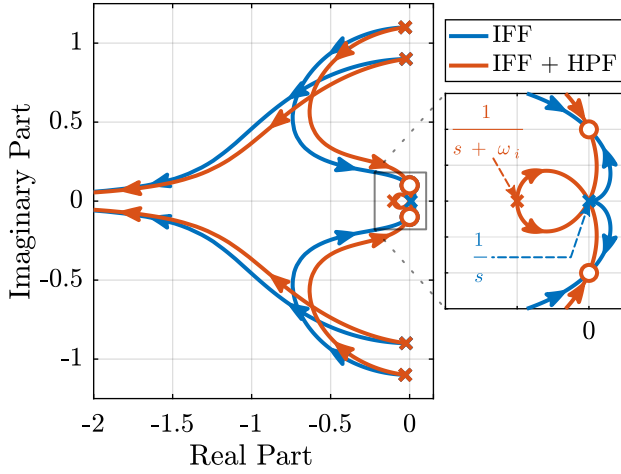


Figure 9: Modification of the Root Locus with the added HPF, $\omega_i = 0.1\omega_0$ and $\Omega = 0.1\omega_0$

Two parameters can be tuned for the modified controller (17): the gain g and the pole's location ω_i . The optimal values of ω_i and g are here considered as the values for which the damping of all the closed-loop poles are simultaneously maximized.

In order to visualize how ω_i does affect the attainable damping, the Root Loci for several ω_i are displayed in Figure 10. It is shown that even though small ω_i seem to allow more damping to be added to the suspension modes, the control gain g may be limited to small values due to (18).

In order to study this trade off, the attainable closed-loop damping ratio ξ_{cl} is computed as a function of ω_i/ω_0 . The gain g_{opt} at which this maximum damping is obtained is also displayed and compared with the gain g_{max} at which the system becomes unstable (Figure 11).

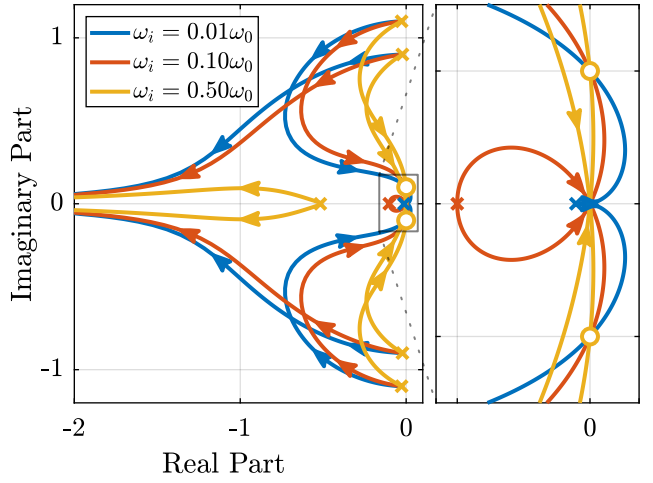


Figure 10: Root Locus for several HPF cut-off frequencies ω_i , $\Omega = 0.1\omega_0$

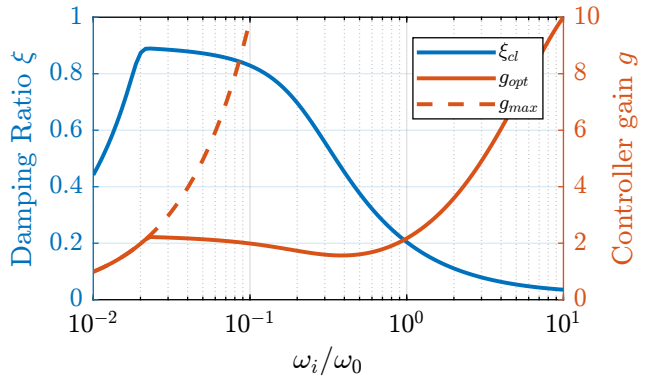


Figure 11: Attainable damping ratio ξ_{cl} as a function of ω_i/ω_0 . Corresponding control gain g_{opt} and g_{max} are also shown

Three regions can be observed:

- $\omega_i/\omega_0 < 0.02$: the added damping is limited by the maximum allowed control gain g_{max}
- $0.02 < \omega_i/\omega_0 < 0.2$: the attainable damping ratio is maximized and is reached for $g \approx 2$
- $0.2 < \omega_i/\omega_0$: the added damping decreases as ω_i/ω_0 increases

5. Integral Force Feedback with Parallel Springs

In this section additional springs in parallel with the force sensors are added to counteract the negative stiffness induced by the rotation. Such springs are schematically shown in Figure 12 where k_a is the stiffness of the actuator and k_p the stiffness in parallel with the actuator and force sensor.

Amplified piezoelectric stack actuators can also be used for such purpose where a part of the piezoelectric

stack is used as an actuator while the rest is used as a force sensor [6]. The parallel stiffness k_p then corresponds to the amplification structure. An example of such system is shown in Figure 13.

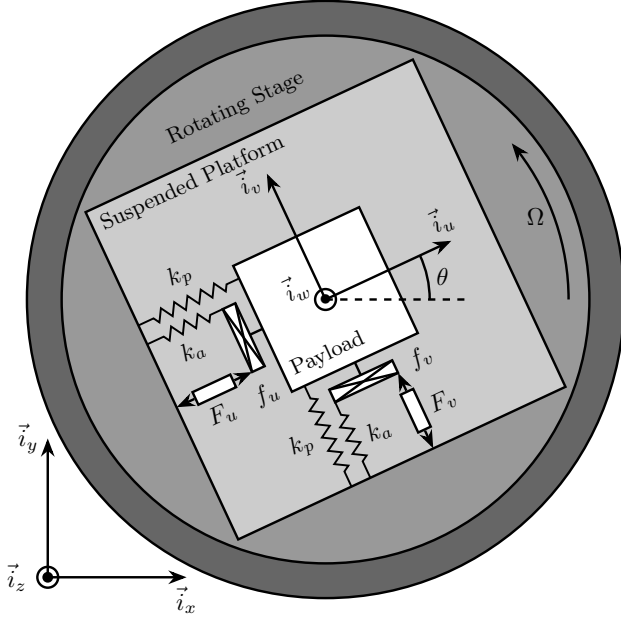


Figure 12: Studied system with additional springs in parallel with the actuators and force sensors



Figure 13: XY Piezoelectric Stage (XY25XS from Cedrat Technology)

The forces $[f_u \ f_v]$ measured by the two force sensors represented in Figure 12 are equal to

$$\begin{bmatrix} f_u \\ f_v \end{bmatrix} = \begin{bmatrix} F_u \\ F_v \end{bmatrix} - (cs + k_a) \begin{bmatrix} d_u \\ d_v \end{bmatrix} \quad (19)$$

In order to keep the overall stiffness $k = k_a + k_p$ constant, thus not modifying the open-loop poles as k_p is changed, a scalar parameter α ($0 \leq \alpha < 1$) is defined to describe the fraction of the total stiffness in parallel with the actuator and force sensor

$$k_p = \alpha k, \quad k_a = (1 - \alpha)k \quad (20)$$

The equations of motion are derived and transformed in the Laplace domain

$$\begin{bmatrix} f_u \\ f_v \end{bmatrix} = \mathbf{G}_k \begin{bmatrix} F_u \\ F_v \end{bmatrix} \quad (21)$$

$$\mathbf{G}_k(1, 1) = \dots$$

$$\frac{\left(\frac{s^2}{\omega_0^2} - \frac{\Omega^2}{\omega_0^2} + \alpha\right) \left(\frac{s^2}{\omega_0^2} + 2\xi \frac{s}{\omega_0} + 1 - \frac{\Omega^2}{\omega_0^2}\right) + \left(2 \frac{\Omega}{\omega_0} \frac{s}{\omega_0}\right)^2}{\left(\frac{s^2}{\omega_0^2} + 2\xi \frac{s}{\omega_0} + 1 - \frac{\Omega^2}{\omega_0^2}\right)^2 + \left(2 \frac{\Omega}{\omega_0} \frac{s}{\omega_0}\right)^2} \quad (22a)$$

$$\mathbf{G}_k(1, 2) = \frac{-(2\xi \frac{s}{\omega_0} + 1 - \alpha) \left(2 \frac{\Omega}{\omega_0} \frac{s}{\omega_0}\right)}{\left(\frac{s^2}{\omega_0^2} + 2\xi \frac{s}{\omega_0} + 1 - \frac{\Omega^2}{\omega_0^2}\right)^2 + \left(2 \frac{\Omega}{\omega_0} \frac{s}{\omega_0}\right)^2} \quad (22b)$$

Comparing \mathbf{G}_k (22) with \mathbf{G}_f (13) shows that while the poles of the system are kept the same, the zeros of the diagonal terms have changed. The two real zeros z_r (14b) that were inducing non-minimum phase behavior are transformed into complex conjugate zeros if the following condition hold

$$\alpha > \frac{\Omega^2}{\omega_0^2} \Leftrightarrow k_p > m\Omega^2 \quad (23)$$

Thus, if the added parallel stiffness k_p is higher than the negative stiffness induced by centrifugal forces $m\Omega^2$, the direct dynamics from actuator to force sensor will show minimum phase behavior. This is confirmed by the Bode plot of the direct dynamics in Figure 14.

Figure 15 shows Root Loci plots for $k_p = 0$, $k_p < m\Omega^2$ and $k_p > m\Omega^2$ when K_F is a pure integrator (16). It is shown that if the added stiffness is higher than the maximum negative stiffness, the poles of the closed-loop system stay in the (stable) right half-plane, and hence the unconditional stability of IFF is recovered.

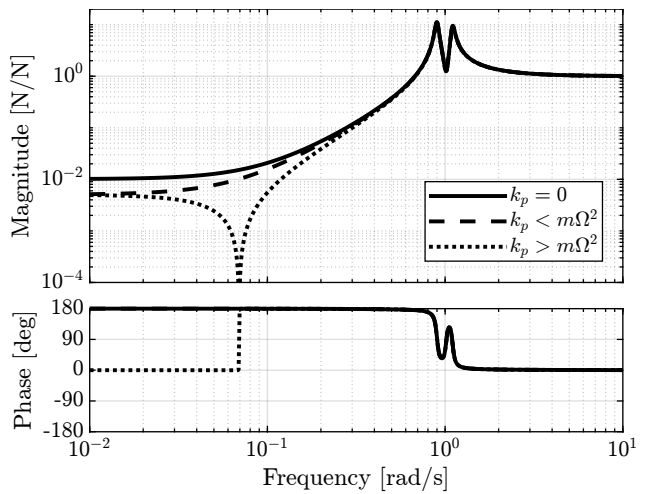


Figure 14: Bode plot of f_u/F_u without parallel spring, with parallel springs with stiffness $k_p < m\Omega^2$ and $k_p > m\Omega^2$, $\Omega = 0.1\omega_0$

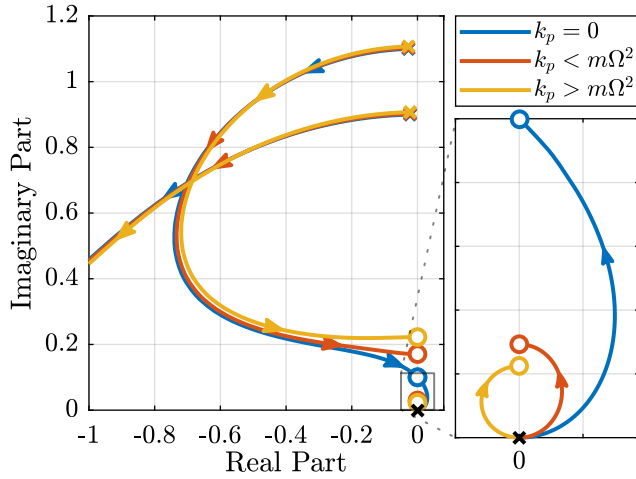


Figure 15: Root Locus for IFF without parallel spring, with parallel springs with stiffness $k_p < m\Omega^2$ and $k_p > m\Omega^2$, $\Omega = 0.1\omega_0$

Even though the parallel stiffness k_p has no impact on the open-loop poles (as the overall stiffness k stays constant), it has a large impact on the transmission zeros. Moreover, as the attainable damping is generally proportional to the distance between poles and zeros [7], the parallel stiffness k_p is foreseen to have a large impact on the attainable damping.

To study this effect, Root Locus plots for several parallel stiffnesses $k_p > m\Omega^2$ are shown in Figure 16. The frequencies of the transmission zeros of the system are increasing with the parallel stiffness k_p and the associated attainable damping is reduced. Therefore, even though the parallel stiffness k_p should be larger than $m\Omega^2$ for stability reasons, it should not be taken too high as this would limit the attainable bandwidth.

This is confirmed in Figure 17 where the attainable closed-loop damping ratio ξ_{cl} and the associated control gain g_{opt} are computed as a function of α .

6. Comparison and Discussion

Two modifications to adapt the IFF control strategy to rotating platforms have been proposed in Sections 4 and 5. These two methods are now compared in terms of added damping, closed-loop compliance and transmissibility.

For the following comparisons, the cut-off frequency for the HPF is set to $\omega_i = 0.1\omega_0$ and the stiffness of the parallel springs is set to $k_p = 5m\Omega^2$.

Figure 18 shows the Root Loci for the two proposed IFF modifications. While the two pairs of complex conjugate open-loop poles are identical for both techniques, the transmission zeros are not. This means that the closed-loop behavior of both systems

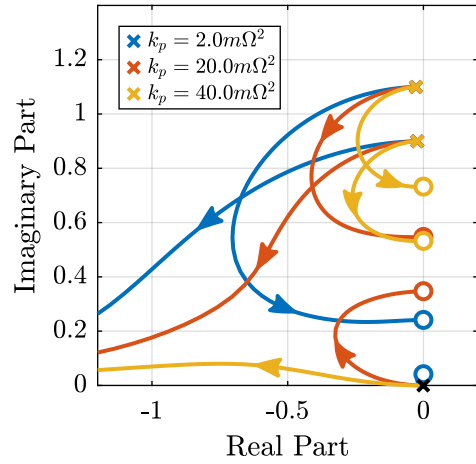


Figure 16: Comparison the Root Locus for three parallel stiffnesses k_p

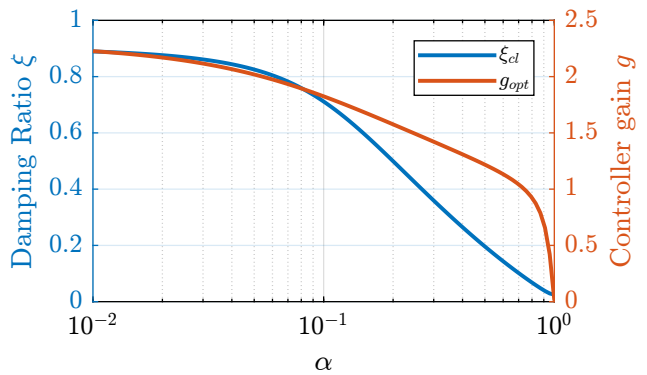


Figure 17: Optimal Damping Ratio ξ_{opt} and the corresponding optimal gain g_{opt} as a function of α

will differ when large control gains are used.

One can observe that the closed loop poles of the system with added springs (in red) are bounded to the left half plane implying unconditional stability. This is not the case for the system where the controller is augmented with an HPF (in blue).

It is interesting to note that the maximum added damping is very similar for both techniques and is reached for the same control gain $g_{opt} \approx 2\omega_0$.

The two proposed techniques are now compared in terms of closed-loop transmissibility and compliance.

The transmissibility is defined as the transfer function from the displacement of the rotating stage to the displacement of the payload. It is used to characterize how much vibration is transmitted through the suspended platform to the payload.

The compliance describes the displacement response of the payload to external forces applied to it. This is a useful metric when disturbances are directly applied to the payload.

The two techniques are also compared with passive damping (Figure 1) where the damping coefficient c

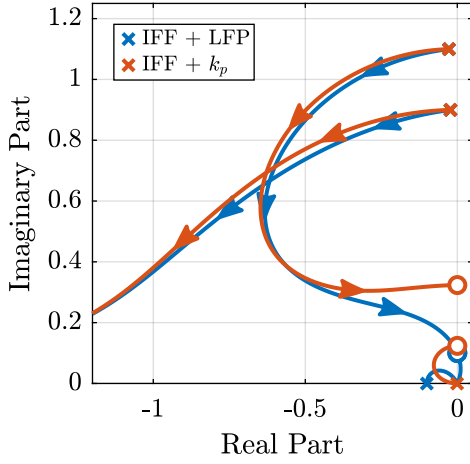


Figure 18: Root Locus for the two proposed modifications of decentralized IFF, $\Omega = 0.1\omega_0$

is tuned to critically damp the resonance when the rotating speed is null.

$$c_{\text{crit}} = 2\sqrt{km} \quad (24)$$

Very similar results are obtained for the two proposed IFF modifications in terms of transmissibility (Figure 19) and compliance (Figure 20). It is also confirmed that these two techniques can significantly damp the suspension modes.

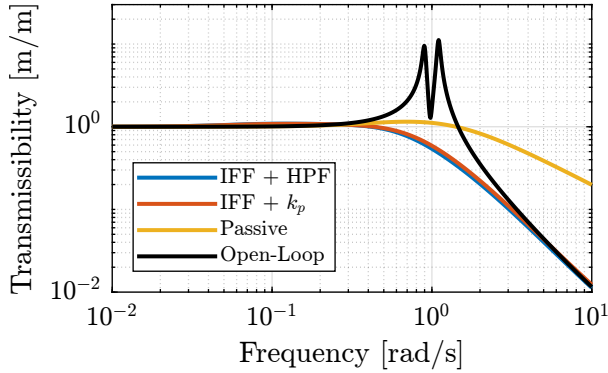


Figure 19: Comparison of the two proposed Active Damping Techniques - Transmissibility

On can see in Figure 19 that the problem of the degradation of the transmissibility at high frequency when using passive damping techniques is overcome by the use of IFF.

The addition of the HPF or the use of the parallel stiffness permit to limit the degradation of the compliance as compared with classical IFF (Figure 20).

7. Conclusion

Due to gyroscopic effects, decentralized IFF with pure integrators was shown to be unstable when applied to

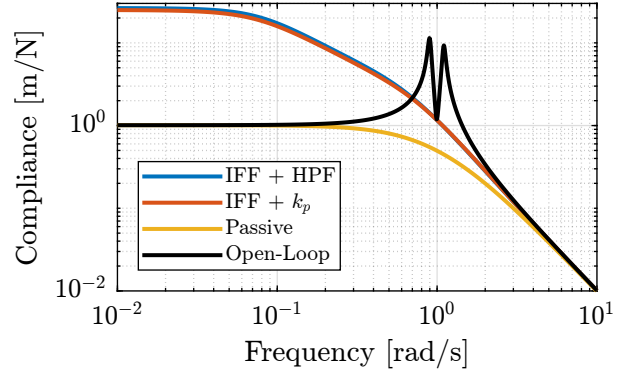


Figure 20: Comparison of the two proposed Active Damping Techniques - Compliance

rotating platforms. Two modifications of the classical IFF control have been proposed to overcome this issue.

The first modification concerns the controller and consists of adding an high pass filter to the pure integrators. This is equivalent as to moving the controller pole to the left along the real axis. This renders the closed loop system stable up to some value of the controller gain g_{max} .

The second proposed modification concerns the mechanical system. Additional springs are added in parallel with the actuators and force sensors. It was shown that if the stiffness k_p of the additional springs is larger than the negative stiffness $m\Omega^2$ induced by centrifugal forces, the classical decentralized IFF regains its unconditional stability property.

While having very different implementations, both proposed modifications are very similar when it comes to the attainable damping and the obtained closed loop system behavior.

Future work will focus on the experimental validation of the proposed active damping techniques.

The Matlab code that was used for this study is available under a MIT License and archived in Zenodo [8].

Acknowledgments

This research benefited from a FRIA grant from the French Community of Belgium.

References

- [1] Preumont A, Dufour J P and Malekian C 1992 *Journal of guidance, control, and dynamics* **15** 390–395
- [2] Preumont A, François A, Bossens F and Abu-Hanieh A 2002 *Journal of Sound and Vibration* **257** 605–613 URL <https://doi.org/10.1006/jsvi.2002.5047>
- [3] Preumont A, De Marneffe B and Krenk S 2008 *Journal of guidance, control, and dynamics* **31** 428–432

- [4] Skogestad S and Postlethwaite I 2007 *Multivariable Feedback Control: Analysis and Design* (John Wiley) ISBN 9780470011683
- [5] Preumont A, Dufour J P and Malekian C 1991 Active damping by a local force feedback with piezoelectric actuators *32nd Structures, Structural Dynamics, and Materials Conference* (American Institute of Aeronautics and Astronautics) URL <https://doi.org/10.2514/6.1991-989>
- [6] Souleille A, Lampert T, Lafarga V, Hellegouarch S, Rondineau A, Rodrigues G and Collette C 2018 *CEAS Space Journal* **10** 157–165
- [7] Preumont A 2018 *Vibration Control of Active Structures - Fourth Edition* Solid Mechanics and Its Applications (Springer International Publishing) URL <https://doi.org/10.1007/978-3-319-72296-2>
- [8] Dehaeze T 2020 Active damping of rotating positioning platforms Source Code on Zonodo URL <https://doi.org/10.5281/zenodo.3894342>